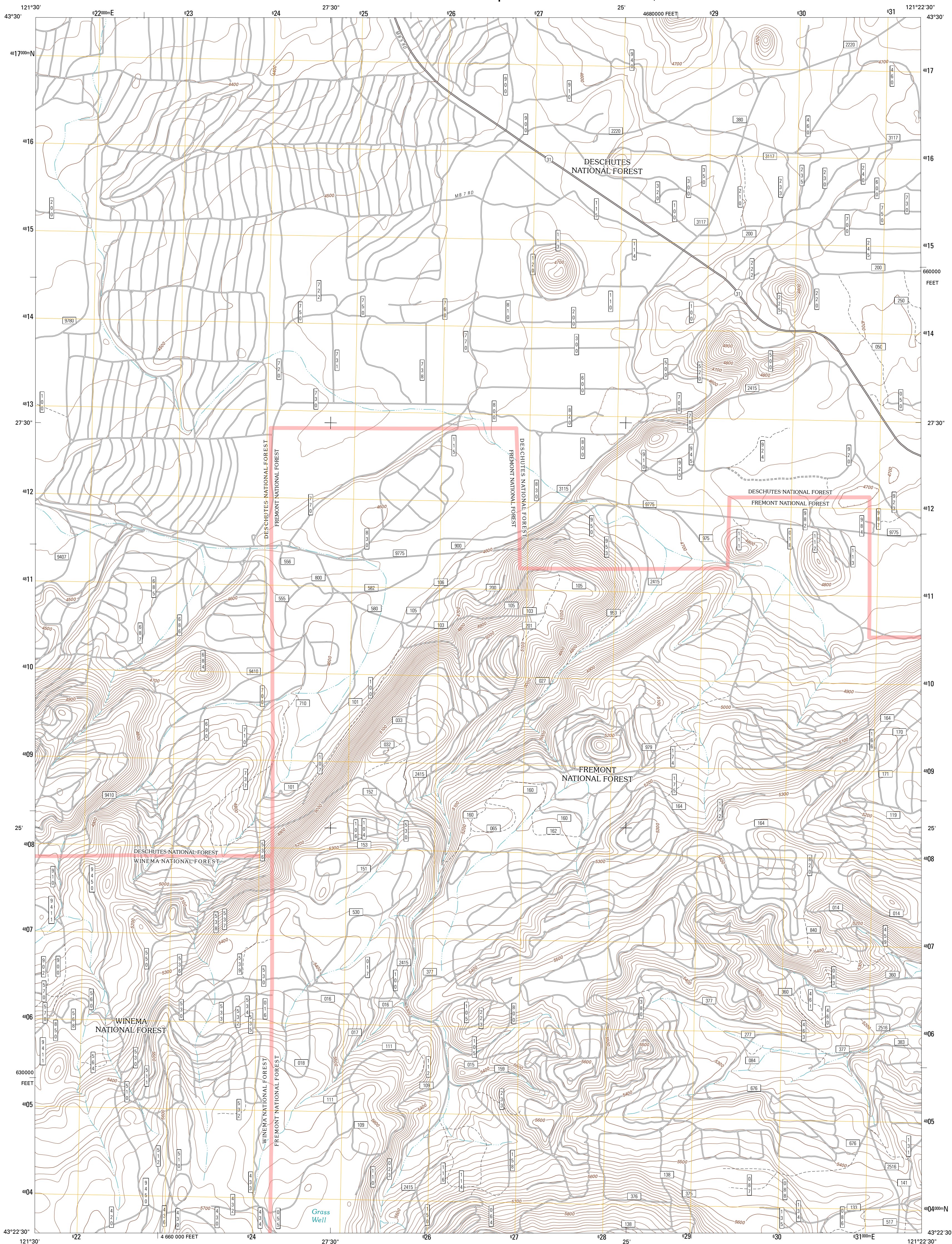




U.S. DEPARTMENT OF THE INTERIOR
U. S. GEOLOGICAL SURVEY

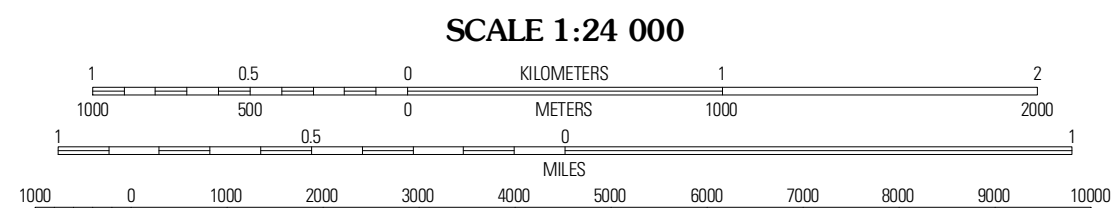
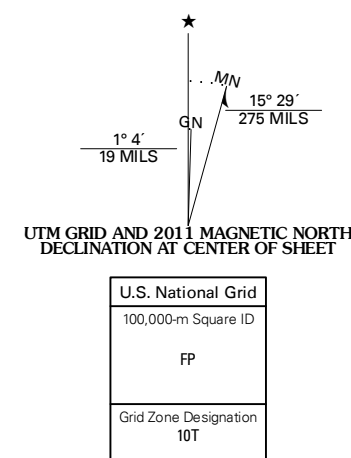


GRASS WELL QUADRANGLE
OREGON-KLAMATH CO.
7.5-MINUTE SERIES



Produced by the United States Geological Survey
North American Datum of 1983 (NAD83)
World Geodetic System of 1984 (WGS84). Projection and
1 000-meter grid: Universal Transverse Mercator, Zone 10T
10 000-foot ticks: Oregon Coordinate System of 1983 (south
zone)

Imagery: NAMP, July 2009
Roads: 22006-2010 Tele Atlas
Roads within US Forest Service Lands: FSTopo Data
with limited Forest Service updates, 2009
Names: GNIS, 2010
Hydrography: National Hydrography Dataset, 2009
Contours: National Elevation Dataset, 1999
Boundaries: Census, IBWC, IBC, USGS, 1972 - 2010



CONTOUR INTERVAL 20 FEET
NORTH AMERICAN VERTICAL DATUM OF 1988
This map was produced to conform with version 0.5.10
of the USGS US Topo Product Standard.
A metadata file associated with this product is draft version 0.5.16



Masten Butte	Moffitt Butte	Spring Butte
Crescent NE	Grass Well	Big Hole
Sellers Marsh	Stams Mountain	Wickup Spring

ROAD CLASSIFICATION
Interstate Route State Route
US Route Local Road
Ramp 4WD
 Interstate Route US Route
 FS Primary Route FS Passenger Route
 State Route FS High Clearance Route
Check with local Forest Service unit
for current travel conditions and restrictions.

GRASS WELL, OR
2011