

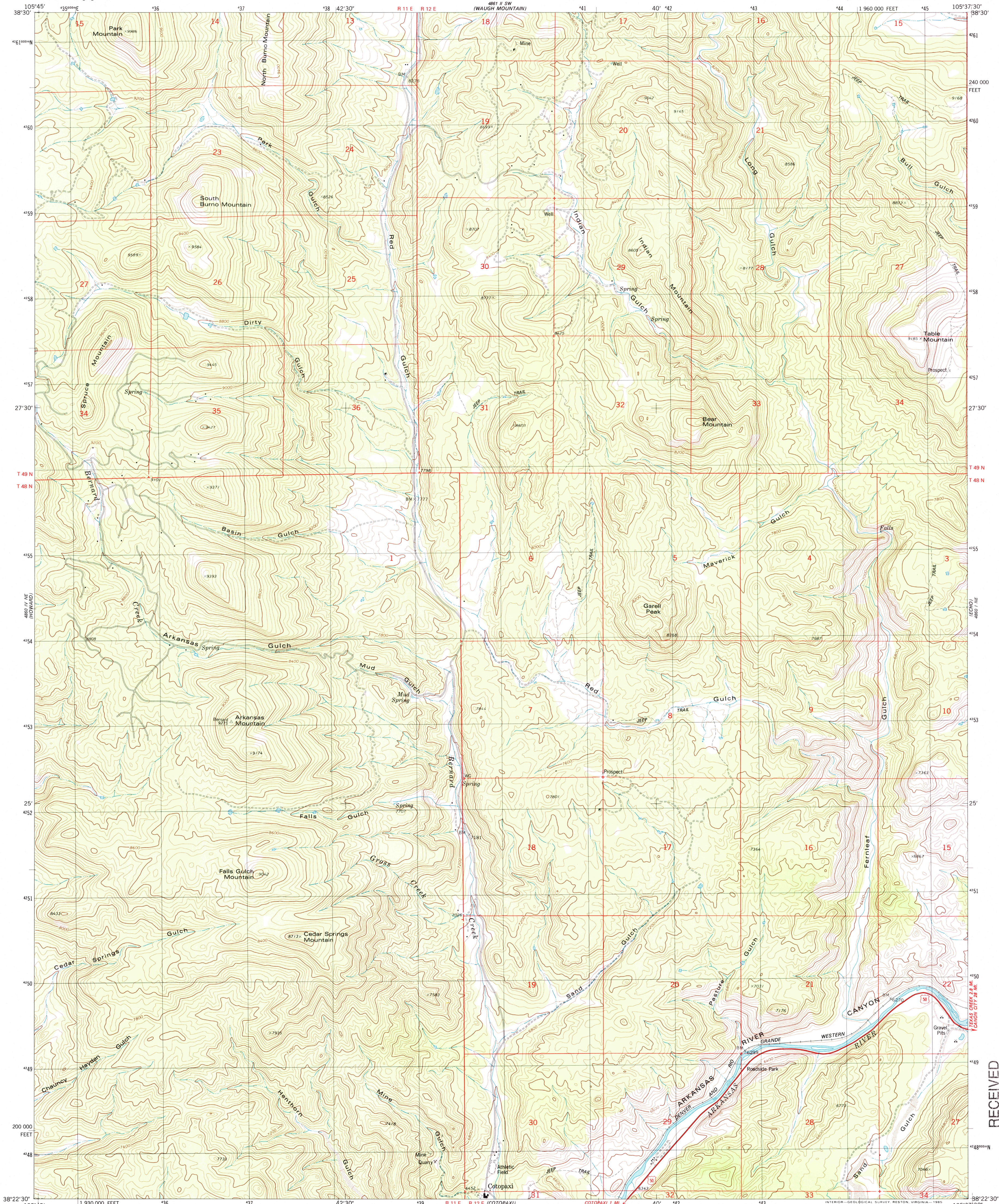
889 11 SE  
HALL GULCH



U.S. DEPARTMENT OF THE INTERIOR  
U.S. GEOLOGICAL SURVEY

ARKANSAS MOUNTAIN QUADRANGLE  
COLORADO-FREMONT CO.  
7.5 MINUTE SERIES (TOPOGRAPHIC)  
NW/4 COTOPAXI 15' QUADRANGLE

889 11 SE  
HALL GULCH



(COMPALE)  
889 11 SE

Mapped, edited, and published by the Geological Survey

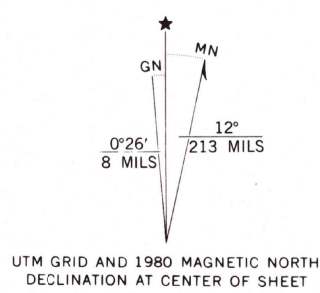
Control by USGS and NOS/NOAA

Topography by photogrammetric methods from aerial photographs  
taken 1975. Field checked 1976. Map edited 1980

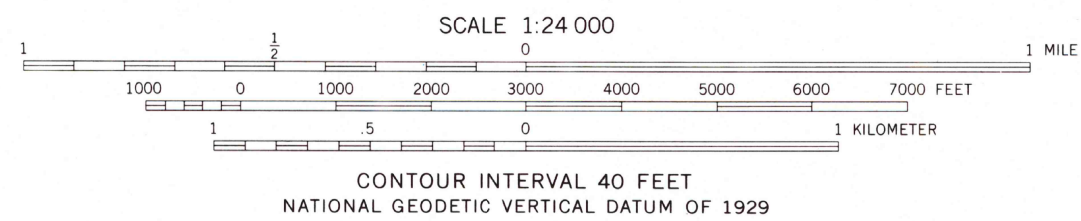
Projection and 10,000-foot grid ticks: Colorado  
coordinate system, central zone (Lambert conformal conic)  
1000-meter Universal Transverse Mercator grid, zone 13  
1927 North American Datum

To place on the predicted North American Datum 1983  
move the projection lines 4 meters north and  
50 meters east as shown by dashed corner ticks

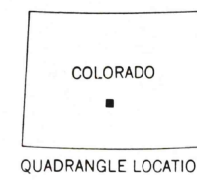
Certain land lines are omitted because of insufficient data



UTM GRID and 1980 MAGNETIC NORTH  
DECLINATION AT CENTER OF SHEET



CONTOUR INTERVAL 40 FEET  
NATIONAL GEODETIC VERTICAL DATUM OF 1929



QUADRANGLE LOCATION

ROAD CLASSIFICATION	
Primary highway, hard surface	Light-duty road, hard or improved surface
Secondary highway, hard surface	Unimproved road
Interstate Route	U. S. Route
	State Route

ARKANSAS MOUNTAIN, COLO.  
NW/4 COTOPAXI 15' QUADRANGLE  
38105-D6-TF-024  
1980

DMA 4860 1 NW-SERIES V877

RECEIVED

JAN 3 1 2008

USGS NWLD  
HISTORICAL MAP ARCHIVES

(COMPALE)  
889 11 SE

UTM GRID and 1980 MAGNETIC NORTH  
DECLINATION AT CENTER OF SHEET

DMA 4860 1 NW-SERIES V877

UTM GRID and 1980 MAGNETIC NORTH  
DECLINATION AT CENTER OF SHEET

DMA 4860 1 NW-SERIES V877