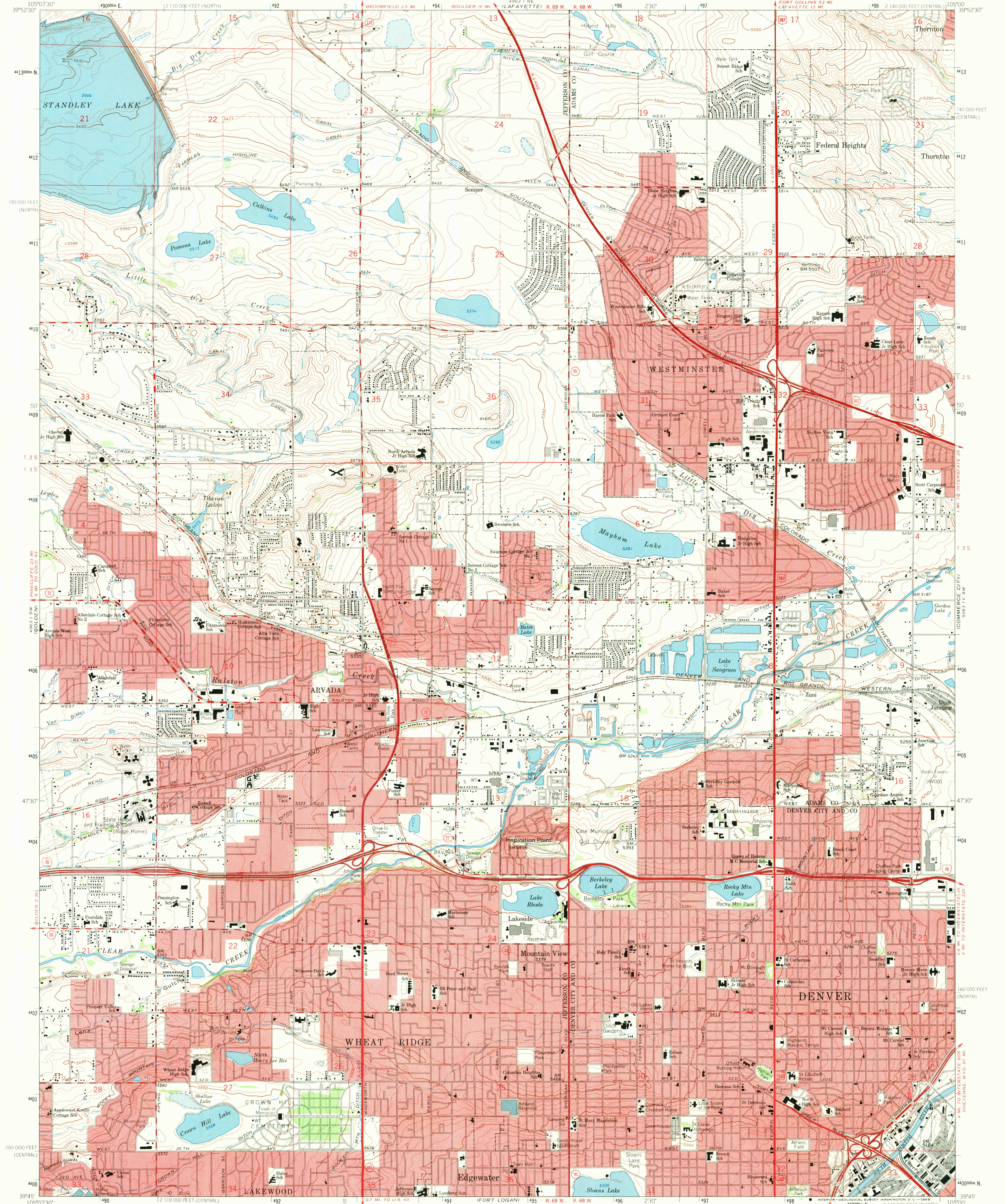


UNITED STATES
DEPARTMENT OF THE INTERIOR
GEOLOGICAL SURVEY

ARVADA QUADRANGLE
COLORADO
7.5 MINUTE SERIES (TOPOGRAPHIC)



Mapped, edited, and published by the Geological Survey

Control by USGS and USC&GS

Topography by photogrammetric methods from aerial photographs
taken 1964. Field checked 1965. Supersedes map dated 1957

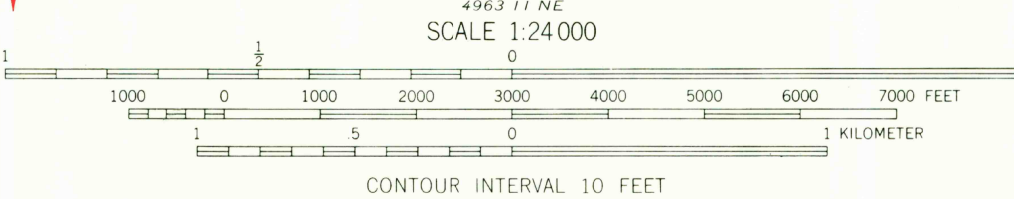
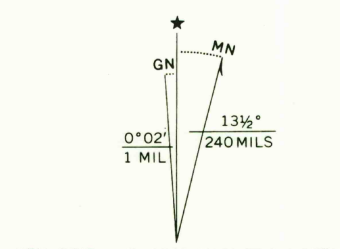
Polycyclic projection, 1927 North American datum
10,000-foot grids based on Colorado coordinate system, central
and north zones

1000-meter Universal Transverse Mercator grid ticks,
zone 13, shown in blue

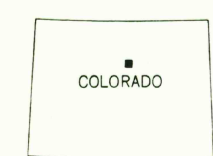
Red tint indicates areas in which only landmark buildings are shown

Fine red dashed lines indicate selected fence lines

This map does not reflect ground conditions
resulting from flood of June 1965



USGS
Historical File
Topographic Division



ROAD CLASSIFICATION
Heavy-duty ——— Light-duty ———
Medium-duty ——— Unimproved dirt ———
Interstate Route ——— U.S. Route ——— State Route ———

U.S.G.S.
FILE COPY ARVADA, COLO.
TOPOGRAPHIC DIVISION N3945-W10500/7.5
1965

AMS 4963 1 SE-SERIES V877

APR 9 1969
13 380