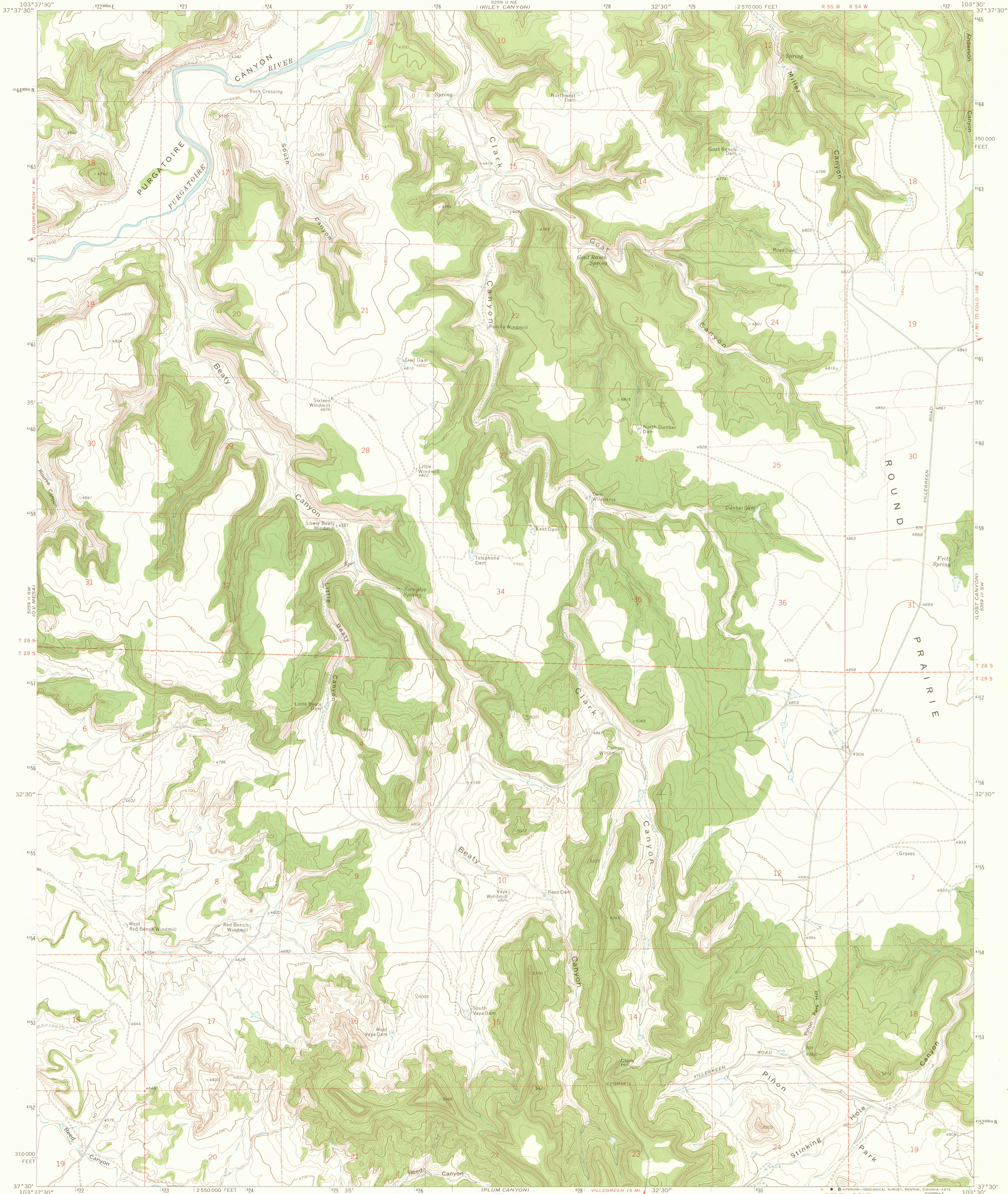


5259 II NW
(PACIFIC GAP)

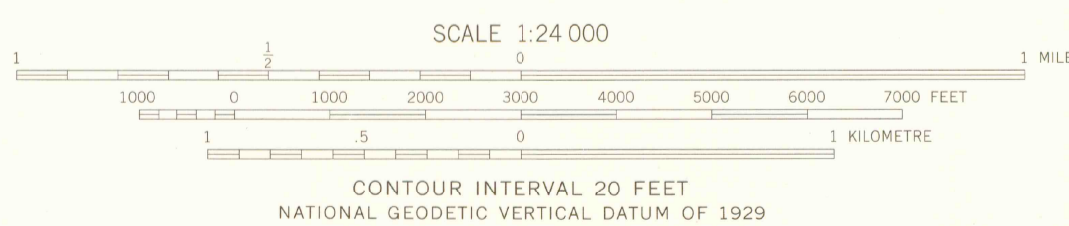
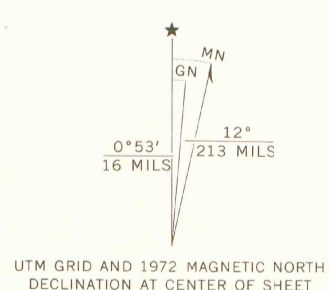
UNITED STATES
DEPARTMENT OF THE INTERIOR
GEOLOGICAL SURVEY

BEATY CANYON QUADRANGLE
COLORADO—LAS ANIMAS CO.
7.5 MINUTE SERIES (TOPOGRAPHIC)

5259 II NW
(CORBIN CANYON)



Mapped, edited, and published by the Geological Survey
Control by USGS and NOS/NOAA
Topography by photogrammetric methods from aerial
photographs taken 1971. Field checked 1972
Projection and 10,000-foot grid ticks: Colorado
coordinate system, south zone (Lambert conformal conic)
1000-metre Universal Transverse Mercator grid ticks,
zone 13, shown in blue. 1927 North American datum
Fine red dashed lines indicate selected fence lines



ROAD CLASSIFICATION
Primary highway, hard surface ——— Light-duty road, hard or improved surface
Secondary highway, hard surface ——— Unimproved road
Interstate Route ——— U. S. Route ——— State Route

BEATY CANYON, COLO.
N3730—W10330/7.5

1972

AMS 5259 II SE—SERIES V877

THIS MAP COMPLIES WITH NATIONAL MAP ACCURACY STANDARDS
FOR SALE BY U.S. GEOLOGICAL SURVEY, DENVER, COLORADO 80225, OR RESTON, VIRGINIA 22092
A FOLDER DESCRIBING TOPOGRAPHIC MAPS AND SYMBOLS IS AVAILABLE ON REQUEST

OFFICE COPY

LIBRARY USE ONLY