

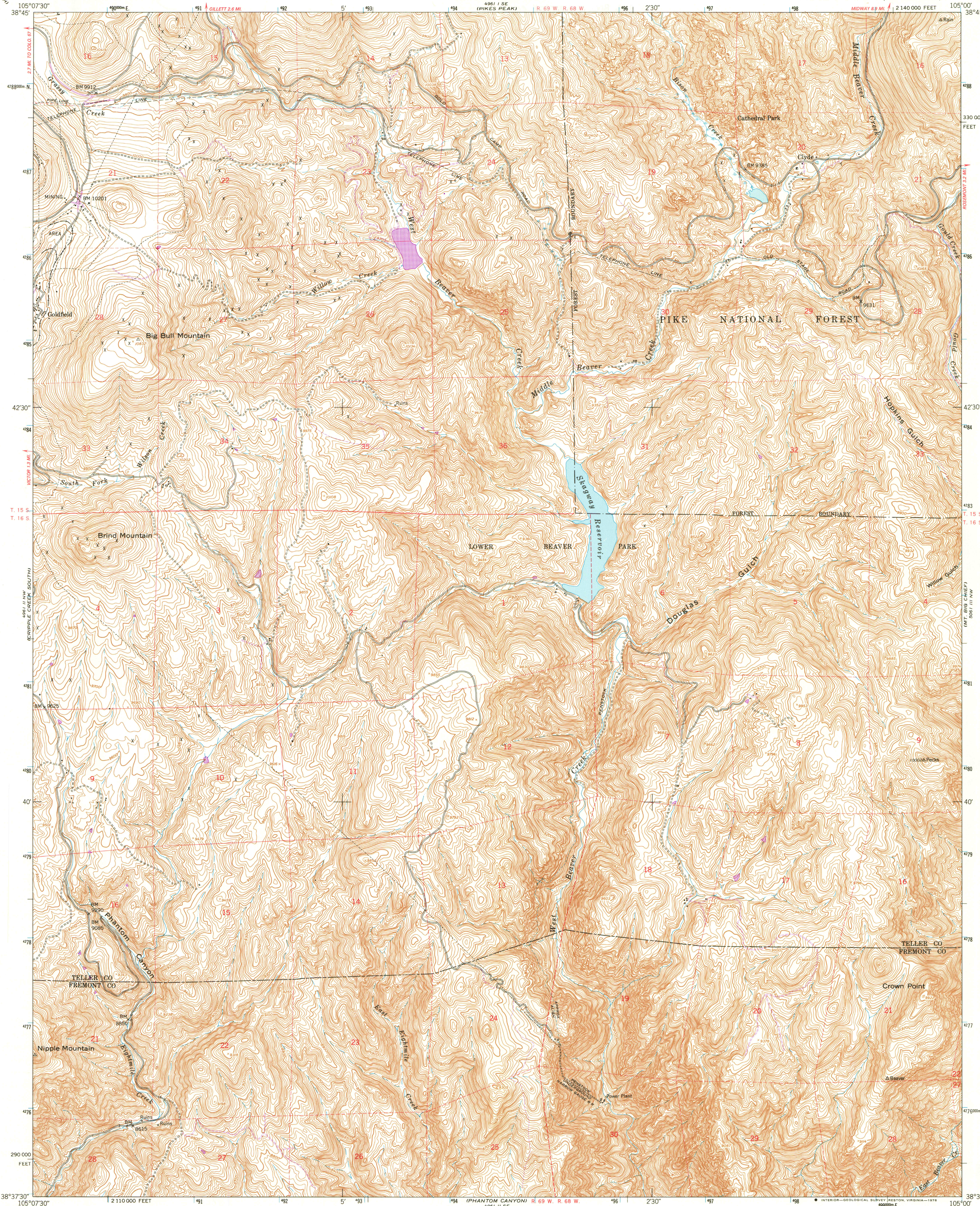
UNITED STATES
DEPARTMENT OF THE INTERIOR
GEOLOGICAL SURVEY

UNITED STATES
DEPARTMENT OF THE ARMY
CORPS OF ENGINEERS

BIG BULL MOUNTAIN QUADRANGLE
COLORADO
7.5 MINUTE SERIES (TOPOGRAPHIC)

GEOLOGY

GEOLOGY

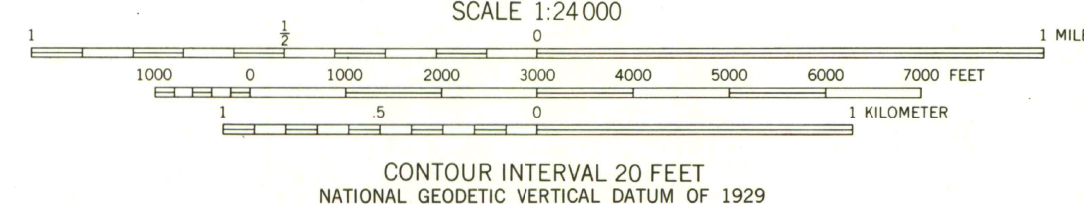
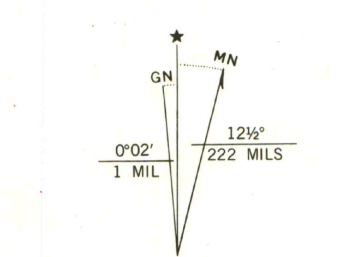


Map by the Army Map Service
Published for civil use by the Geological Survey

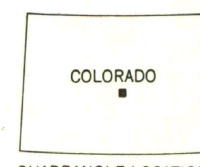
Control by USGS, NOS/NOAA, and USCE
Topography from aerial photographs by multiplex methods
Aerial photographs taken 1950. Field check 1951

Polyconic projection. 1927 North American datum
10,000-foot grid based on Colorado coordinate system,
central zone

Dashed land lines indicate approximate locations
Unchecked elevations are shown in brown
Locations of all boundaries are approximate
1000-meter Universal Transverse Mercator grid ticks,
zone 13, shown in blue



THIS MAP COMPLIES WITH NATIONAL MAP ACCURACY STANDARDS
FOR SALE BY U. S. GEOLOGICAL SURVEY, DENVER, COLORADO 80225, OR RESTON, VIRGINIA 22092
A FOLDER DESCRIBING TOPOGRAPHIC MAPS AND SYMBOLS IS AVAILABLE ON REQUEST



ROAD CLASSIFICATION
Heavy-duty 4 LANE 6 LANE Light-duty 2 LANE 4 LANE
Medium-duty 2 LANE 4 LANE Unimproved dirt
U. S. Route State Route

TOPO CO 24000
BIG BULL MOUNTAIN, COLO.
N 3837.5-W 10500/7.5

1951
PHOTOREVISED 1975
AMS 4961 II NE-SERIES V877