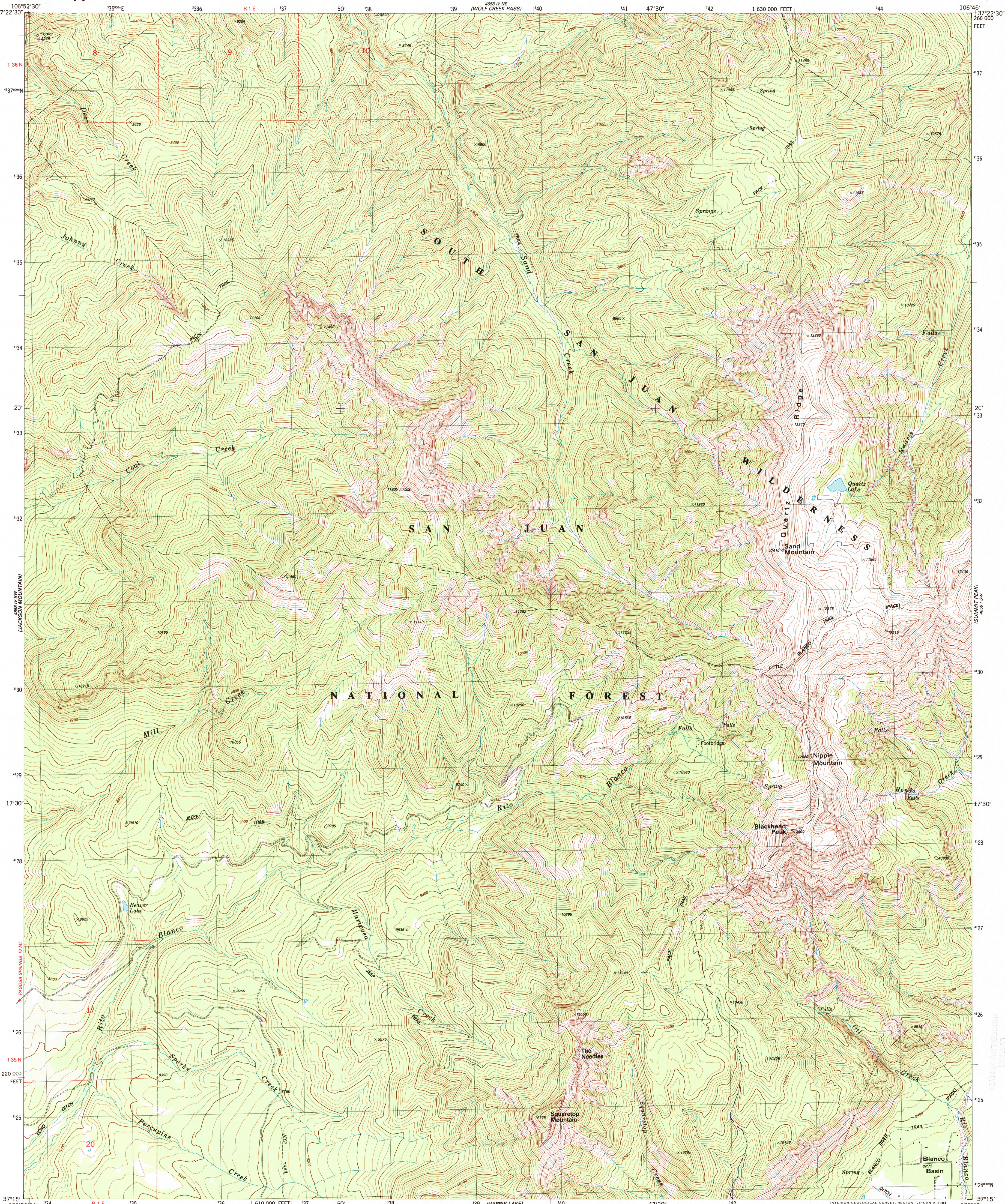




U.S. DEPARTMENT OF THE INTERIOR  
U.S. GEOLOGICAL SURVEY

BLACKHEAD PEAK QUADRANGLE  
COLORADO-ARCHULETA CO.  
7.5 MINUTE SERIES (TOPOGRAPHIC)  
SE/4 WOLF CREEK PASS 15' QUADRANGLE



Mapped, edited, and published by the Geological Survey

Control by USGS and NOS/NOAA

Topography by photogrammetric methods from aerial photographs taken 1977. Field checked 1978. Map edited 1984

Projection and 10,000-foot grid ticks: Colorado coordinate system, south zone (Lambert conformal conic)

1000-meter Universal Transverse Mercator grid, zone 13

1927 North American Datum

To place on the predicted North American Datum 1983

move the projection lines 2 meters north and

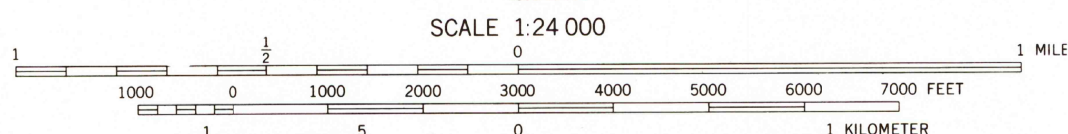
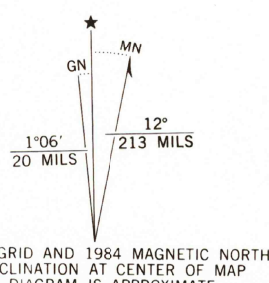
53 meters east as shown by dashed corner ticks

Where omitted, land lines have not been established or are

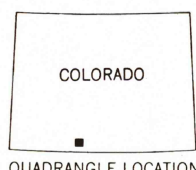
not shown because of insufficient data

There may be private inholdings within the boundaries of

the National or State reservations shown on this map



CONTOUR INTERVAL 40 FEET  
NATIONAL GEODETIC VERTICAL DATUM OF 1929



ROAD CLASSIFICATION	
Primary highway, hard surface	Light-duty road, hard or improved surface
Secondary highway, hard surface	Unimproved road
Interstate Route	U. S. Route
	State Route

BLACKHEAD PEAK, COLO.  
SE/4 WOLF CREEK PASS 15' QUADRANGLE  
37106-C7-TF-024

1984

DMA 4658 IV SE-SERIES V877

RECEIVED  
DEC 31 1993  
UNITED STATES GEOLOGICAL SURVEY  
WASHINGTON, D.C. 20508



6132601