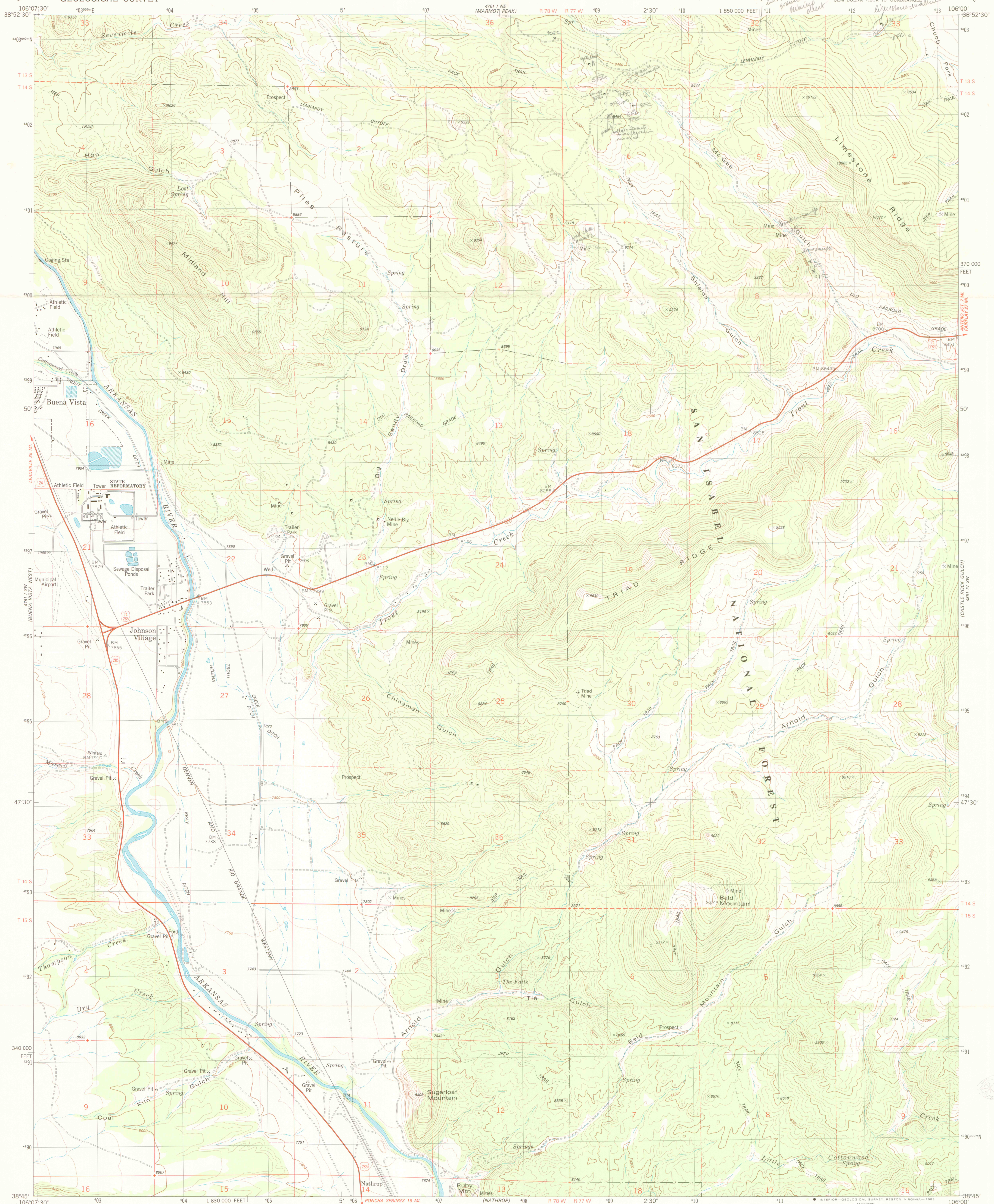
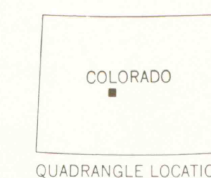
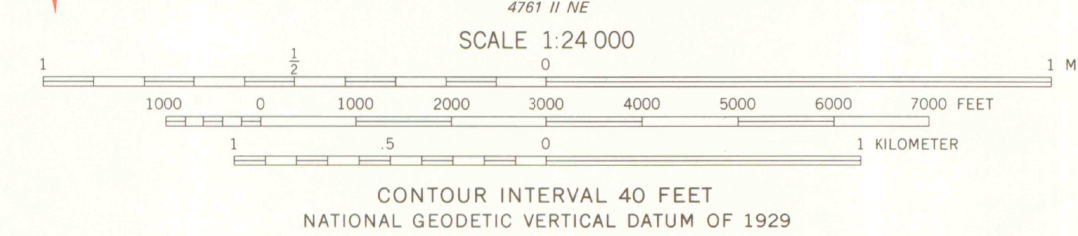
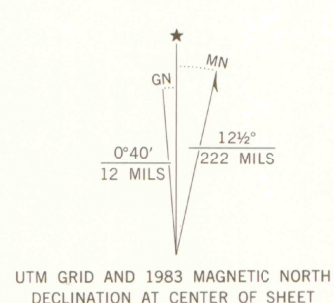


UNITED STATES  
DEPARTMENT OF THE INTERIOR  
GEOLOGICAL SURVEY

BUENA VISTA EAST QUADRANGLE  
COLORADO—CHAFFEE CO.  
7.5 MINUTE SERIES (TOPOGRAPHIC)



Mapped, edited, and published by the Geological Survey  
Control by USGS and NOS/NOAA  
Topography by photogrammetric methods from aerial photographs  
taken 1975. Field checked 1976. Map edited 1983  
Projection and 10,000-foot grid ticks: Colorado  
coordinate system, central zone (Lambert conformal conic)  
1000-meter Universal Transverse Mercator grid, zone 13  
1927 North American datum  
To place on the predicted North American Datum 1983  
move the projection lines 4 meters north and  
50 meters east as shown by dashed corner ticks  
Fine red dashed lines indicate selected fence lines  
Certain land lines are omitted because of insufficient data  
There may be private inholdings within the boundaries of  
the National or State reservations shown on this map



ROAD CLASSIFICATION  
Primary highway, hard surface  
Secondary highway, hard surface  
Unimproved road  
Interstate Route  
U. S. Route  
State Route  
Light-duty road, hard or improved surface  
Unimproved road  
Interstate Route  
U. S. Route  
State Route

BUENA VISTA EAST, COLO.  
SE 1/4 BUENA VISTA 15' QUADRANGLE  
N3845-W10600/7.5

1983  
DMA 4761 I SE-SERIES V877

MOUNTAIN MAPS  
7545 W. Hwy. 50  
P.O. Box 837  
Salida, CO 81201

LIGHT