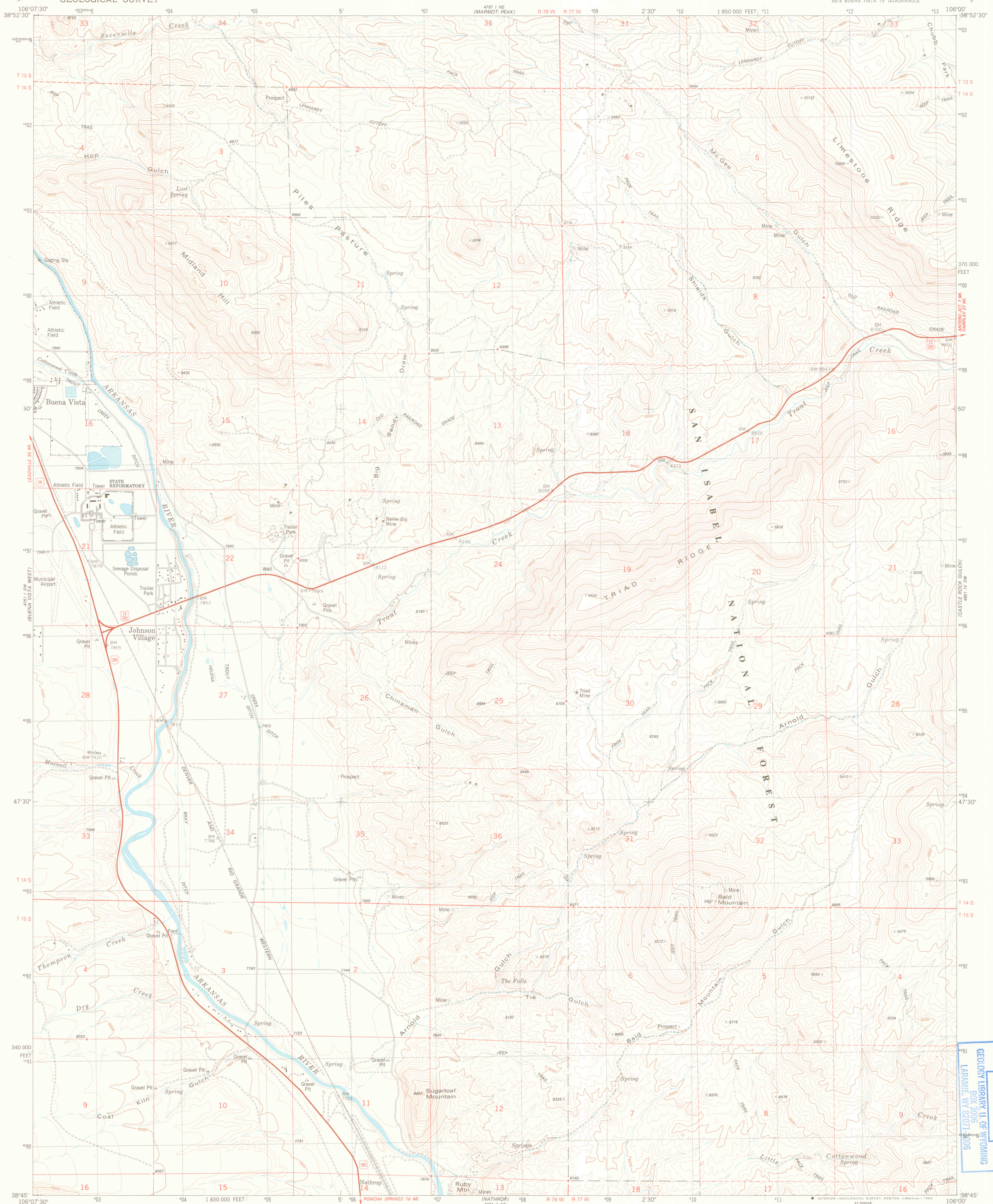


UNITED STATES
DEPARTMENT OF THE INTERIOR
GEOLOGICAL SURVEY

BUENA VISTA EAST QUADRANGLE
COLORADO-CHAFFEE CO.
7.5 MINUTE SERIES (TOPOGRAPHIC)
SE/4 BUENA VISTA 15' QUADRANGLE

GEOLOGY



Mapped, edited, and published by the Geological Survey

Control by USGS and NOS/NOAA

Topography by photogrammetric methods from aerial photographs
taken 1975. Field checked 1976. Map edited 1983

Projection and 10,000-foot grid ticks: Colorado
coordinate system, central zone (Lambert conformal conic)

1000-meter Universal Transverse Mercator grid, zone 13

1927 North American datum

To place on the predicted North American Datum 1983

move the projection lines 4 meters north and

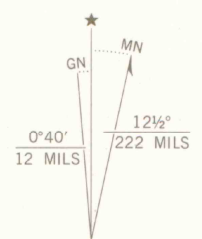
50 meters east as shown by dashed corner ticks

Fine red dashed lines indicate selected fence lines

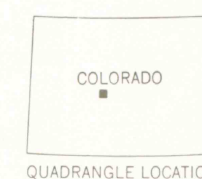
Certain land lines are omitted because of insufficient data

There may be private inholdings within the boundaries of

the National or State reservations shown on this map



SCALE 1:24 000
1 0000 0 1000 2000 3000 4000 5000 6000 7000 FEET
1 MILE
1 0 1 2 3 4 5 6 7 8 9 10 KILOMETER
CONTOUR INTERVAL 40 FEET
NATIONAL GEODETIC VERTICAL DATUM OF 1929



ROAD CLASSIFICATION
Primary highway, hard surface
Secondary highway, hard surface
Unimproved road
Light-duty road, hard or improved surface
Interstate Route
U. S. Route
State Route

GEOLOGICAL SURVEY OF WYOMING
BUENA VISTA EAST, COLO.
SE/4 BUENA VISTA 15' QUADRANGLE
N3845-W10600/7.5

1983

DMA 4761 | SE-SERIES V877
TOPO CO 24000

DEPOSITORY
- 2002
GEOLOGY LIBRARY U. OF WYOMING
BOX 3008
LARAMIE, WY 82021-0008

GEOLOGY