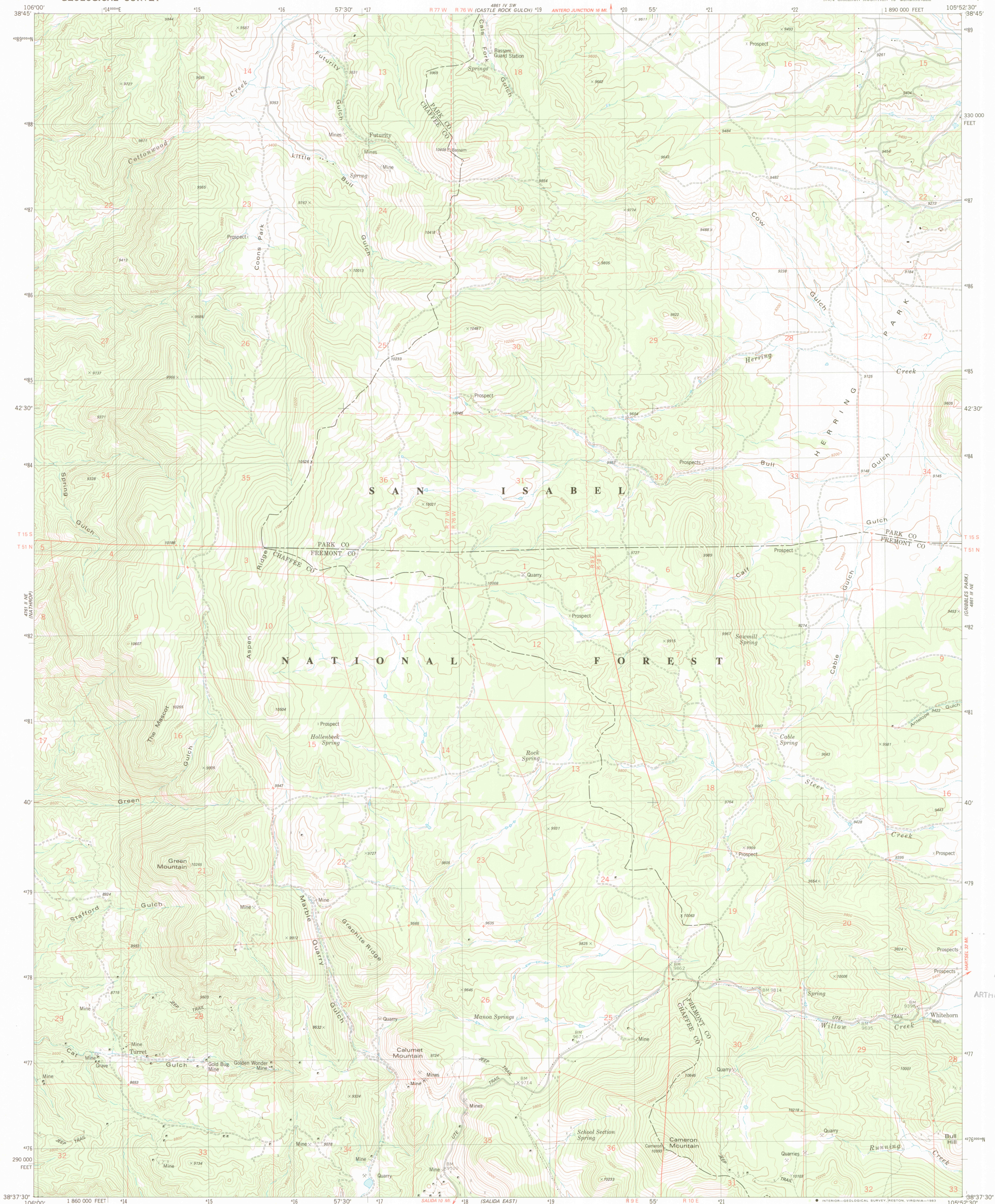


160° 00' W
150° 00' W
140° 00' W
130° 00' W
120° 00' W
110° 00' W
100° 00' W
90° 00' W
80° 00' W
70° 00' W
60° 00' W
50° 00' W
40° 00' W
30° 00' W
20° 00' W
10° 00' W
0° 00' W
10° 00' E
20° 00' E
30° 00' E
40° 00' E
50° 00' E
60° 00' E
70° 00' E
80° 00' E
90° 00' E
100° 00' E
110° 00' E
120° 00' E
130° 00' E
140° 00' E
150° 00' E
160° 00' E

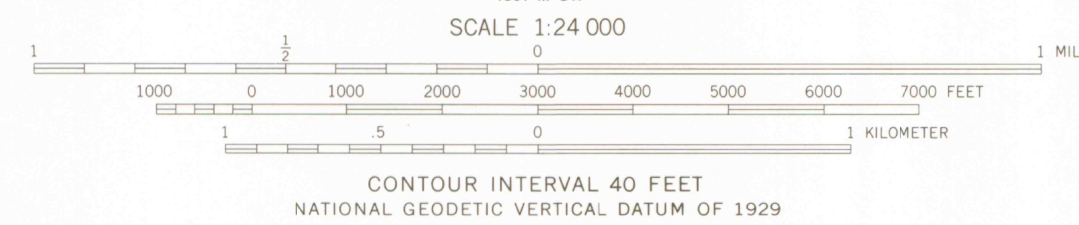
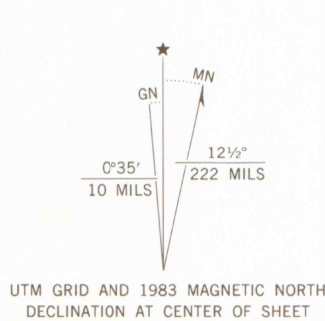
UNITED STATES
DEPARTMENT OF THE INTERIOR
GEOLOGICAL SURVEY

CAMERON MOUNTAIN QUADRANGLE
COLORADO
7.5 MINUTE SERIES (TOPOGRAPHIC)
NW/4 CAMERON MOUNTAIN 15' QUADRANGLE

160° 00' W
150° 00' W
140° 00' W
130° 00' W
120° 00' W
110° 00' W
100° 00' W
90° 00' W
80° 00' W
70° 00' W
60° 00' W
50° 00' W
40° 00' W
30° 00' W
20° 00' W
10° 00' W
0° 00' W
10° 00' E
20° 00' E
30° 00' E
40° 00' E
50° 00' E
60° 00' E
70° 00' E
80° 00' E
90° 00' E
100° 00' E
110° 00' E
120° 00' E
130° 00' E
140° 00' E
150° 00' E
160° 00' E



Maped, edited, and published by the Geological Survey
Control by USGS and NOS/NOAA
Topography by photogrammetric methods from aerial photographs
taken 1975. Field checked 1976. Map edited 1983
Projection and 10,000-foot grid ticks: Colorado
coordinate system, central zone (Lambert conformal conic)
1000-meter Universal Transverse Mercator grid, zone 13
1927 North American datum
To place on the predicted North American Datum 1983
move the projection lines 4 meters north and
50 meters east as shown by dashed corner ticks
Fine red dashed lines indicate selected fence lines
There may be private inholdings within the boundaries of
the National or State reservations shown on this map



ROAD CLASSIFICATION
Primary highway, hard surface
Secondary highway, hard surface
Unimproved road
Light-duty road, hard or improved surface
U. S. Route
State Route

CAMERON MOUNTAIN, COLO.
NW/4 CAMERON MOUNTAIN 15' QUADRANGLE
N3837.5-W10552.5/7.5

1983
DMA 4861 III NW-SERIES V877

APR 27 1984
MAP ROOM
ARTHUR LAKES LIBRARY

LIBRARY USE ONLY
C222
s24
U5