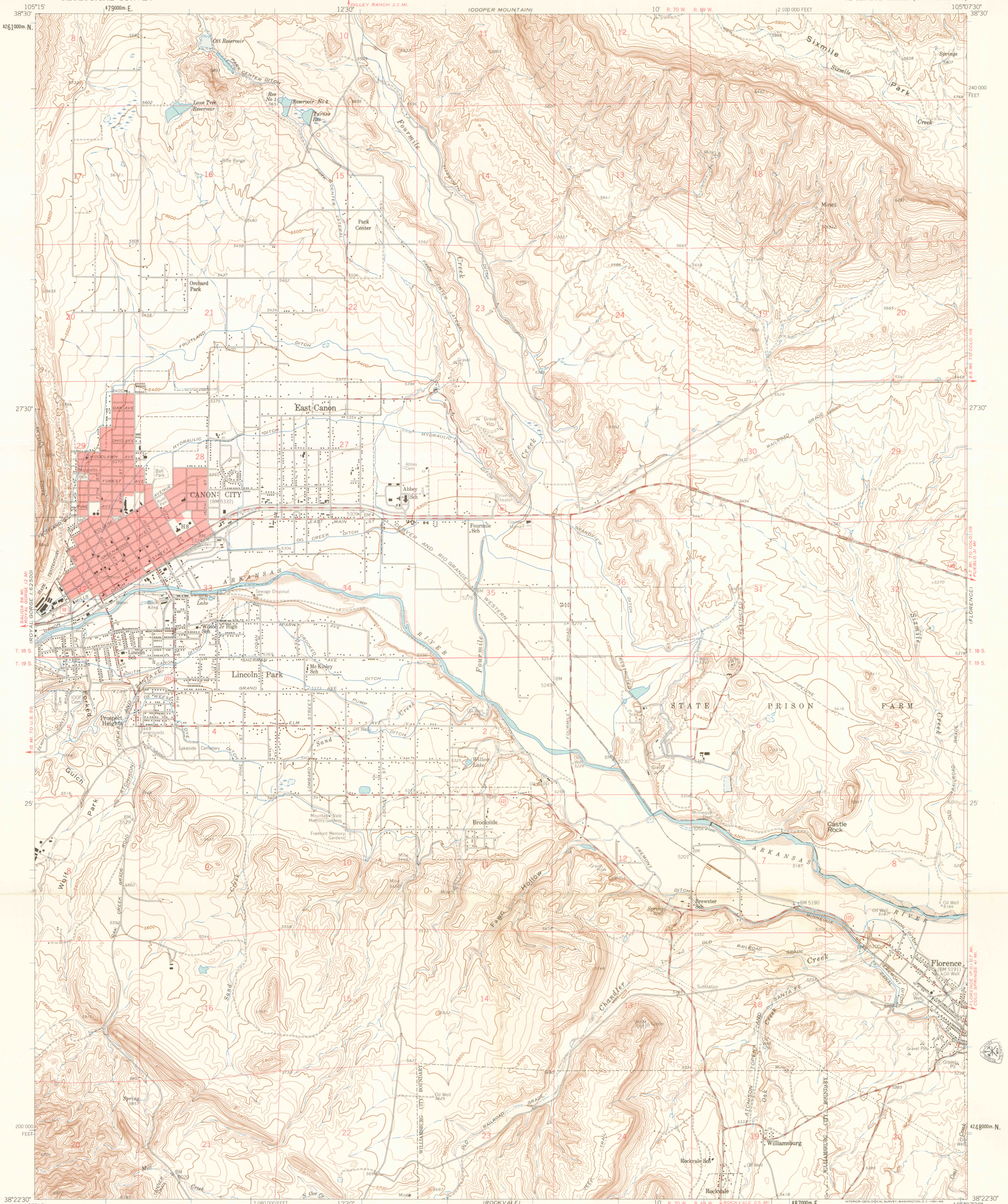
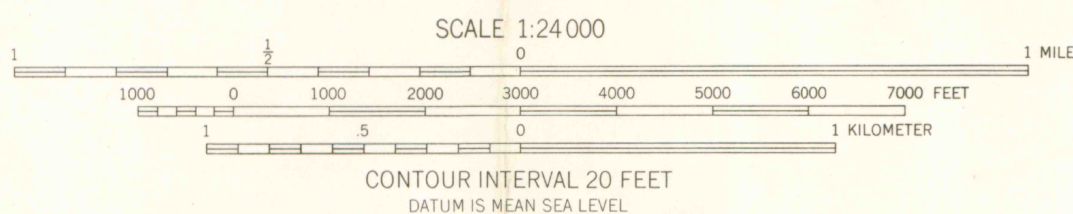


UNITED STATES
DEPARTMENT OF THE INTERIOR
GEOLOGICAL SURVEY

CANON CITY QUADRANGLE
COLORADO-FREMONT CO.
7.5 MINUTE SERIES (TOPOGRAPHIC)



Mapped, edited, and published by the Geological Survey
Control by USGS and USC&GS
Topography from aerial photographs by photogrammetric methods
Aerial photographs taken 1954. Field check 1959
Polyconic projection. 1927 North American datum
10,000-foot grid based on Colorado coordinate system,
central zone.
1000-meter Universal Transverse Mercator grid ticks,
zone 13, shown in blue
Fine red dashed lines indicate selected fence and field lines
visible on aerial photographs. This information is unchecked
Red tint indicates area in which only
landmark buildings are shown



ROAD CLASSIFICATION
Medium-duty ——— Light-duty ———
Unimproved dirt ———
U.S. Route ——— State Route ———

DEPT. OF GEOLOGY
COLO. SCHOOL MINES
Working Collection

CANON CITY, COLO.
N3822.5-W10507.5/7.5
1959

OFFICE COPY
LIBRARY USE ONLY

G 3700
s24
.G4
MAP ROOM

FEB 19 2002

MAP ROOM
ARTHUR LAKES LIBRARY
COLORADO SCHOOL OF MINES