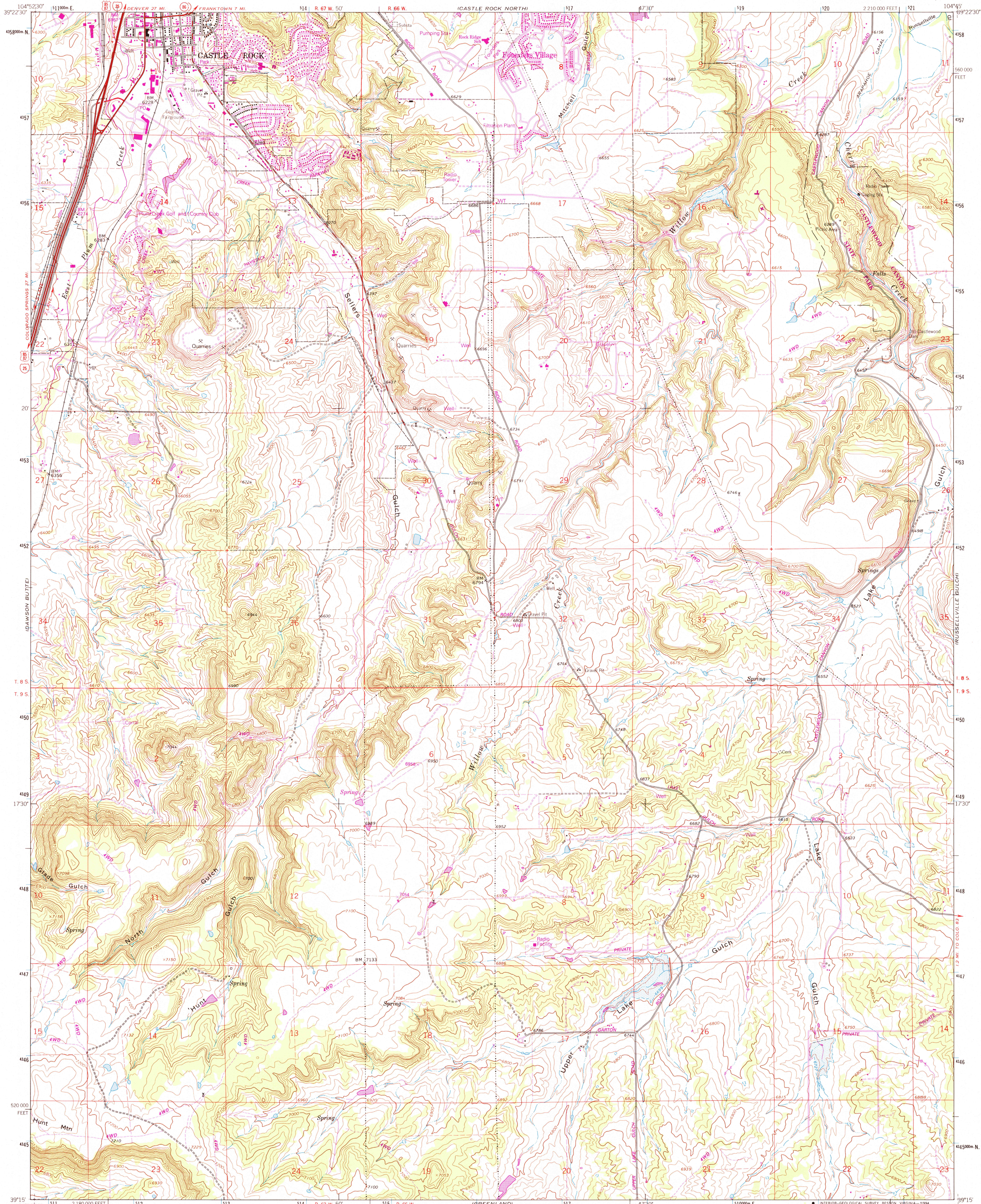


UNITED STATES
DEPARTMENT OF THE INTERIOR
GEOLOGICAL SURVEY

CASTLE ROCK SOUTH QUADRANGLE
COLORADO-DOUGLAS CO.
7.5 MINUTE SERIES (TOPOGRAPHIC)



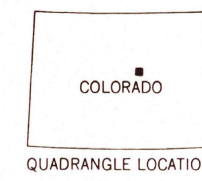
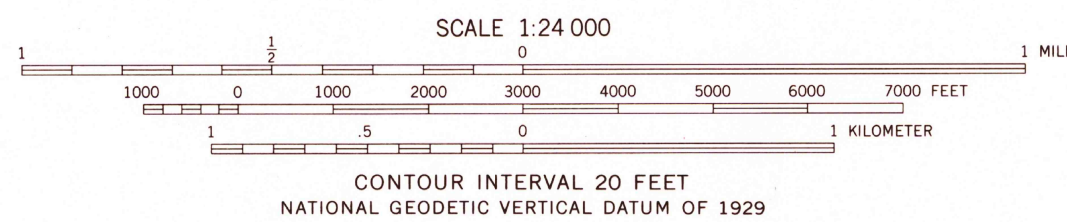
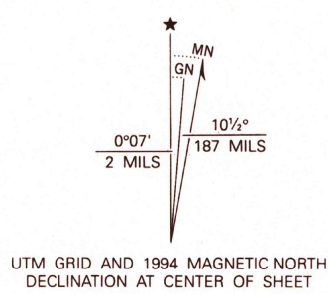
Produced by the United States Geological Survey in cooperation with the Inter-County Planning Commission
Control by USGS and NOS/NOAA

Compiled from aerial photographs taken 1964. Revisions shown in purple compiled from aerial photographs taken 1988 and other sources and have been field checked. Map edited 1994. Conflicts may exist between some updated features and previously mapped contours.

North American Datum of 1927 (NAD 27). Projection and 1000-foot ticks: Colorado Coordinate System, central zone (Lambert Conformal Conic).
Blue 1000-meter Universal Transverse Mercator ticks, zone 13

North American Datum of 1983 (NAD 83) is shown by dashed corner ticks. The values of the shift between NAD 27 and NAD 83 for 7.5-minute intersections are obtainable from National Geodetic Survey NADCON software.

There may be private inholdings within the boundaries of the National or State reservations shown on this map.



ROAD CLASSIFICATION	
Heavy duty	Light duty
Medium-duty	Unimproved dirt
Interstate Route	U.S. Route
	State Route

CASTLE ROCK SOUTH, COLO.
39104-C7-TF-024

1965
REVISED 1994
DMA 5062 IV SE-SERIES V877

