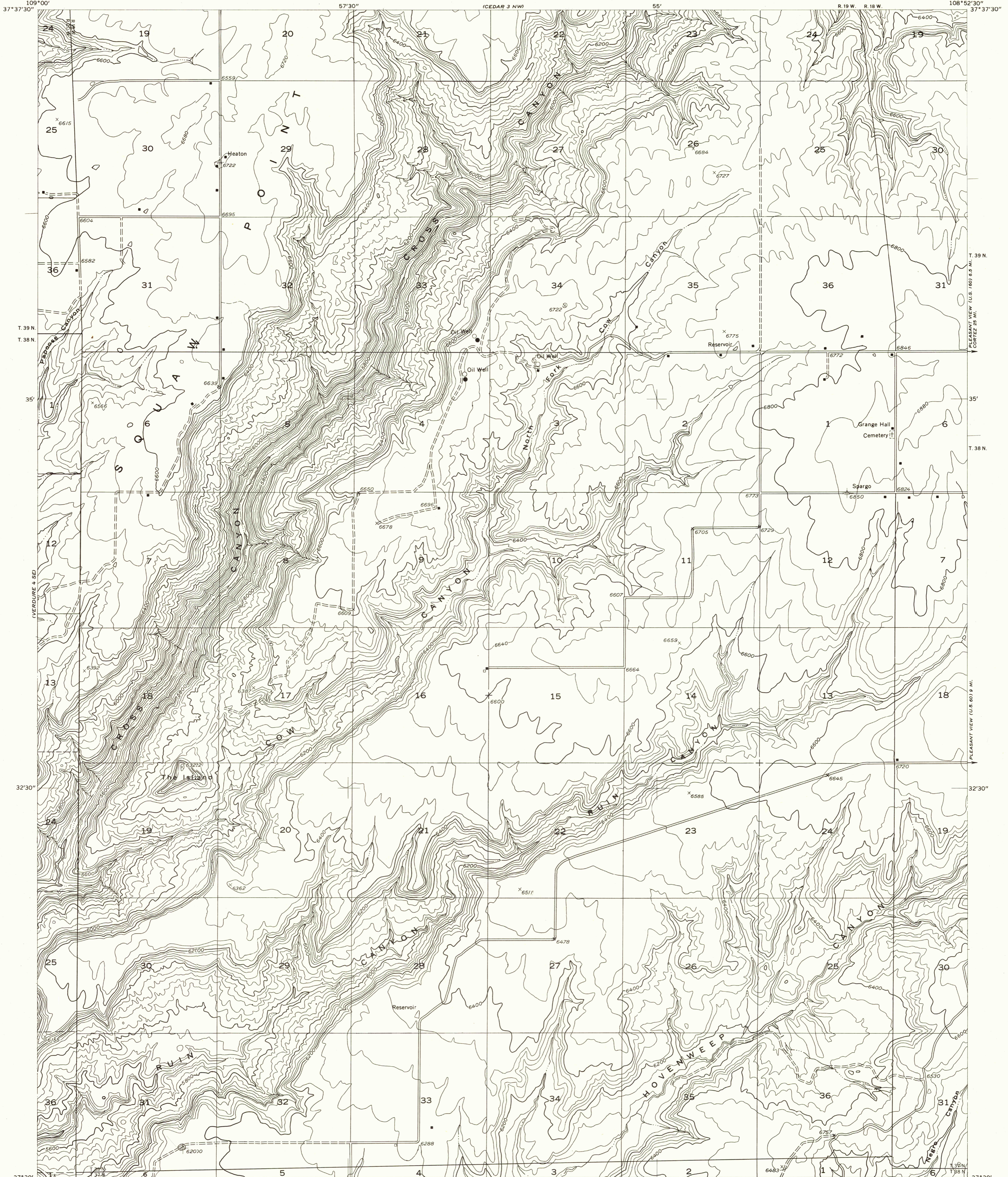
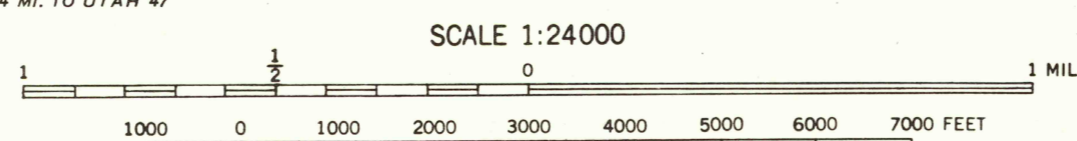
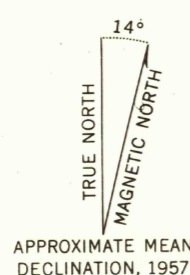


DEPARTMENT OF THE INTERIOR  
GEOLOGICAL SURVEY

CEDAR 3 SW QUADRANGLE  
COLORADO—MONTEZUMA CO.



Mapped by the Geological Survey 1957  
Topography by Kelsh plotter from  
aerial photographs taken 1955  
Dashed land lines indicate approximate locations  
Symbols and other detail herein  
drawn for 1:62 500 scale publication



CONTOUR INTERVAL 40 FEET  
DATUM IS MEAN SEA LEVEL

INTERIOR-GEOLOGICAL SURVEY, WASHINGTON, D. C. 20515

USGS  
Historical File  
Topographic Division

ROAD CLASSIFICATION  
Improved ——— Unimproved - - - - -

U.S.G.S.  
FILE COPY  
TOPOGRAPHIC DIVISION

CEDAR 3 SW, COLO.  
N3730—W10852.5/7.5

U.S.G.S.  
FILE COPY  
TOPOGRAPHIC DIVISION

JUL 28 1958