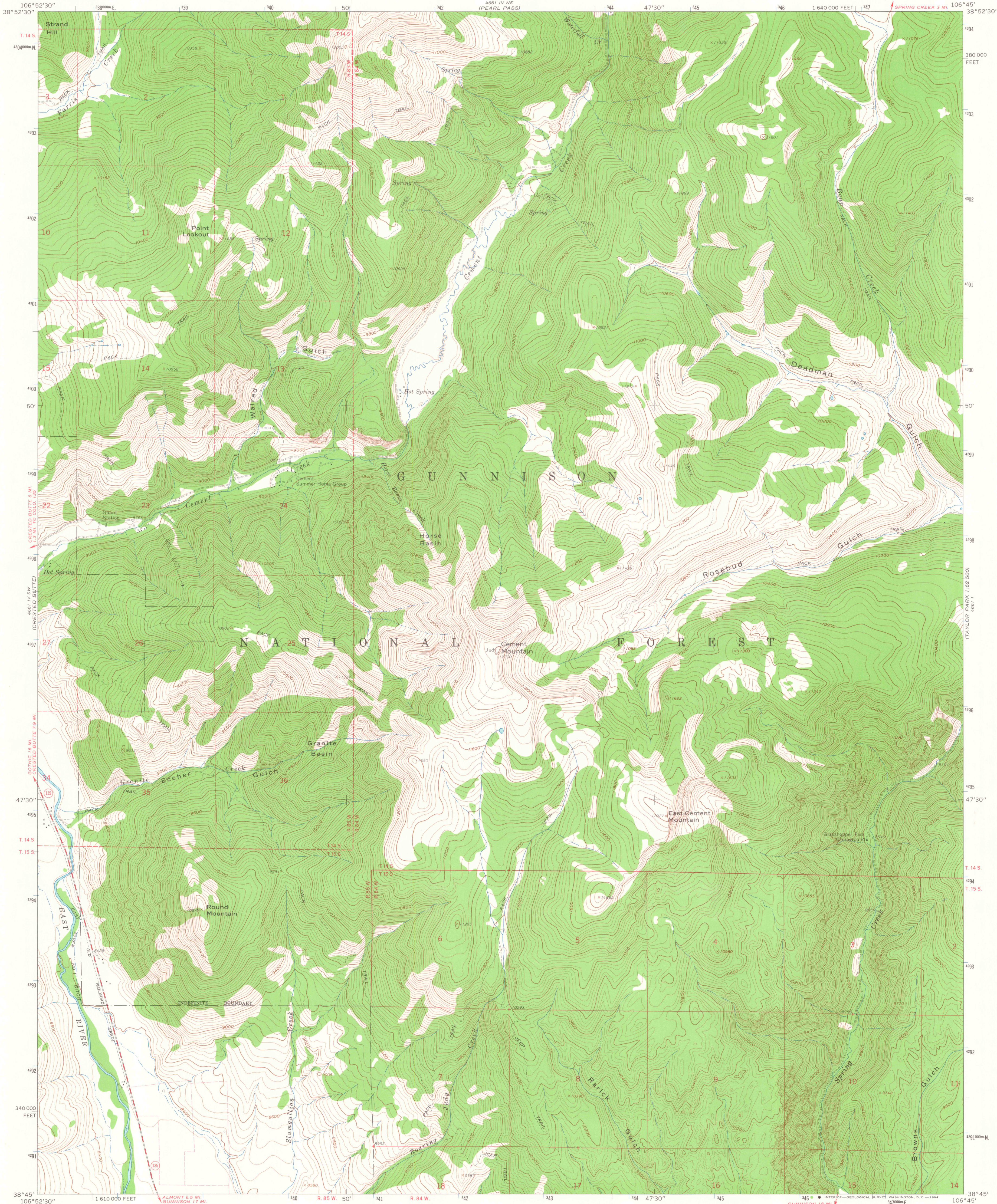


UNITED STATES
DEPARTMENT OF THE INTERIOR
GEOLOGICAL SURVEY

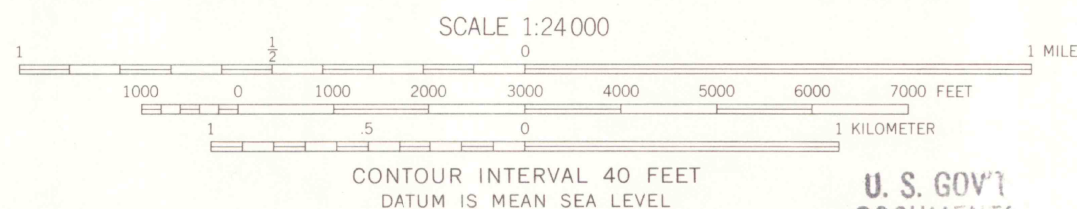
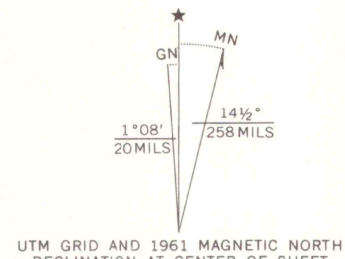
CEMENT MTN. QUADRANGLE
COLORADO—GUNNISON CO.
7.5 MINUTE SERIES (TOPOGRAPHIC)
SE/4 CRESTED BUTTE 15' QUADRANGLE

4661 IV NE
(PEARL PASS)

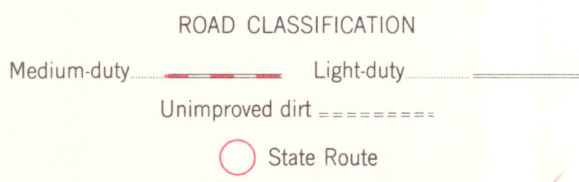
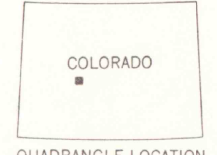
4661 IV SE
(TAYLOR PARK)



Mapped, edited, and published by the Geological Survey
Control by USGS and USC&GS
Topography by photogrammetric methods from aerial
photographs taken 1958. Field checked 1961
Polyconic projection. 1927 North American datum
10,000-foot grid based on Colorado coordinate system, central zone
1000-meter Universal Transverse Mercator grid ticks,
zone 13, shown in blue
Fine red dashed lines indicate selected fence and field lines where
generally visible on aerial photographs. This information is unchecked
Certain land lines are omitted because of insufficient data



U. S. GOV'T
DOCUMENTS
AUG 20 '64



CEMENT MTN., COLO.
SE/4 CRESTED BUTTE 15' QUADRANGLE
N3845—W10645/7.5

1961

AMS 4661 IV SE—SERIES V877

THIS MAP COMPLIES WITH NATIONAL MAP ACCURACY STANDARDS
FOR SALE BY U. S. GEOLOGICAL SURVEY, DENVER 25, COLORADO OR WASHINGTON 25, D. C.
A FOLDER DESCRIBING TOPOGRAPHIC MAPS AND SYMBOLS IS AVAILABLE ON REQUEST