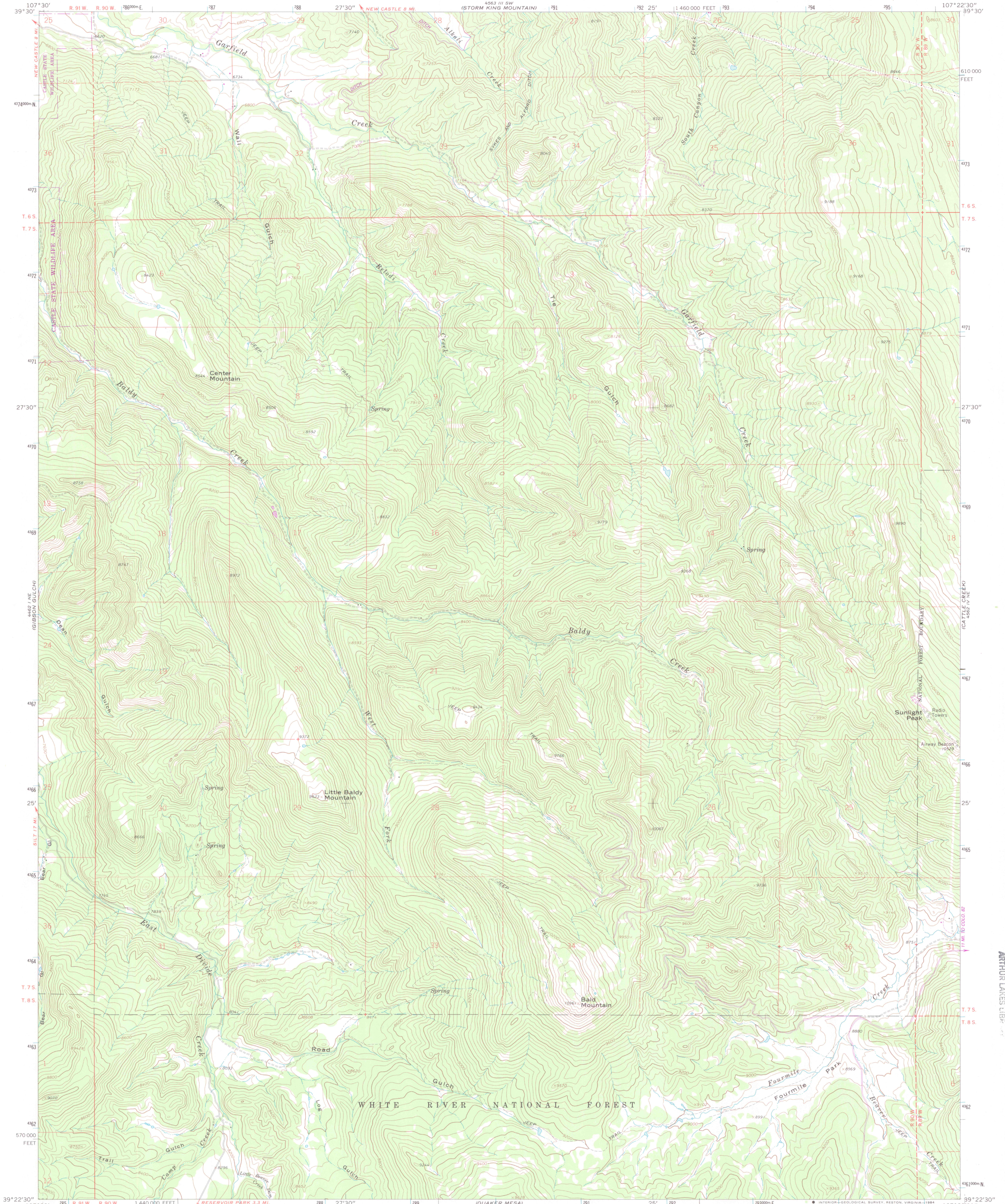


UNITED STATES
DEPARTMENT OF THE INTERIOR
GEOLOGICAL SURVEY

CENTER MOUNTAIN QUADRANGLE
COLORADO—GARFIELD CO.
7.5 MINUTE SERIES (TOPOGRAPHIC)



Mapped, edited, and published by the Geological Survey
Control by USGS and NOS/NOAA

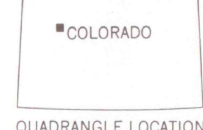
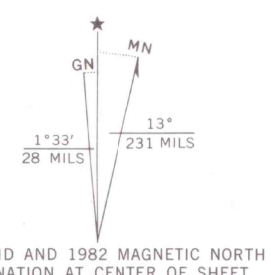
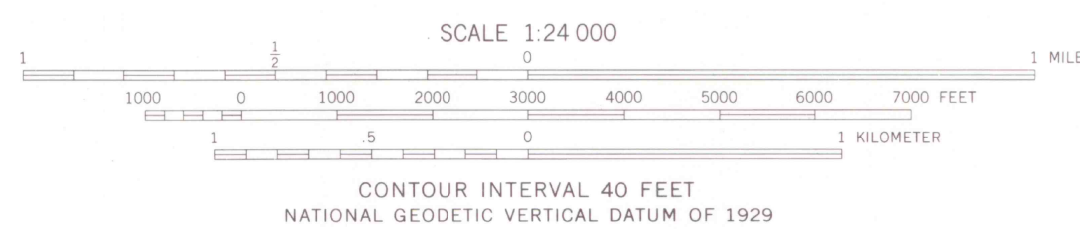
Topography by photogrammetric methods from aerial
photographs taken 1962. Field checked 1963

Polyconic projection. 1927 North American Datum
10,000-foot grid based on Colorado coordinate system, central zone
1000-meter Universal Transverse Mercator grid ticks,
zone 13, shown in blue

Fine red dashed lines indicate selected fence lines
Where omitted, land lines have not been established

To place on the predicted North American Datum 1983
move the projection lines 5 meters north and
54 meters east as shown by dashed corner ticks

There may be private inholdings within the boundaries
of the National or State reservations shown on this map



ROAD CLASSIFICATION
Light duty ————— Unimproved dirt - - - - -
OFFICE COPY

CENTER MOUNTAIN, COLO.
39107-04-1F-024

1963
PHOTOREVISED 1982
DMA 4562 IV NW—SERIES V877

AUG 15 1984
MAP ROOM
ANTHUR LAKES LIB.

G
C222
S24
U5

LIBRARY USE ONLY