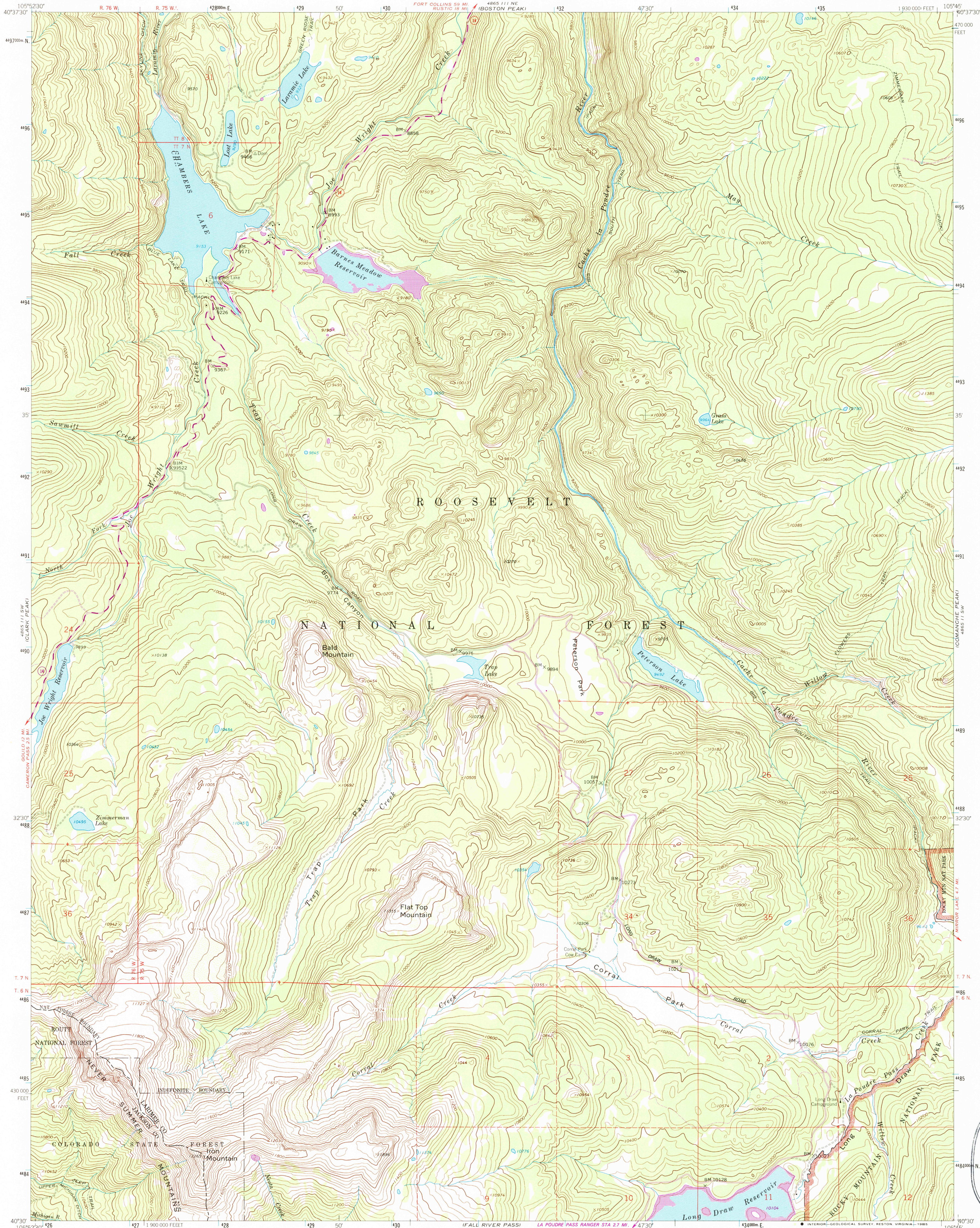


UNITED STATES
DEPARTMENT OF THE INTERIOR
GEOLOGICAL SURVEY

CHAMBERS LAKE QUADRANGLE
COLORADO
7.5 MINUTE SERIES (TOPOGRAPHIC)



USGS NMU HISTORICAL MAP
APR 23 1986
REC'D FILE COPY

Mapped, edited, and published by the Geological Survey

Control by USGS and NOS/NOAA

Topography by photogrammetric methods from aerial photographs taken 1958. Field checked 1962.

Polyconic projection. 1927 North American Datum

10,000-foot grid based on Colorado coordinate system, north zone

1000-meter Universal Transverse Mercator grid ticks, zone 13, shown in blue

Certain land lines are omitted because of insufficient data

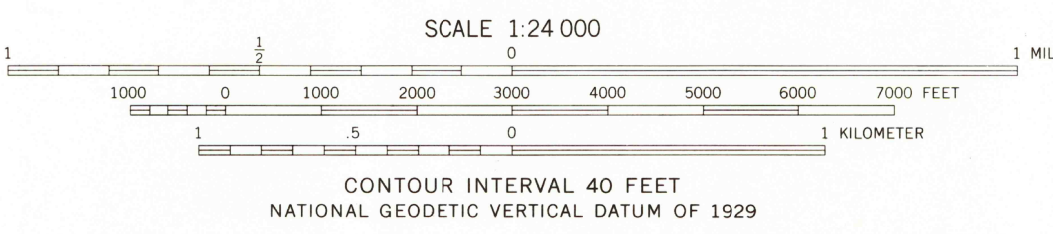
To place on the predicted North American Datum 1983

move the projection lines 6 meters north and 49 meters east as shown by dashed corner ticks

There may be private inholdings within the boundaries of the National or State reservations shown on this map

Revisions shown in purple compiled from aerial photographs taken 1976. Map edited 1977
This information not field checked

UTM GRID AND 1977 MAGNETIC NORTH DECLINATION AT CENTER OF SHEET



ROAD CLASSIFICATION
Light-duty ——— Unimproved dirt ———
State Route

CHAMBERS LAKE, COLO.
40105-E7-TF-024

1962
PHOTOREVISED 1977
DMA 4865 III SE-SERIES V877