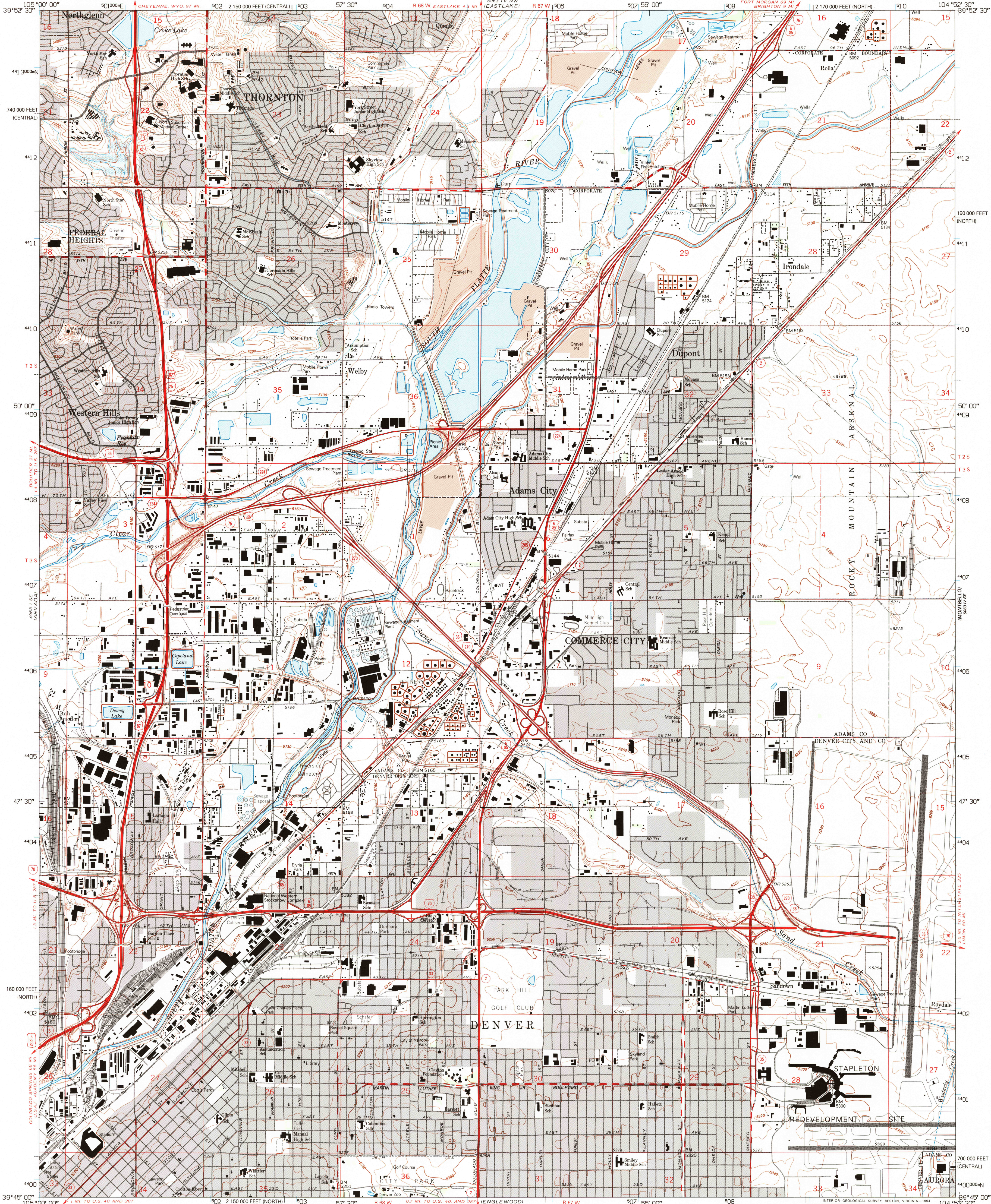
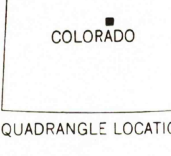
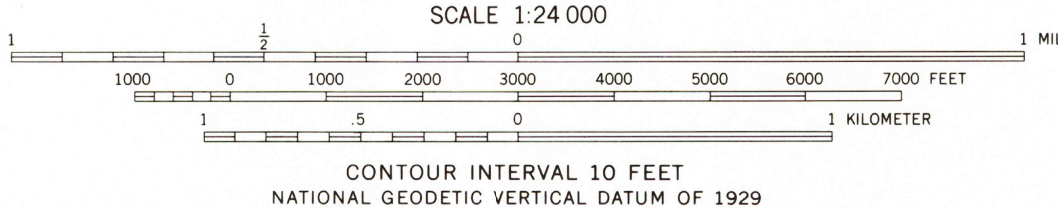
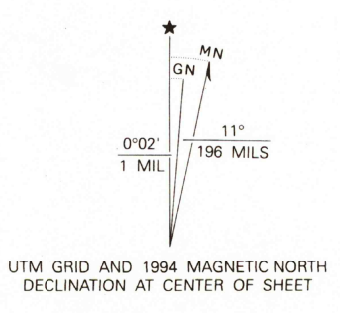


UNITED STATES
DEPARTMENT OF THE INTERIOR
GEOLOGICAL SURVEY

COMMERCE CITY QUADRANGLE
COLORADO
7.5 MINUTE SERIES (TOPOGRAPHIC)



Produced by the United States Geological Survey
Control by USGS and NOS/NOAA
Compiled from aerial photographs taken 1964. Field checked 1965
Revised from aerial photographs taken 1988 and other sources
Map edited 1994. Contours and land elevations have not been
revised and may conflict with other content
North American Datum of 1927 (NAD 27). Projection and
blue 1000-meter Universal Transverse Mercator ticks, zone 13
10000-foot ticks: Colorado Coordinate System north and central zones
North American Datum of 1983 (NAD 83) is shown by dashed
corner ticks. The values of the shift between NAD 27 and NAD 83
for 7.5-minute intersections are obtainable from National Geodetic
Survey NADCON software
There may be private inholdings within the boundaries of the
National or State reservations shown on this map
Gray tint indicates areas in which only landmark buildings are shown
Areas covered by dashed light-blue pattern are subject to
controlled inundation



ROAD CLASSIFICATION
Heavy-duty ——— Light-duty ———
Medium-duty ——— Unimproved dirt ———
Interstate Route ——— U.S. Route ——— State Route ———

COMMERCE CITY, CO
39104-G8-TF-024
1985
REVISED 1994
DMA 5063 IV SW-SERIES V877

