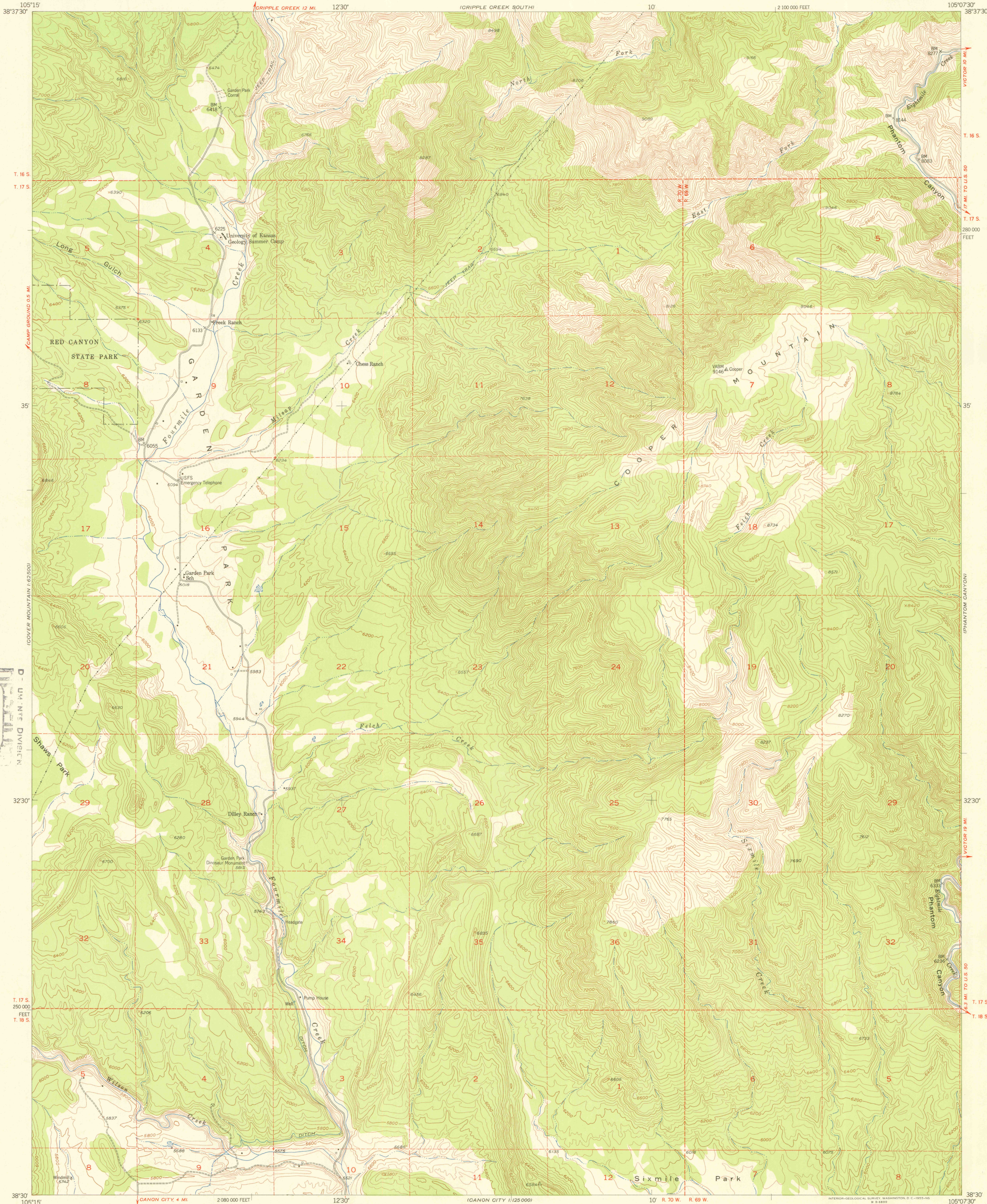


UNITED STATES  
DEPARTMENT OF THE INTERIOR  
GEOLOGICAL SURVEY

COOPER MOUNTAIN QUADRANGLE  
COLORADO-FREMONT CO.  
7.5 MINUTE SERIES (TOPOGRAPHIC)



SCHOOL OF MINES LIBRARY  
AUG 10 1955  
D. W. N. F. DIVISION

Mapped, edited, and published by the Geological Survey  
Control by USGS and USC&GS  
Topography from aerial photographs by multiplex methods  
Aerial photographs taken 1953. Field check 1954  
Polyconic projection. 1927 North American datum  
10,000-foot grid based on Colorado coordinate system,  
central zone  
Land lines are omitted in T. 16 S. - R. 69 W. and  
T. 16 S. - R. 70 W. because of insufficient data  
Dashed land lines indicate approximate locations  
Unchecked elevations are shown in brown

TRUE NORTH  
MAGNETIC NORTH  
APPROXIMATE MEAN  
DECLINATION, 1954

SCALE 1:24000  
1 0 1000 2000 3000 4000 5000 6000 7000 FEET  
1 5 0 1 KILOMETER  
CONTOUR INTERVAL 40 FEET  
DATUM IS MEAN SEA LEVEL

COLORADO  
QUADRANGLE LOCATION

ROAD CLASSIFICATION  
Heavy-duty ——— Light-duty ———  
Medium-duty ——— Unimproved dirt ———  
U. S. Route ——— State Route ———

COOPER MOUNTAIN, COLO.  
N3830-W10507.5/7.5  
1954

THIS MAP COMPLIES WITH NATIONAL MAP ACCURACY STANDARDS  
FOR SALE BY U. S. GEOLOGICAL SURVEY, FEDERAL CENTER, DENVER, COLORADO OR WASHINGTON 25, D. C.  
A FOLDER DESCRIBING TOPOGRAPHIC MAPS AND SYMBOLS IS AVAILABLE ON REQUEST

OFFICE COPY  
LIBRARY ONLY

LIGHT MAP ROOM