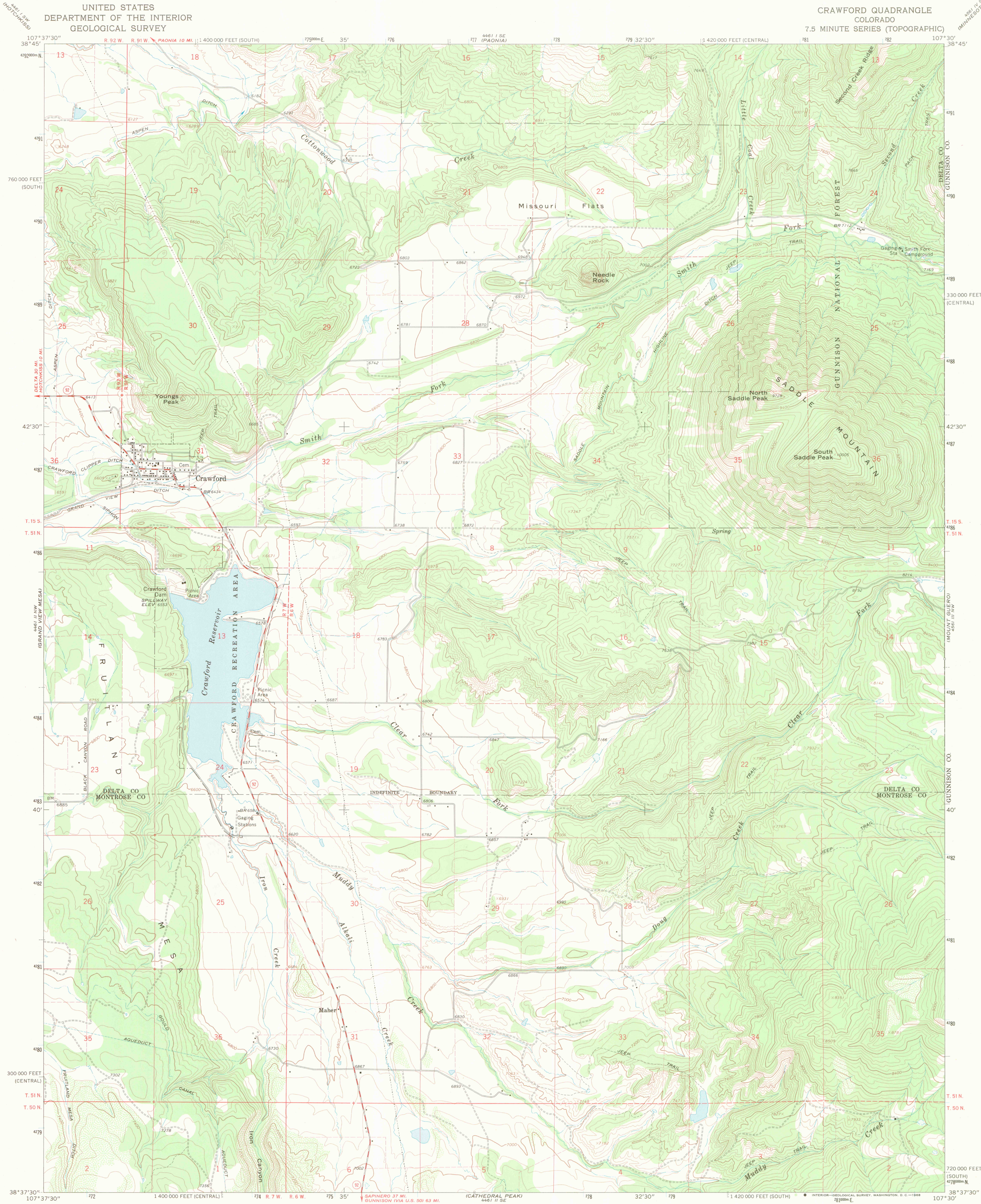
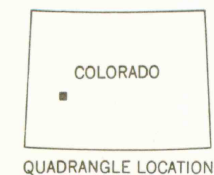
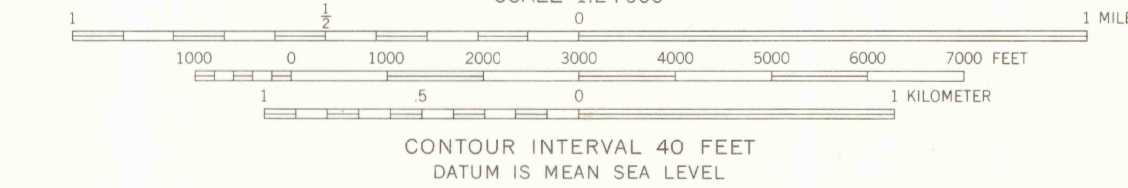
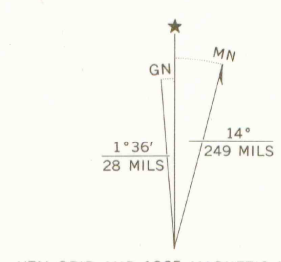


UNITED STATES
DEPARTMENT OF THE INTERIOR
GEOLOGICAL SURVEY

CRAWFORD QUADRANGLE
COLORADO
7.5 MINUTE SERIES (TOPOGRAPHIC)



Mapped, edited, and published by the Geological Survey
Control by USGS, USC&GS, and U. S. Bureau
of Reclamation
Topography by photogrammetric methods from aerial
photographs taken 1964. Southwest portion copied
from U. S. Bureau of Reclamation mapping 1965
Field checked 1965
Polyconic projection. 1927 North American datum
10,000-foot grids based on Colorado coordinate system,
central and south zones
1000-meter Universal Transverse Mercator grid ticks,
zone 13, shown in blue
Fine red dashed lines indicate selected fence lines



ROAD CLASSIFICATION
Medium-duty ——— Light-duty ———
Unimproved dirt = = = = =
State Route

THIS MAP COMPLIES WITH NATIONAL MAP ACCURACY STANDARDS
FOR SALE BY U.S. GEOLOGICAL SURVEY, DENVER, COLORADO 80225, OR WASHINGTON, D. C. 20242
A FOLDER DESCRIBING TOPOGRAPHIC MAPS AND SYMBOLS IS AVAILABLE ON REQUEST

CRAWFORD, COLO.
N3837.5—W10730.7/5

1965
AMS 4461 II NE—SERIES V877