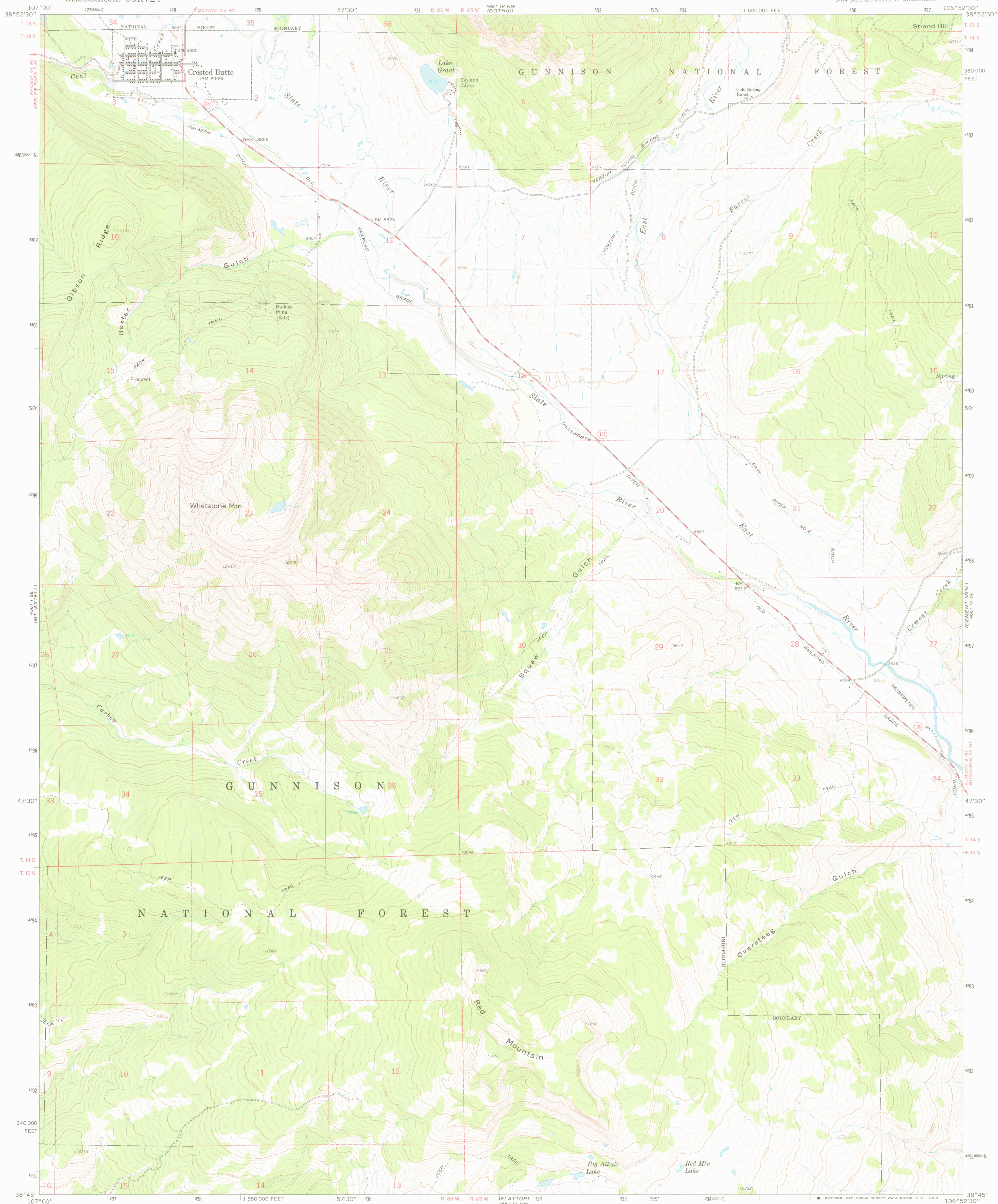
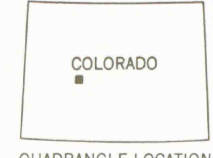
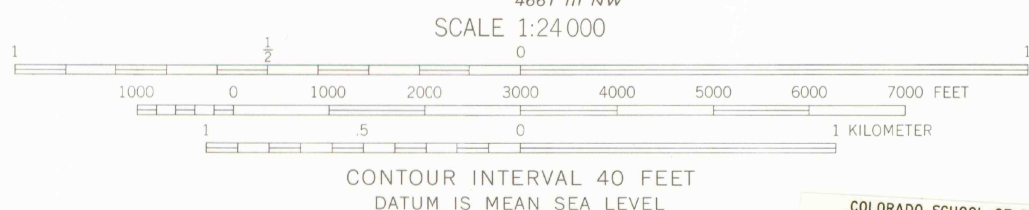
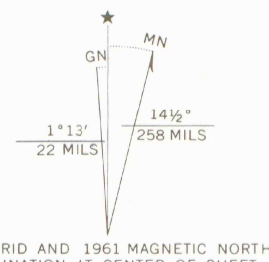


UNITED STATES  
DEPARTMENT OF THE INTERIOR  
GEOLOGICAL SURVEY

CRESTED BUTTE QUADRANGLE  
COLORADO—GUNNISON CO.  
7.5 MINUTE SERIES (TOPOGRAPHIC)  
SW/4 CRESTED BUTTE 15' QUADRANGLE



Mapped, edited, and published by the Geological Survey  
Control by USGS and USC&GS.  
Topography by photogrammetric methods from aerial  
photographs taken 1958. Field checked 1961.  
Polyconic projection. 1927 North American datum.  
10,000-foot grid based on Colorado coordinate system, central zone  
1000-meter Universal Transverse Mercator grid ticks,  
zone 13, shown in blue.  
Fine red dashed lines indicate selected fence and field lines where  
generally visible on aerial photographs. This information is unchecked  
Certain land lines omitted because of insufficient data



ROAD CLASSIFICATION  
Medium-duty ——— Light-duty ———  
Unimproved dirt ———  
State Route  
OFFICE COPY ONLY  
LIBRARY  
JUL 14 1999  
MAP ROOM  
ARTHUR LAKES LIBRARY  
COLORADO SCHOOL OF MINES  
CRESTED BUTTE, COLO.  
SW/4 CRESTED BUTTE 15' QUADRANGLE  
N3845—W10652.5/7.5  
1961  
AMS 4661 IV SW—SERIES V877

THIS MAP COMPLIES WITH NATIONAL MAP ACCURACY STANDARDS  
FOR SALE BY U. S. GEOLOGICAL SURVEY, DENVER, COLORADO 80225 OR WASHINGTON, D. C. 20242  
A FOLDER DESCRIBING TOPOGRAPHIC MAPS AND SYMBOLS IS AVAILABLE ON REQUEST