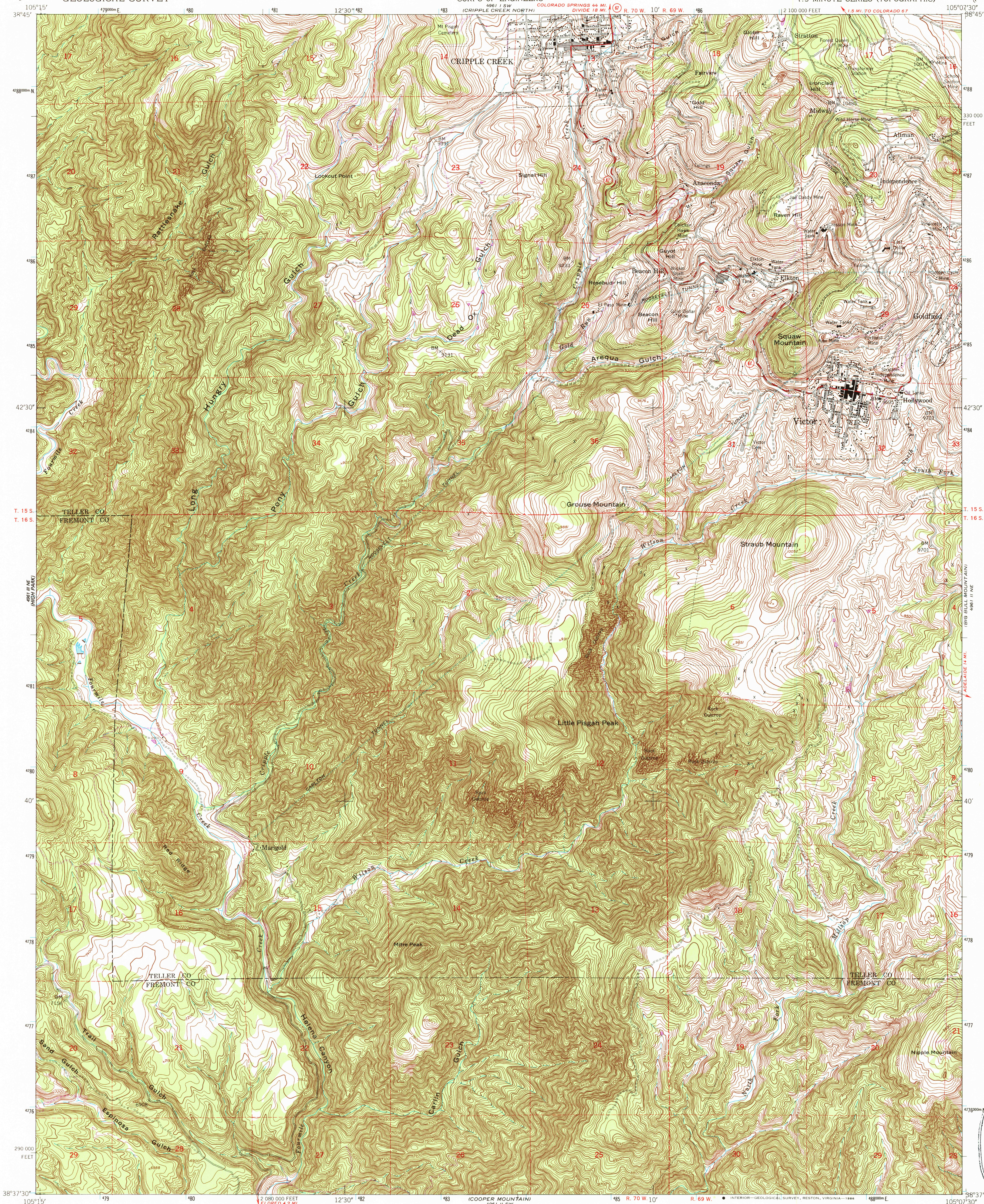


UNITED STATES
DEPARTMENT OF THE INTERIOR
GEOLOGICAL SURVEY

UNITED STATES
DEPARTMENT OF THE ARMY
CORPS OF ENGINEERS

CRIPPLE CREEK SOUTH QUADRANGLE
COLORADO
7.5 MINUTE SERIES (TOPOGRAPHIC)



Mapped by the Army Map Service
Published for civil use by the Geological Survey

Control by USGS, NOS/NOAA, and USCE

Topography from aerial photographs by multiplex methods
Aerial photographs taken 1950. Field check 1951

Polyconic projection. 1927 North American Datum
10,000-foot grid based on Colorado coordinate system,
central zone

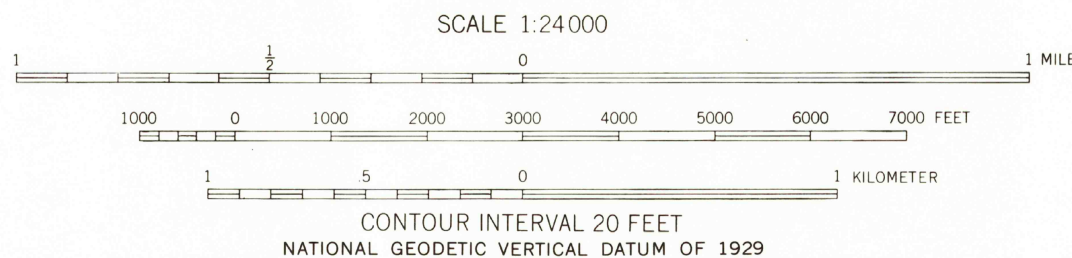
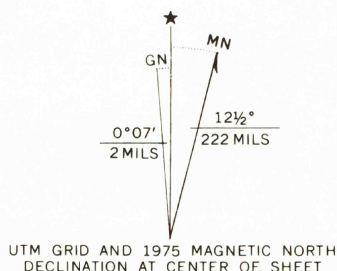
Dashed land lines indicate approximate locations

Unchecked elevations are shown in brown

Locations of all boundaries are approximate

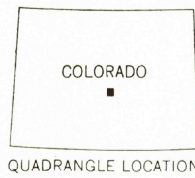
1000-meter Universal Transverse Mercator grid ticks,
zone 13, shown in blue

Revisions shown in purple compiled by the Geological
Survey from aerial photographs taken 1975. This
information not field checked.



THIS MAP COMPLIES WITH NATIONAL MAP ACCURACY STANDARDS
FOR SALE BY U.S. GEOLOGICAL SURVEY, DENVER, COLORADO 80225, OR RESTON, VIRGINIA 22092
A FOLDER DESCRIBING TOPOGRAPHIC MAPS AND SYMBOLS IS AVAILABLE ON REQUEST

To place on the predicted North American Datum 1983
move the projection lines 4 meters north and
48 meters east as shown by dashed corner ticks



ROAD CLASSIFICATION
Heavy-duty ——— Light-duty ———
Medium-duty ——— Unimproved dirt ———
State Route —○—

CRIPPLE CREEK SOUTH, COLO.
38105-F2-TF-024

1951
PHOTOREVISED 1975
DMA 4961 II NW-SERIES V877

REC'D FILE COPY

MAR 14 1986

USGS NMD HISTORICAL MAP