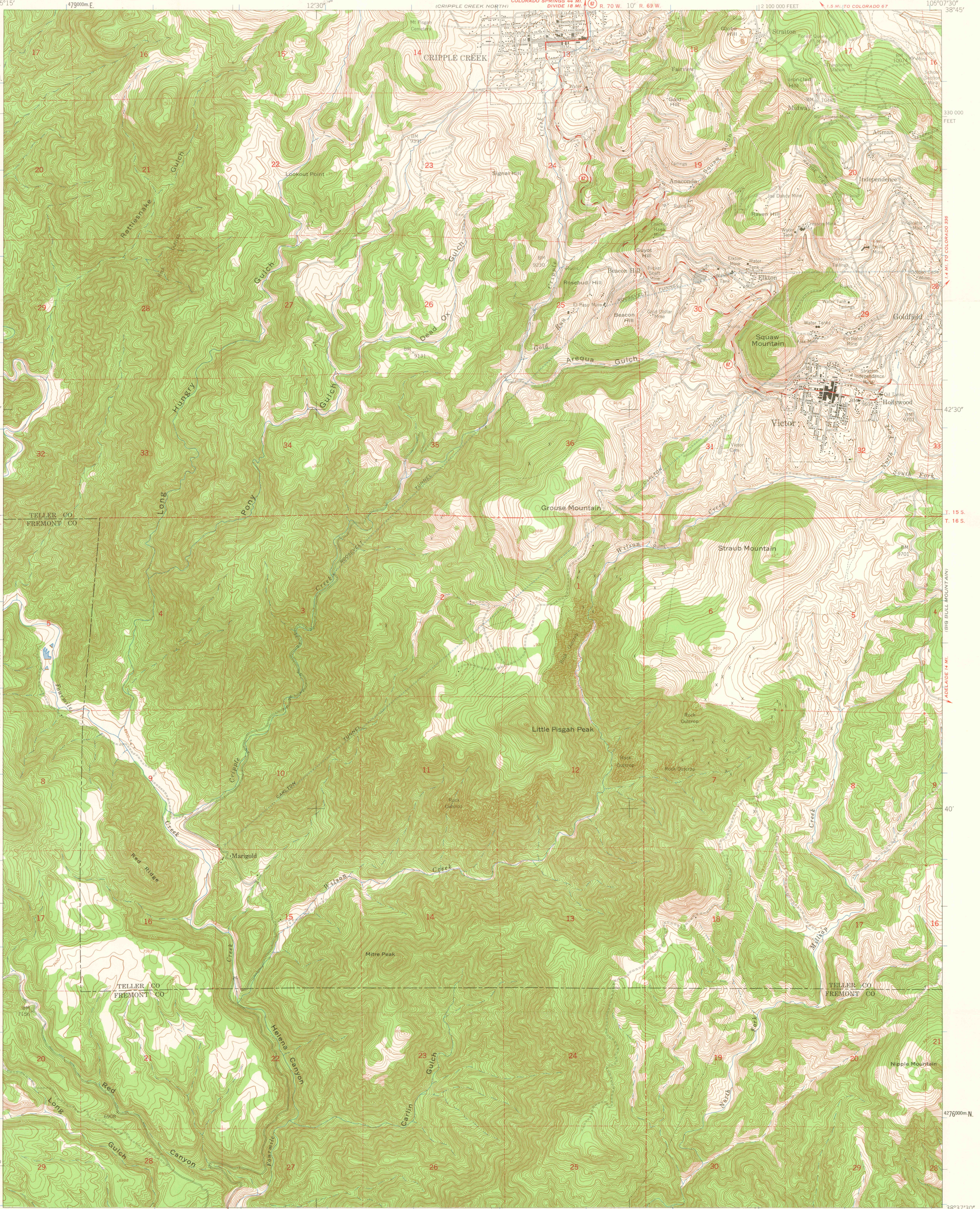
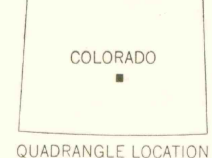
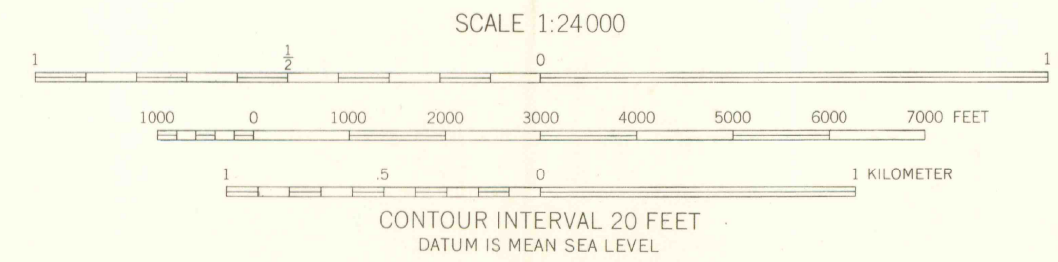
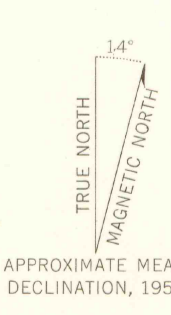


SUPERSEDED



Mapped by the Army Map Service
Published for civil use by the Geological Survey
Control by USC&GS, USGS, and USCE
Topography from aerial photographs by multiplex methods
Aerial photographs taken 1950. Field check 1951
Polyconic projection, 1927 North American datum
10,000-foot grid based on Colorado coordinate system,
central zone
Dashed land lines indicate approximate locations
Unchecked elevations are shown in brown
Locations of all boundaries are approximate
1000-meter Universal Transverse Mercator grid ticks,
zone 13, shown in blue



ROAD CLASSIFICATION
Heavy-duty ——— Light-duty ———
Medium-duty ——— Unimproved dirt ———
State Route

CRIPPLE CREEK SOUTH, COLO.
N3837.5-W10507.5/7.5

1951

OFFICE COPY

SUPERSEDED

THIS MAP COMPLIES WITH NATIONAL MAP ACCURACY STANDARDS.
FOR SALE BY U. S. GEOLOGICAL SURVEY, DENVER 25, COLORADO OR WASHINGTON 25, D. C.
A FOLDER DESCRIBING TOPOGRAPHIC MAPS AND SYMBOLS IS AVAILABLE ON REQUEST