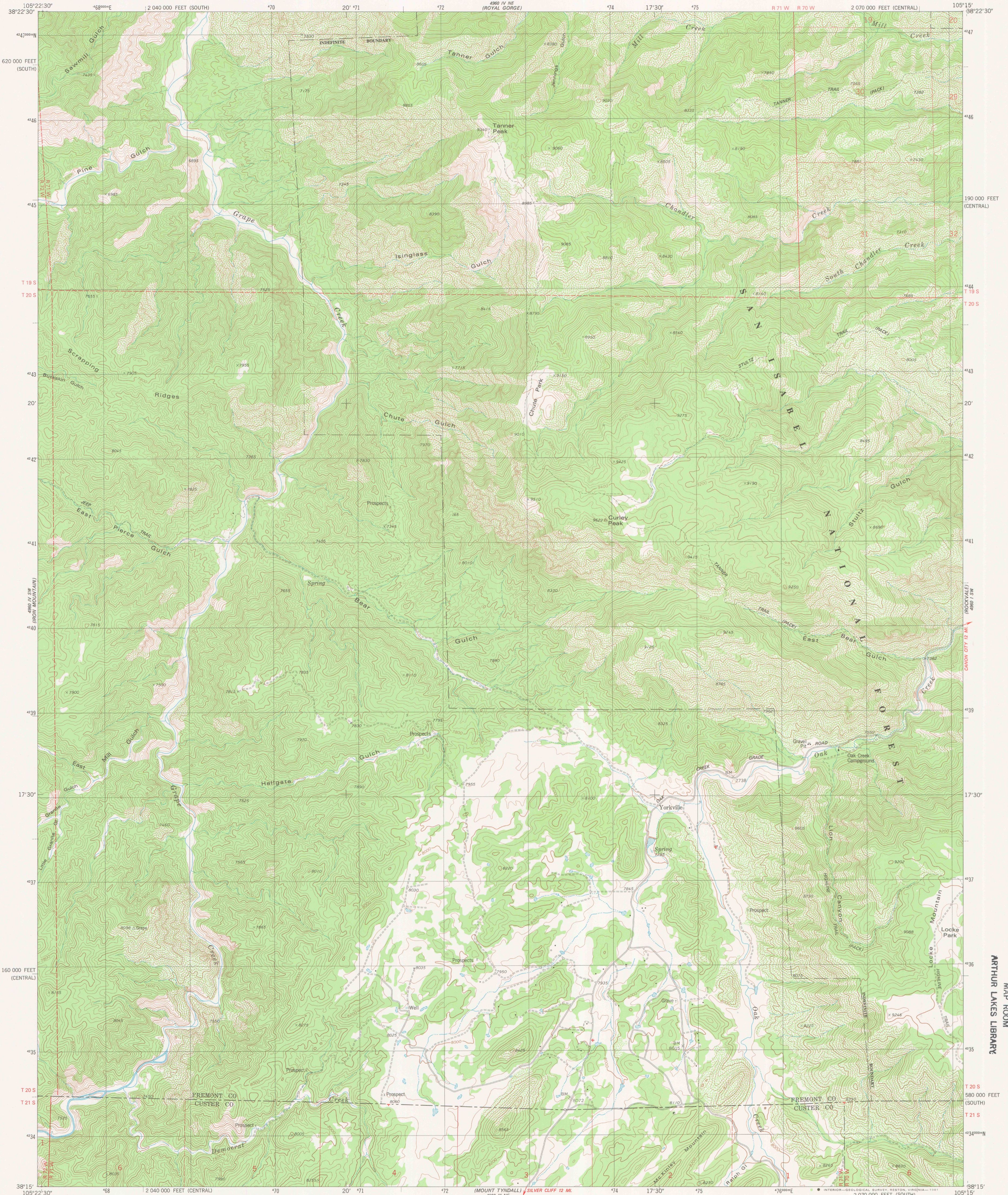
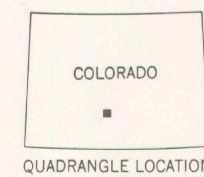
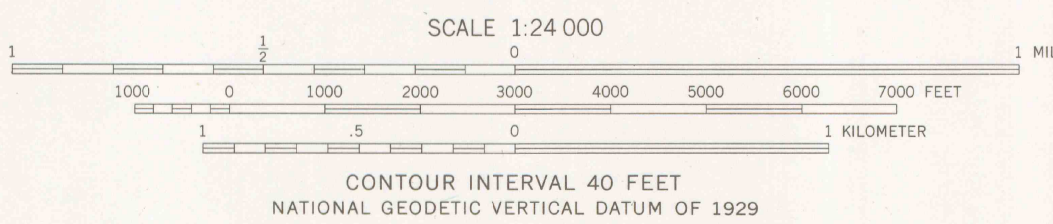
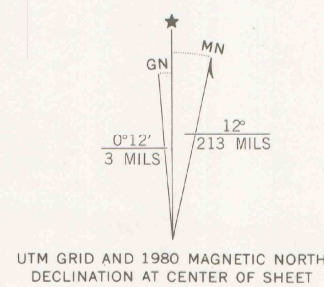


UNITED STATES
DEPARTMENT OF THE INTERIOR
GEOLOGICAL SURVEY

CURLEY PEAK QUADRANGLE
COLORADO
7.5 MINUTE SERIES (TOPOGRAPHIC)



Mapped, edited, and published by the Geological Survey
Control by USGS and NOS/NOAA
Topography by photogrammetric methods from aerial photographs
taken 1975. Field checked 1976. Map edited 1980
Projection: Colorado coordinate system, central zone
(Lambert conformal conic)
10,000 foot grid ticks based on Colorado coordinate system
central and south zones
1000-meter Universal Transverse Mercator grid, zone 13
1927 North American datum
To place on the predicted North American Datum 1983
move the projection lines 3 meters north and
49 meters east as shown by dashed corner ticks
Where omitted, land lines have not been established or are
not shown because of insufficient data
There may be private inholdings within the boundaries of the
National or State reservations shown on this map



ROAD CLASSIFICATION
Primary highway, hard surface ————
Secondary highway, hard surface ————
Light-duty road, hard or improved surface ————
Unimproved road ————
Interstate Route ————
U. S. Route ————
State Route ————

CURLEY PEAK, COLO.
SE/4 ROYAL GORGE 15' QUADRANGLE
N3815-W10515/7.5

1980
DMA 4960 IV SE-SERIES V877

JUL 14 1981
MAP ROOM
ARTHUR LAKES LIBRARY

LIBRARY USE ONLY