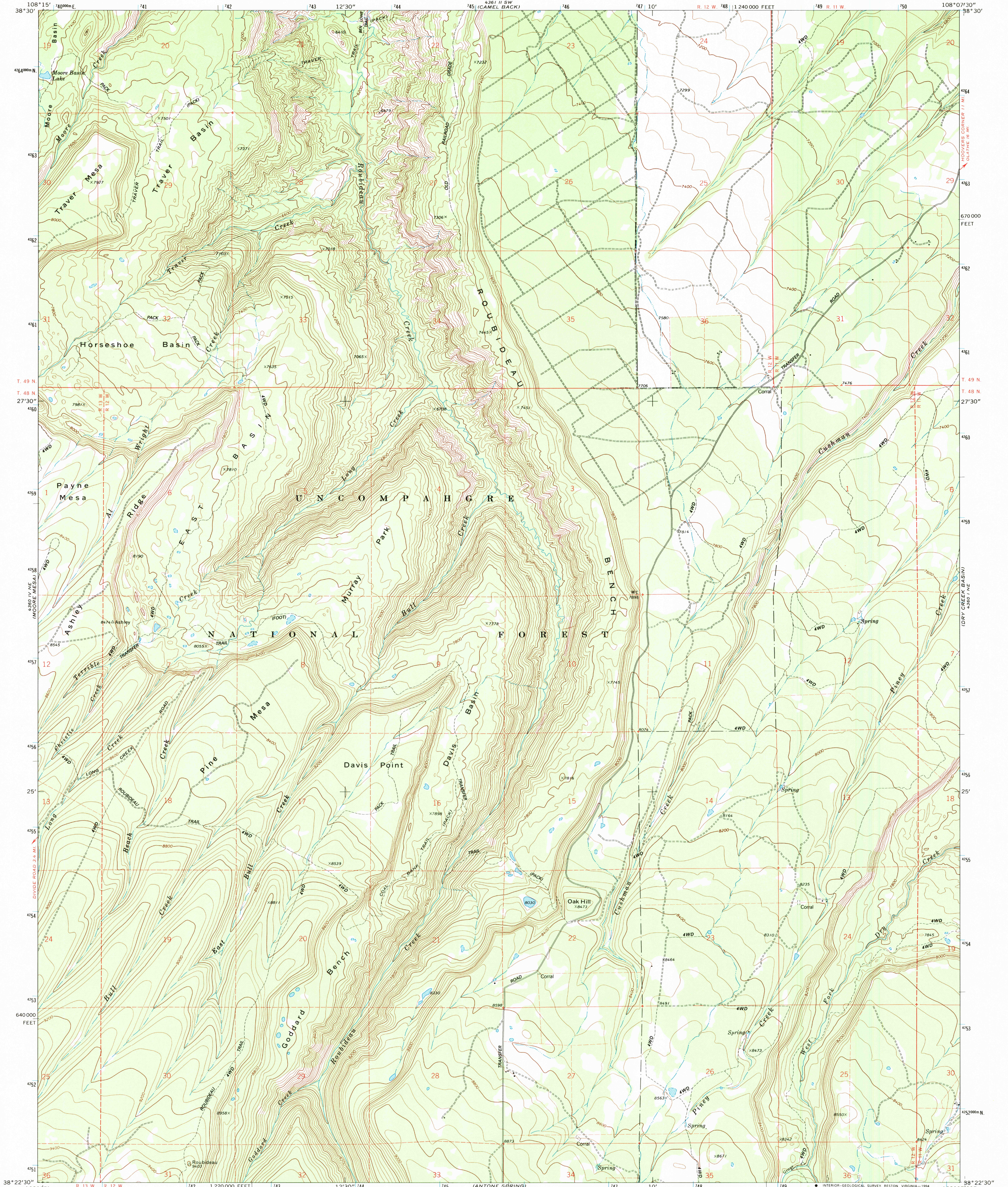
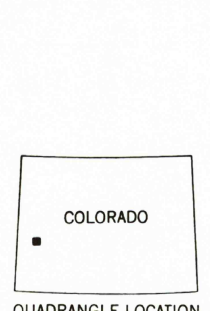
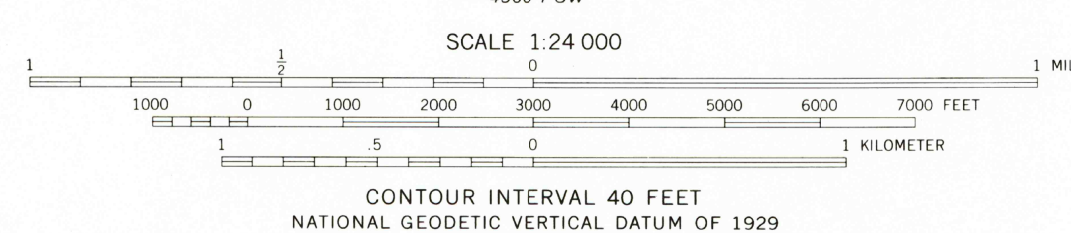
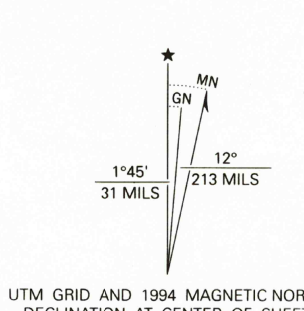


UNITED STATES  
DEPARTMENT OF THE INTERIOR  
GEOLOGICAL SURVEY

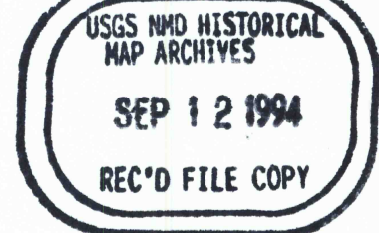
DAVIS POINT QUADRANGLE  
COLORADO-MONTROSE CO.  
7.5-MINUTE SERIES (TOPOGRAPHIC)



Maped by the U.S. Forest Service  
Produced by the United States Geological Survey  
Control by USGS and NOS/NOAA  
Compiled from aerial photographs taken 1964. Revised from aerial photographs taken 1989 and other sources. Field checked 1990  
Map edited 1994  
North American Datum of 1927 (NAD 27). Projection and 1000-foot ticks: Colorado Coordinate System, south zone (Lambert Conformal Conic)  
Blue 1000-meter Universal Transverse Mercator ticks, zone 12  
North American Datum of 1983 (NAD 83) is shown by dashed corner ticks. The values of the shift between NAD 27 and NAD 83 for 7.5-minute intersections are obtainable from National Geodetic Survey NADCON software  
There may be private inholdings within the boundaries of the National or State reservations shown on this map  
Fine red dashed lines indicate selected fence and field lines where generally visible on aerial photographs. This information is unchecked



ROAD CLASSIFICATION	
Primary highway, hard surface	Light duty road, hard or improved surface
Secondary highway, hard surface	Unimproved road
Interstate Route	U. S. Route
	State Route



DAVIS POINT, COLO.  
38108-D2-TF-024  
1994  
DMA 4360 1 NW-SERIES V877