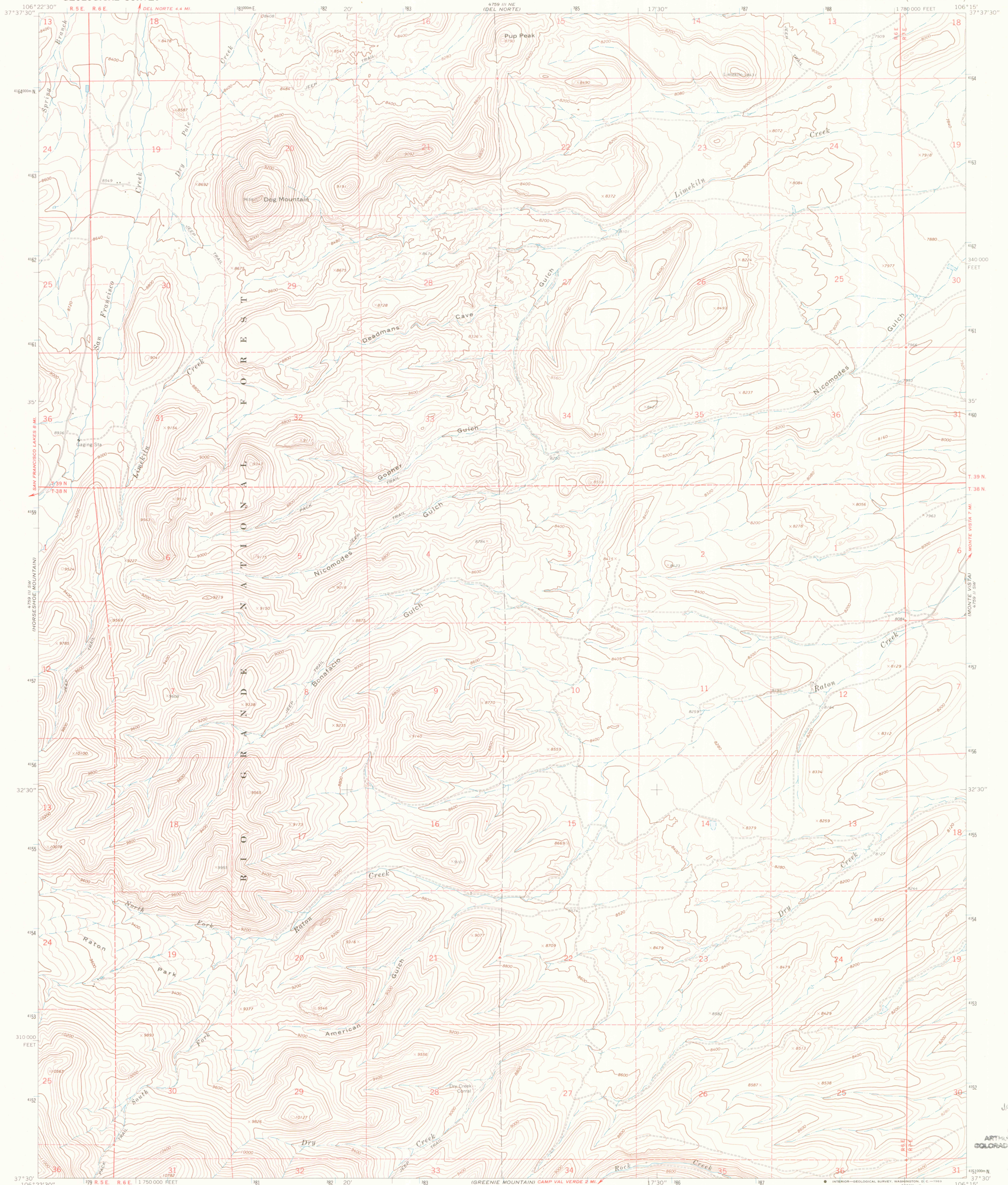
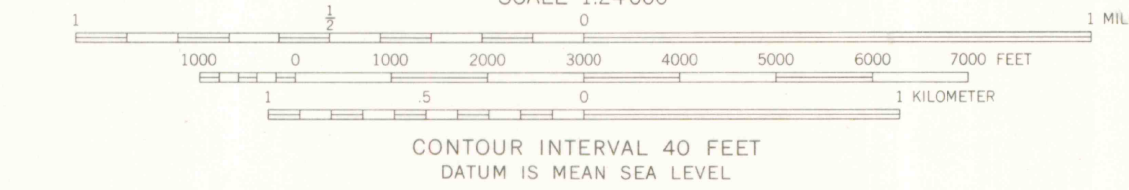
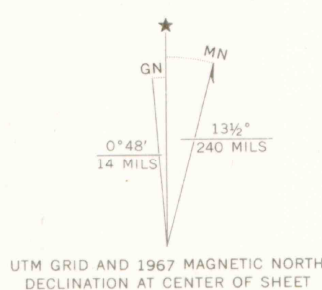


UNITED STATES
DEPARTMENT OF THE INTERIOR
GEOLOGICAL SURVEY

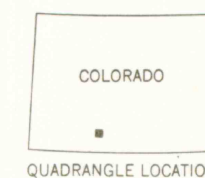
DOG MOUNTAIN QUADRANGLE
COLORADO—RIO GRANDE CO.
7.5 MINUTE SERIES (TOPOGRAPHIC)



Mapped by the U. S. Forest Service
Edited and published by the Geological Survey
Control by USGS, USC&GS, and U. S. Forest Service
Topography by photogrammetric methods from aerial
photographs taken 1960-1961. Field checked by USGS 1967
Polyconic projection. 1927 North American datum
10,000-foot grid based on Colorado coordinate system,
south zone
1000-meter Universal Transverse Mercator grid ticks,
zone 13, shown in blue
Fine red dashed lines indicate selected fence lines



THIS MAP COMPLIES WITH NATIONAL MAP ACCURACY STANDARDS
FOR SALE BY U. S. GEOLOGICAL SURVEY, DENVER, COLORADO 80225, OR WASHINGTON, D. C. 20242
A FOLDER DESCRIBING TOPOGRAPHIC MAPS AND SYMBOLS IS AVAILABLE ON REQUEST



ROAD CLASSIFICATION
Light-duty ———— Unimproved dirt ————

DOG MOUNTAIN, COLO.
N3730—W10615/7.5

1967

AMS 4759 III SE—SERIES V877

OFFICE COPY
LIBRARY USE ONLY

JAN 20 1968

ART HALL
COLORADO GEOLOGICAL SURVEY

G 3700
24
.G4
MAP ROOM