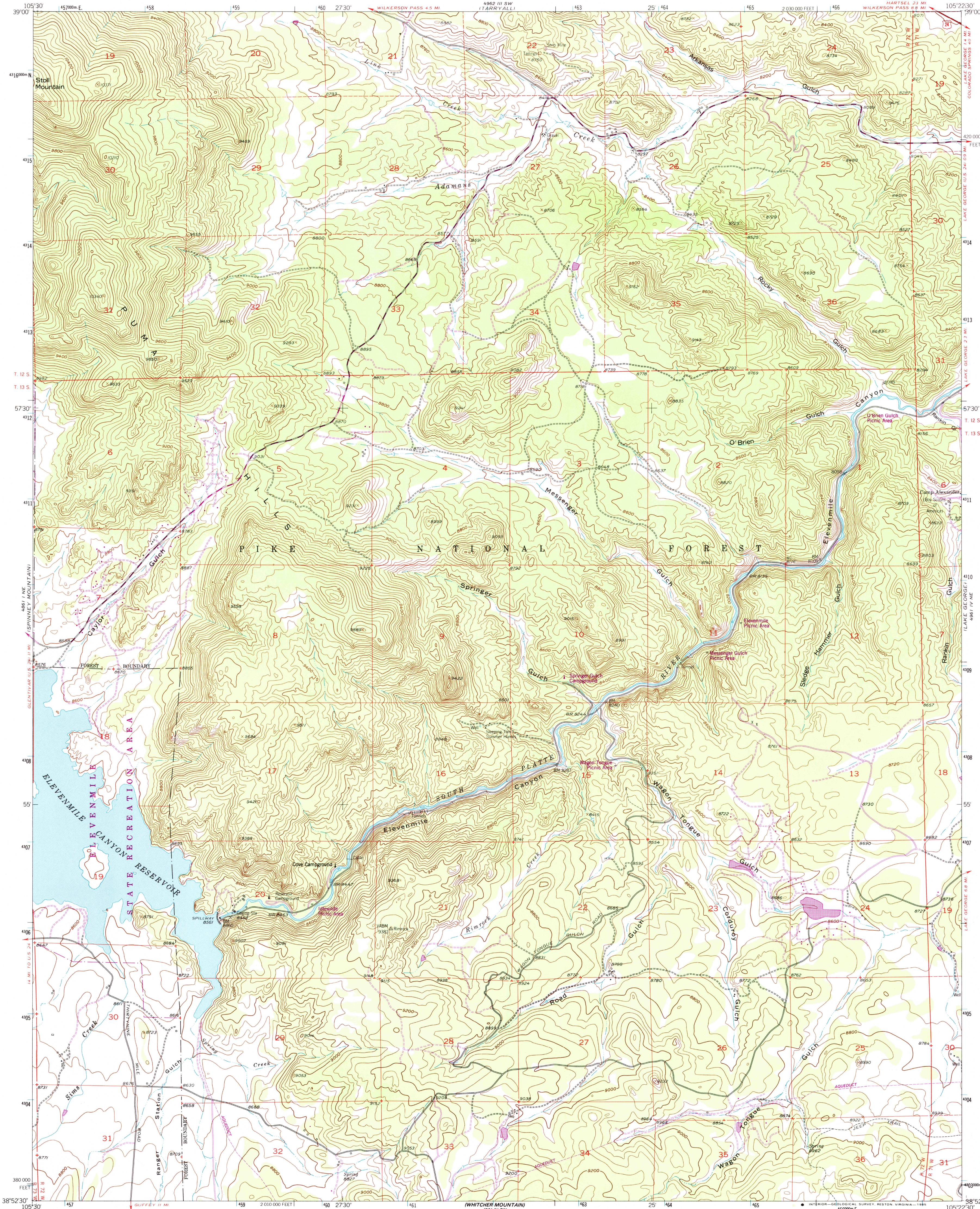


UNITED STATES
DEPARTMENT OF THE INTERIOR
GEOLOGICAL SURVEY

ELEVENMILE CANYON QUADRANGLE
COLORADO-PARK CO.
7.5 MINUTE SERIES (TOPOGRAPHIC)
NW 1/4 FLORISSANT 15' QUADRANGLE



Mapped, edited, and published by the Geological Survey as part of the Department of the Interior program for the development of the Missouri River Basin.

Control by USGS and NOS/NOAA

Topography from aerial photographs by multiplex methods

Aerial photographs taken 1953. Field check 1956

Polycyclic projection. 1927 North American Datum

10,000-foot grid based on Colorado coordinate system, central zone

1000-meter Universal Transverse Mercator grid ticks, zone 13, shown in blue

Dashed land lines indicate approximate locations

To place on the predicted North American Datum 1983 move the projection lines 4 meters north and 49 meters east as shown by dashed corner ticks

There may be private inholdings within the boundaries of the National or State reservations shown on this map

THIS MAP COMPLIES WITH NATIONAL MAP ACCURACY STANDARDS

FOR SALE BY U.S. GEOLOGICAL SURVEY, DENVER, COLORADO 80225, OR RESTON, VIRGINIA 22092

A FOLDER DESCRIBING TOPOGRAPHIC MAPS AND SYMBOLS IS AVAILABLE ON REQUEST

Revisions shown in purple and woodland compiled from aerial photographs taken 1983 and other source data

Partial field check by U. S. Forest Service. Map edited 1984

ROAD CLASSIFICATION

Medium-duty ——— Light-duty ———

Unimproved dirt ———

U.S. Route

Primary highway, hard surface

ELEVENMILE CANYON, COLO.

NW 1/4 FLORISSANT 15' QUADRANGLE

38105-H4-TF-024

1956

PHOTOREVISED 1984

DMA 4961 IV NW-SERIES V877