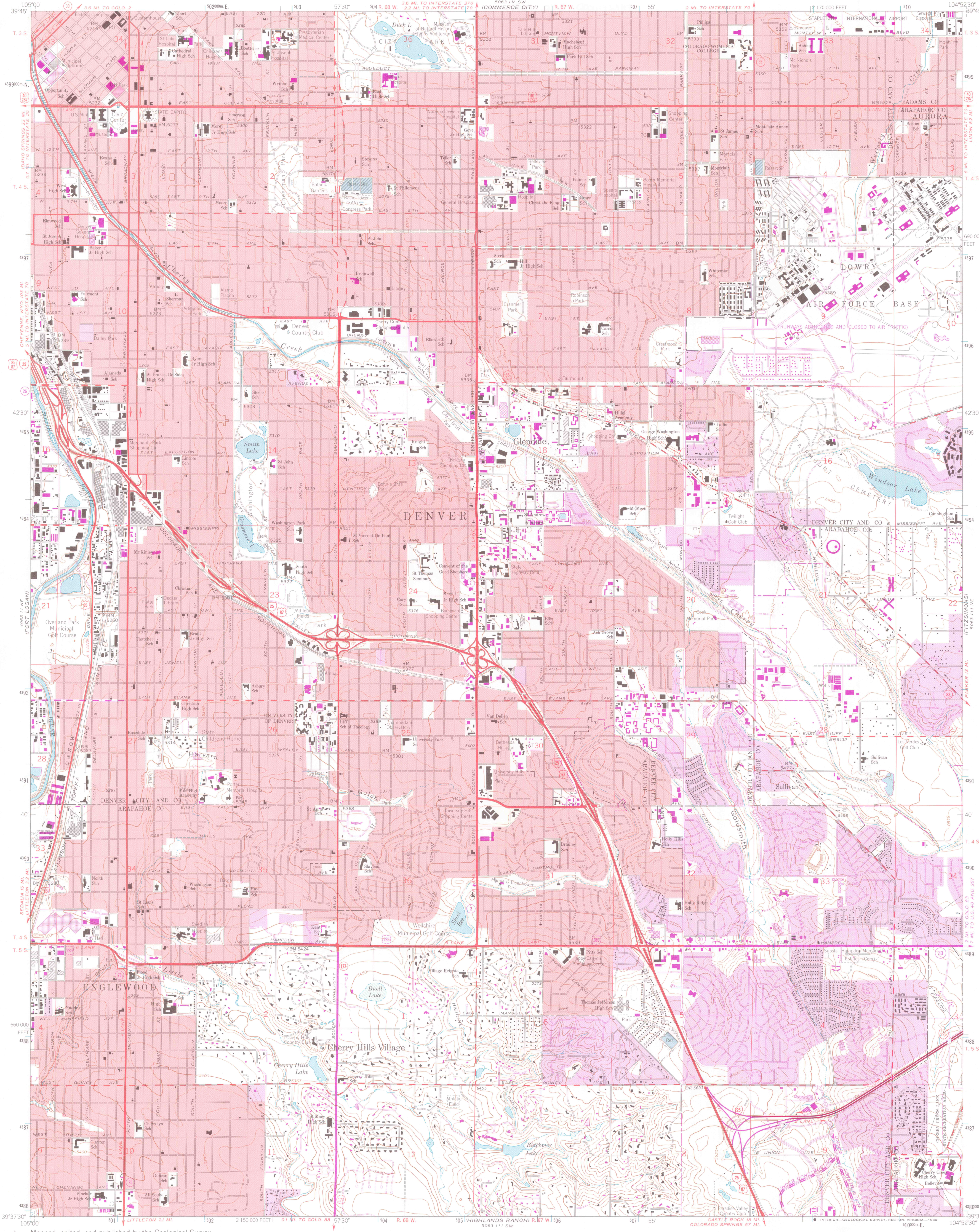


UNITED STATES
DEPARTMENT OF THE INTERIOR
GEOLOGICAL SURVEY

ENGLEWOOD QUADRANGLE
COLORADO
7.5 MINUTE SERIES (TOPOGRAPHIC)

GEOL



MAR 1995
MAP ROOM
ARTHUR LAKES LIBRARY
COLORADO SCHOOL OF MINES

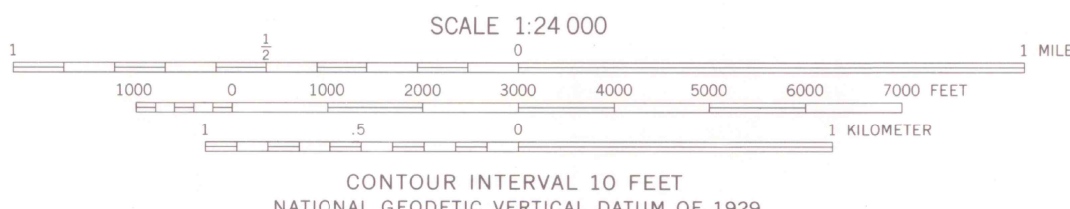
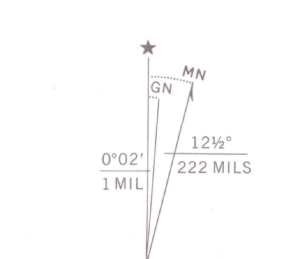
LIBRARY USE ONLY
OFFICE COPY

UNIVERSITY OF MINNESOTA

Maped, edited, and published by the Geological Survey
Control by USGS and NOS/NOAA
Topography by photogrammetric methods from aerial photographs
taken 1964. Field checked 1965. Supersedes map dated 1957
Polyconic projection. 1927 North American datum
10,000-foot grid based on Colorado coordinate system, central zone
1000-meter Universal Transverse Mercator grid ticks,
zone 13, shown in blue

Red tint indicates areas in which only landmark buildings are shown
To place on the predicted North American Datum 1983
move the projection lines 5 meters north and
47 meters east as shown by dashed corner ticks
There may be private inholdings within the boundaries of
the National or State reservations shown on this map

Revisions shown in purple compiled from aerial photographs
taken 1978 and other source data. This information not
field checked. Map edited 1980
Purple tint indicates extension of urban areas



GEOLOGICAL SURVEY OF THE UNITED STATES

THIS MAP COMPLIES WITH NATIONAL MAP ACCURACY STANDARDS
taken 1978 and other source data. This information not
field checked. Map edited 1980
A FOLDER DESCRIBING TOPOGRAPHIC MAPS AND SYMBOLS IS AVAILABLE ON REQUEST



ROAD CLASSIFICATION
Heavy-duty ——— Light-duty ———
Medium-duty ——— Unimproved dirt ———
Interstate Route U.S. Route State Route

TOPO CO 24000
ENGLEWOOD, COLO.
N3937.5-W10452.5/7.5
1965
PHOTOREVISED 1980
DMA 5063 111 NW-SERIES V877

G 3701 -
C222 -
S24
U5