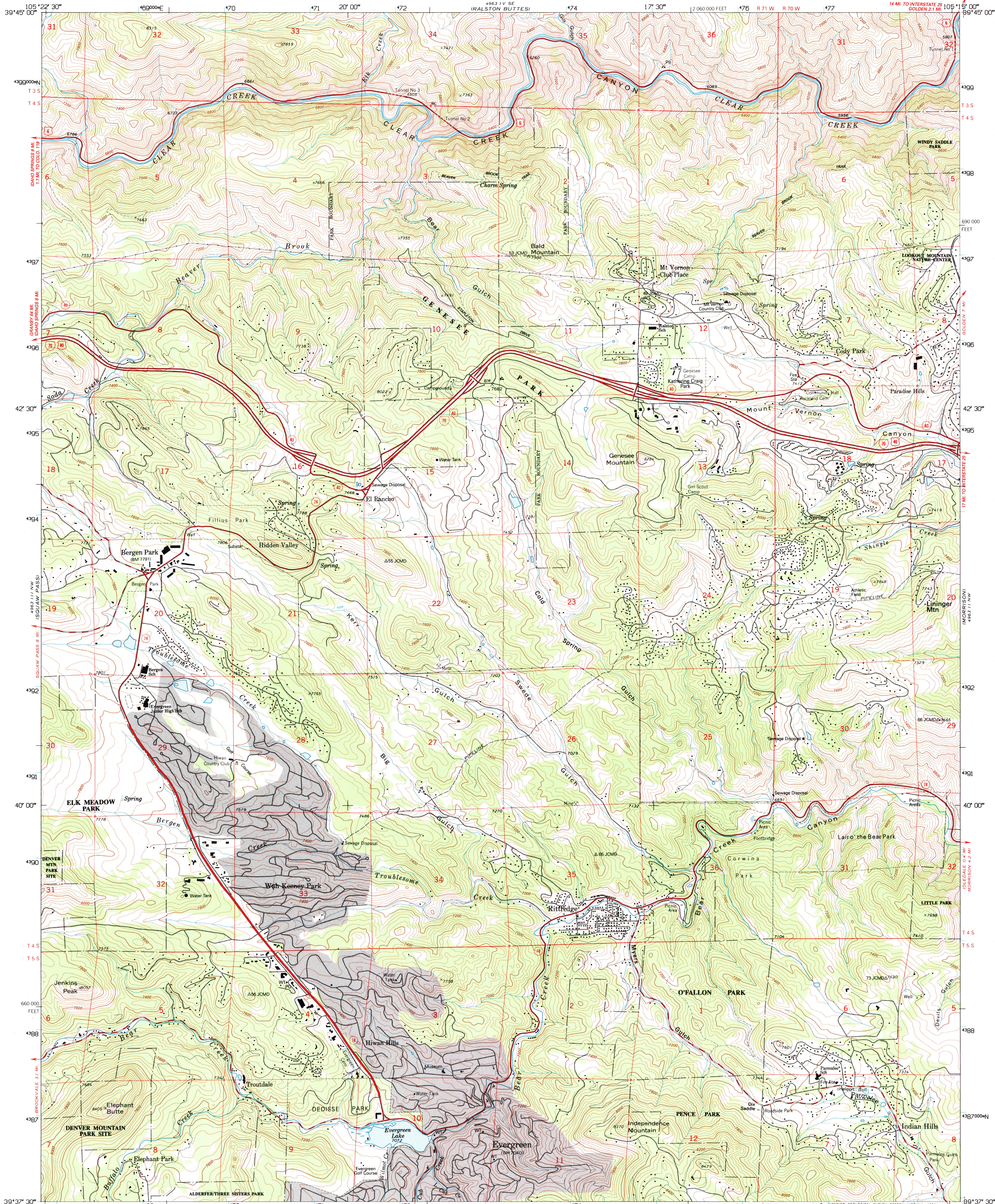
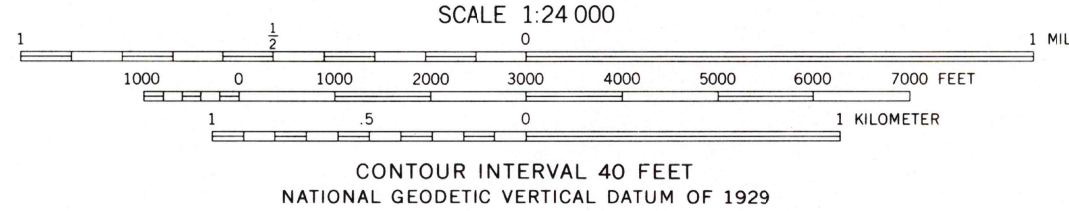
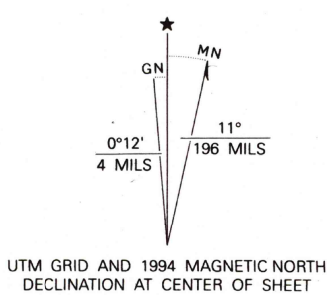


UNITED STATES
DEPARTMENT OF THE INTERIOR
GEOLOGICAL SURVEY

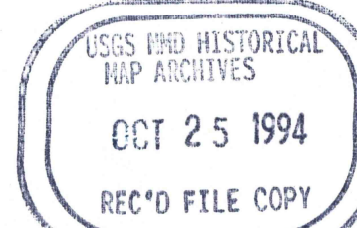
EVERGREEN QUADRANGLE
COLORADO-JEFFERSON CO.
7.5 MINUTE SERIES (TOPOGRAPHIC)



Produced by the United States Geological Survey
Control by USGS and NOS/NOAA
Compiled from aerial photographs taken 1953. Field checked 1965
Revised from aerial photographs taken 1990 and other sources
Map edited 1994. Contours and land elevations have not been
revised and may conflict with other content
North American Datum of 1927 (NAD 27). Projection and
blue 1000-meter Universal Transverse Mercator ticks, zone 13
10000-foot ticks: Colorado Coordinate System, central zone
North American Datum of 1983 (NAD 83) is shown by dashed
corner ticks. The values of the shift between NAD 27 and NAD 83
for 7.5-minute intersections are obtainable from National Geodetic
Survey NADCON software
Gray tint indicates areas in which only landmark buildings are shown



ROAD CLASSIFICATION
Heavy-duty ——— Light-duty ———
Medium-duty ——— Unimproved dirt ———
Interstate Route U.S. Route State Route



EVERGREEN, CO
39105-F3-TF-024
1965
REVISED 1994
DMA 4963 III NE-SERIES V877

THIS MAP COMPLIES WITH NATIONAL MAP ACCURACY STANDARDS
FOR SALE BY U. S. GEOLOGICAL SURVEY, DENVER, COLORADO 80225, OR RESTON, VIRGINIA 22092
A FOLDER DESCRIBING TOPOGRAPHIC MAPS AND SYMBOLS IS AVAILABLE ON REQUEST