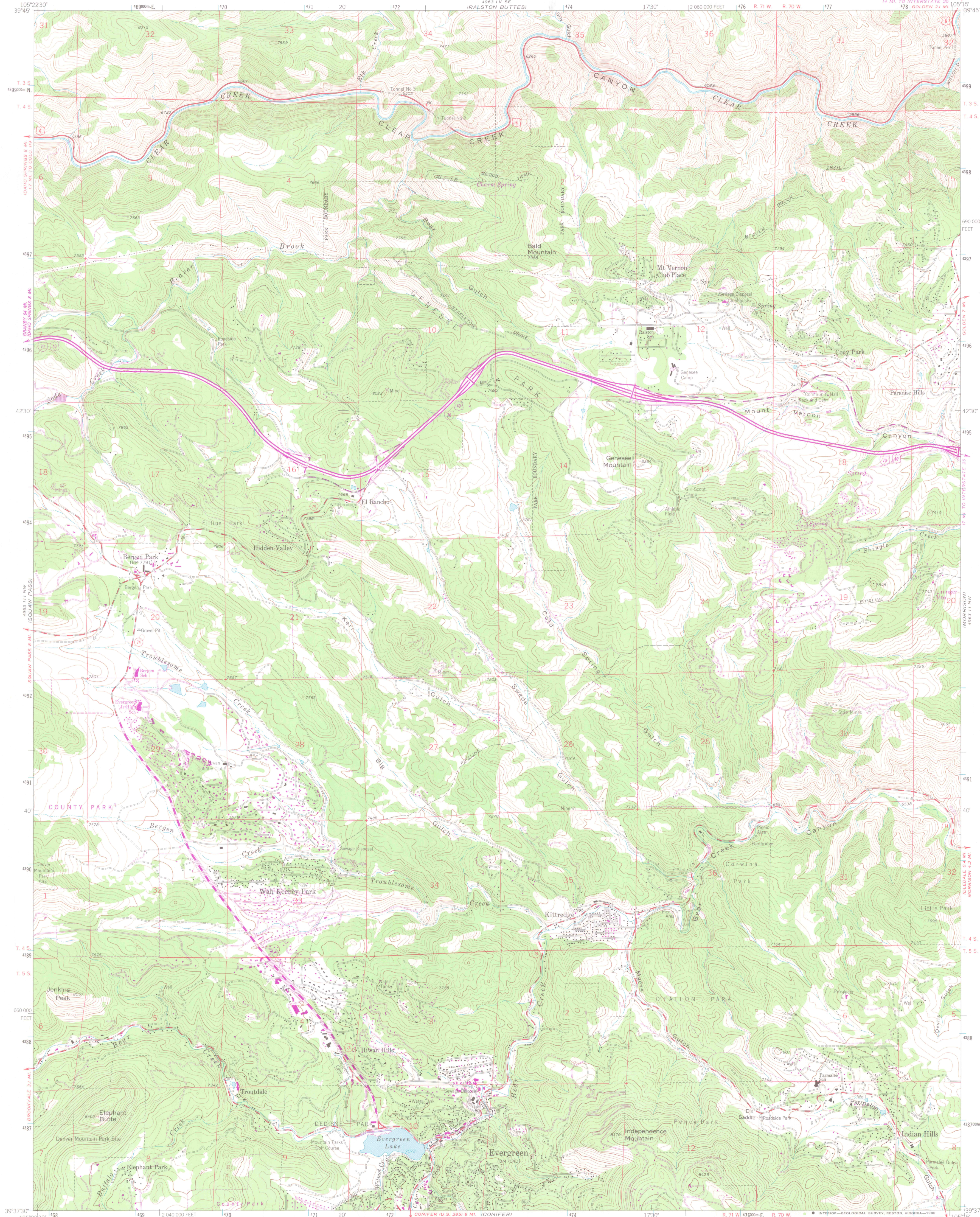


UNITED STATES
DEPARTMENT OF THE INTERIOR
GEOLOGICAL SURVEY

EVERGREEN QUADRANGLE
COLORADO-JEFFERSON CO.
7.5 MINUTE SERIES (TOPOGRAPHIC)



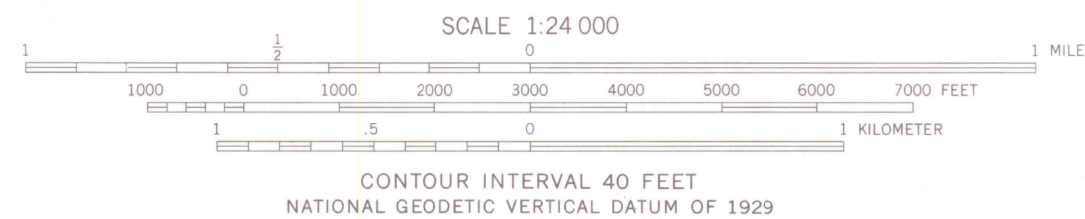
Mapped, edited, and published by the Geological Survey
Revised in cooperation with the Inter-County
Regional Planning Commission
Control by USGS and NOS/NOAA

Topography by photogrammetric methods from aerial photographs
taken 1953. Field checked 1957. Revised from
aerial photographs taken 1964. Field checked 1965

Polyconic projection. 1927 North American datum
10,000-foot grid based on Colorado coordinate system, central zone
1000-meter Universal Transverse Mercator grid ticks,
zone 13, shown in blue

To place on the predicted North American Datum 1983
move the projection lines 5 meters north and
48 meters east as shown by dashed corner ticks

Revisions shown in purple compiled from aerial photographs
taken 1973 and other source data. This information not
field checked. Map edited 1979



ROAD CLASSIFICATION
Heavy-duty _____ Light-duty _____
Medium-duty _____ Unimproved dirt _____
Interstate Route U.S. Route State Route

EVERGREEN, COLO.
N3937.5-W10515.7.5

1965
PHOTOREVISED 1979
DMA 4963 111 NE-SERIES V677

LIBRARY USE ONLY

OFFICE COPY

DEC 1 1980

MAP ROOM

ARTHUR LAKES LIBRARY