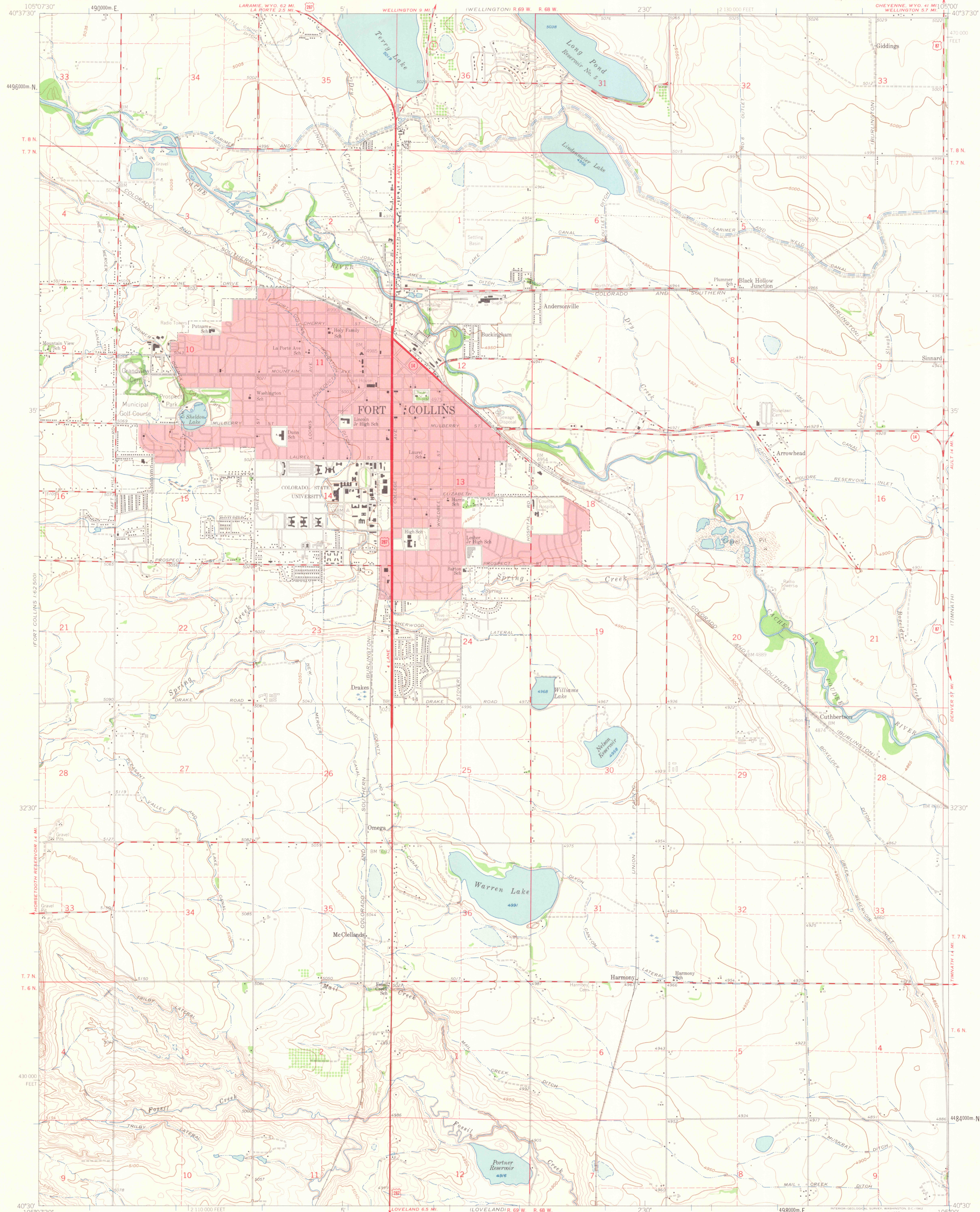


UNITED STATES  
DEPARTMENT OF THE INTERIOR  
GEOLOGICAL SURVEY

FORT COLLINS QUADRANGLE  
COLORADO-LARIMER CO.  
7.5 MINUTE SERIES (TOPOGRAPHIC)  
SE/4 FORT COLLINS 15 QUADRANGLE



Maped, edited, and published by the Geological Survey  
Control by USGS and USC&GS  
Topography by photogrammetric methods from aerial  
photographs taken 1958. Field checked 1960.  
Polyconic projection. 1927 North American datum.  
10,000 foot grid based on Colorado coordinate system,  
north zone.  
1000 meter Universal Transverse Mercator grid ticks,  
zone 13, shown in blue.  
Red tint indicates areas in which only landmark buildings are shown.  
Fine red dashed lines indicate selected fence and field lines where  
generally visible on aerial photographs. This information is unchecked.

SCALE 1:24,000  
CONTOUR INTERVAL 10 FEET  
DOTTED LINES REPRESENT 5-FOOT CONTOURS  
DATUM IS MEAN SEA LEVEL  
FOR SALE BY U.S. GEOLOGICAL SURVEY, DENVER 25, COLORADO OR WASHINGTON 25, D.C.  
A FOLDER DESCRIBING TOPOGRAPHIC MAPS AND SYMBOLS IS AVAILABLE ON REQUEST

ROAD CLASSIFICATION  
Heavy-duty ——— Light-duty ———  
Medium-duty ——— Unimproved dirt ———  
U.S. Route ——— State Route ———

FORT COLLINS, COLO.  
SE/4 FORT COLLINS 15 QUADRANGLE  
N4030-W10500/7.5

1960

OFFICE COPY

LIBRARY USE ONLY