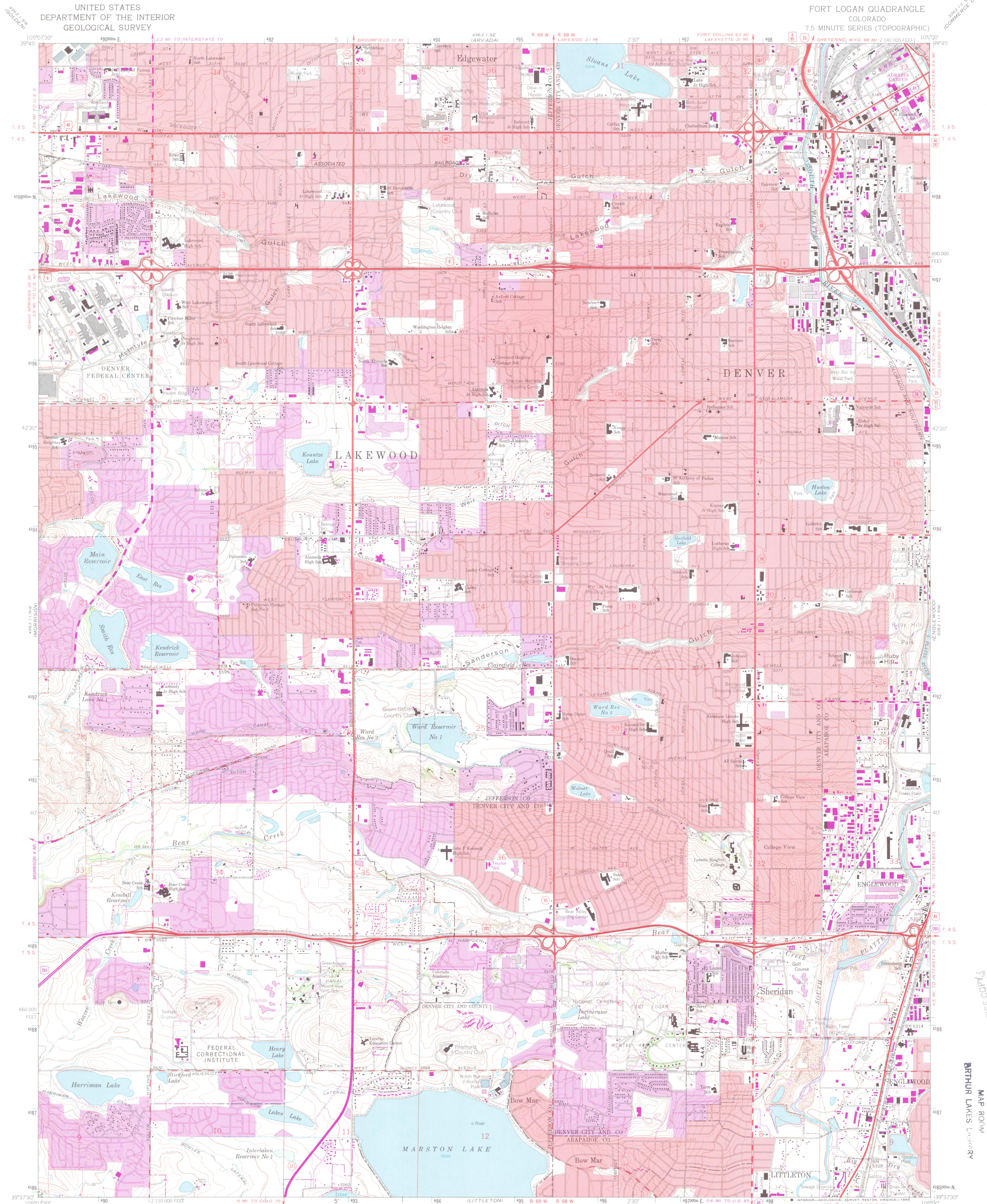


UNITED STATES  
DEPARTMENT OF THE INTERIOR  
GEOLOGICAL SURVEY

FORT LOGAN QUADRANGLE  
COLORADO  
7.5 MINUTE SERIES (TOPOGRAPHIC)



Maped, edited, and published by the Geological Survey

Control by USGS and NOS/NOAA

Topography by photogrammetric methods from aerial photographs taken 1964. Field checked 1965. Supersedes map dated 1957

Polyconic projection. 1927 North American datum. 10,000-foot grid based on Colorado coordinate system, central zone 1000-meter Universal Transverse Mercator grid ticks, zone 13, shown in blue

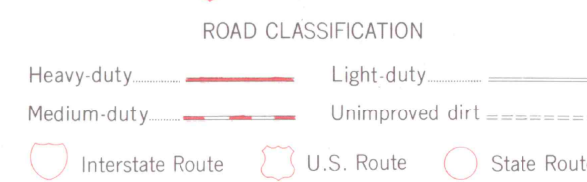
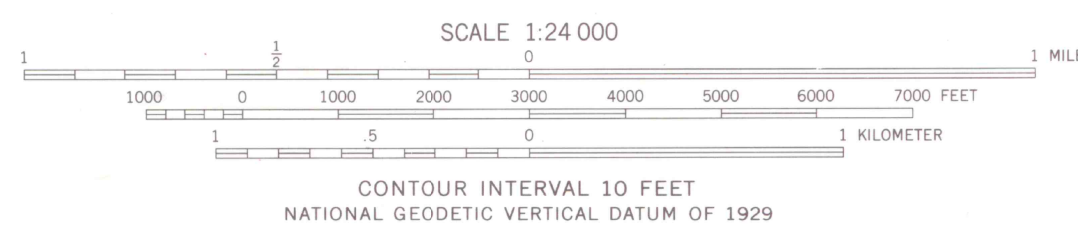
Red tint indicates areas in which only landmark buildings are shown

Fine red dashed lines indicate selected fence lines

To place on the predicted North American Datum 1983 move the projection lines 5 meters north and 48 meters east as shown by dashed corner ticks

Revisions shown in purple compiled from aerial photographs taken 1978 and other source data. This information not field checked. Map edited 1980

Purple tint indicates extension of urban areas



FORT LOGAN, COLO.  
N3937.5-W10500.7/5

1965  
PHOTOREVISED 1980  
DMA 4963 11 NE-SERIES V877

LIBRARY USE ONLY

OFFICE COPY  
FEB 12 1981  
MAP ROOM  
ARTHUR LAKES LIBRARY

C222  
s24  
U5