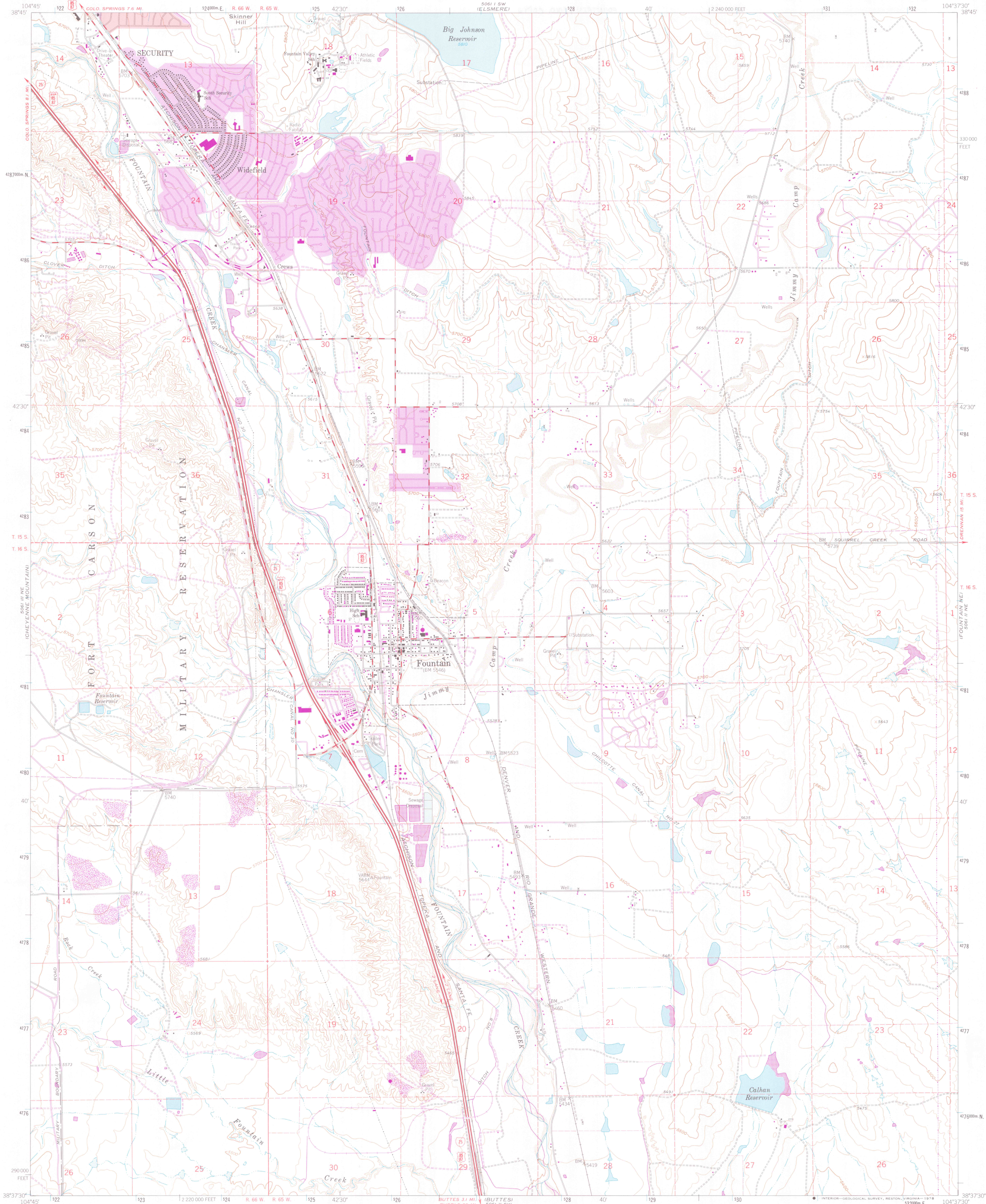


UNITED STATES
DEPARTMENT OF THE INTERIOR
GEOLOGICAL SURVEY

FOUNTAIN QUADRANGLE
COLORADO-EL PASO CO.
7.5 MINUTE SERIES (TOPOGRAPHIC)

copy 2
5061 SW (SUFFS)
CORRAL BLUFFS
GEOLOGY



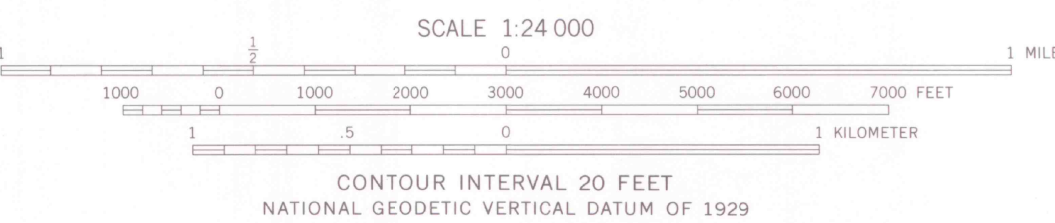
Mapped, edited, and published by the Geological Survey
in cooperation with the Corps of Engineers

Control by USGS and NOS/NOAA
Topography by photogrammetric methods from aerial photographs
taken 1947. Field checked 1948. Revised from aerial
photographs taken 1960. Field checked 1961

Polyconic projection. 1927 North American datum
10,000-foot grid based on Colorado coordinate system, central zone
1000 meter Universal Transverse Mercator grid ticks,
zone 13, shown in blue

Red tint indicates area in which only landmark buildings are shown
Fine red dashed lines indicate selected fence and field lines where
generally visible on aerial photographs. This information is unchecked

Revisions shown in purple compiled from aerial photographs
taken 1969 and 1976. This information not field checked
Purple tint indicates extension of urban areas



ROAD CLASSIFICATION
Heavy-duty ——— Light-duty ———
Medium-duty ——— Unimproved dirt ———
Interstate Route U.S. Route

TOPO CO 24000
FOUNTAIN, COLO.

N3837.5-W10437.5/7.5

1961
PHOTOREVISED 1969 AND 1976
AMS 5061 II NW-SERIES V877



MAP ROOM
ARTHUR LAKES LIBRARY
COLORADO SCHOOL OF MINES

OFFICE COPY

GEOLOGY

LIBRARY USE OF

copy 2