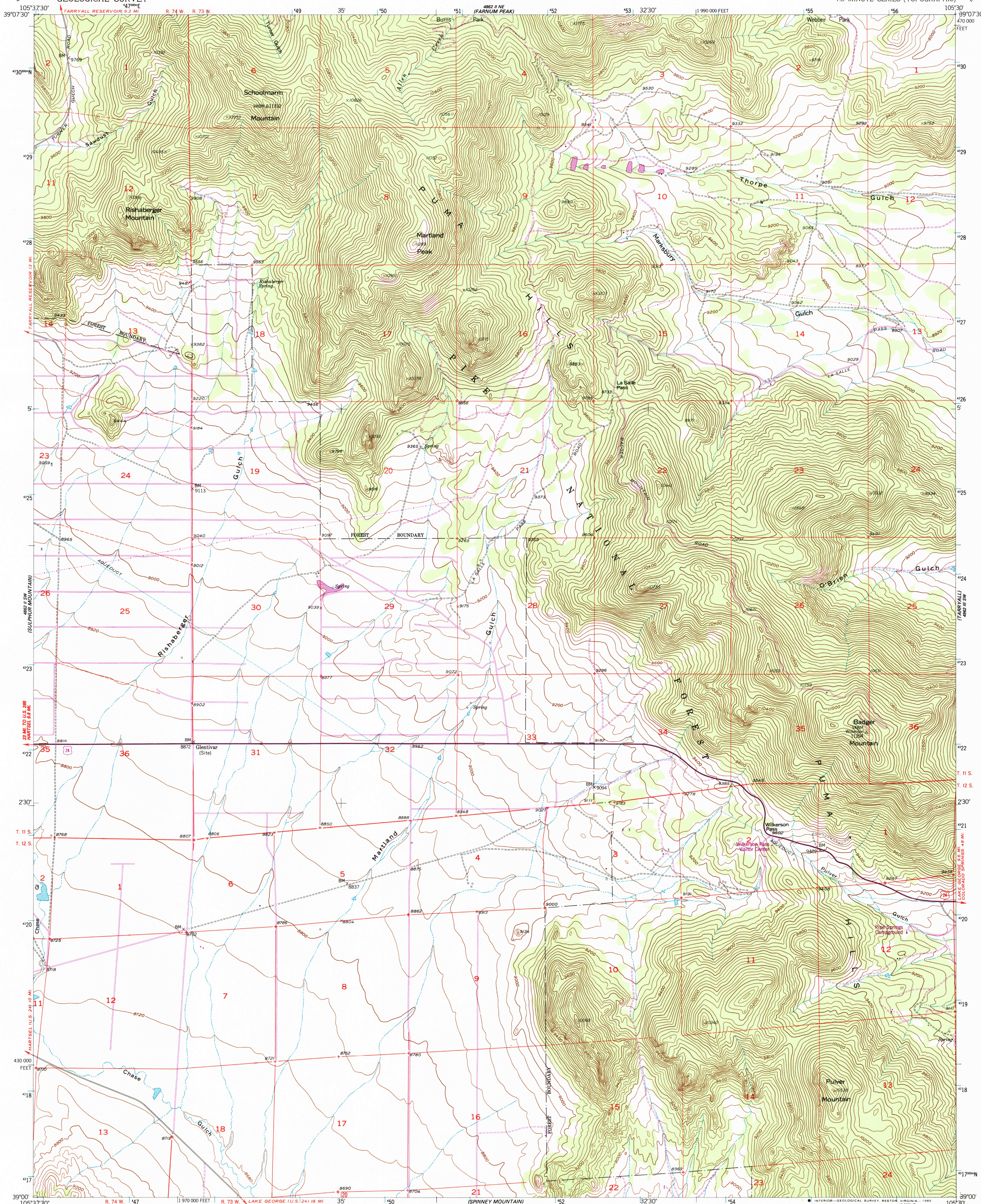


UNITED STATES
DEPARTMENT OF THE INTERIOR
GEOLOGICAL SURVEY

GLENTIVAR QUADRANGLE
COLORADO-PARK CO.
7.5 MINUTE SERIES (TOPOGRAPHIC)



Mapped, edited, and published by the Geological Survey as part of the Department of the Interior program for the development of the Missouri River Basin.

Control by USGS and NOS/NOAA

Topography from aerial photographs by multiplex methods

Aerial photographs taken 1952 and 1953. Field check 1956

Polyconic projection. 1927 North American Datum

10,000-foot grid based on Colorado coordinate system, central zone

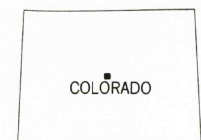
1000-meter Universal Transverse Mercator grid ticks, zone 13, shown in blue

Dashed land lines indicate approximate locations

To place on the predicted North American Datum 1983 move the projection lines 4 meters north and 49 meters east as shown by dashed corner ticks

There may be private inholdings within the boundaries of the National or State reservations shown on this map

THIS MAP COMPLIES WITH NATIONAL MAP ACCURACY STANDARDS
FOR SALE BY U. S. GEOLOGICAL SURVEY, DENVER, COLORADO 80225, OR RESTON, VIRGINIA 22092
A FOLDER DESCRIBING TOPOGRAPHIC MAPS AND SYMBOLS IS AVAILABLE ON REQUEST



QUADRANGLE LOCATION

ROAD CLASSIFICATION

Primary highway, hard surface	Light-duty road, hard or improved surface
Secondary highway, hard surface	Unimproved road
Interstate Route	U. S. Route
	State Route

GLENTIVAR, COLO.
39105-A5-TF-024
1956
PHOTOREVISED 1985
DMA 4862 II SE-SERIES V877