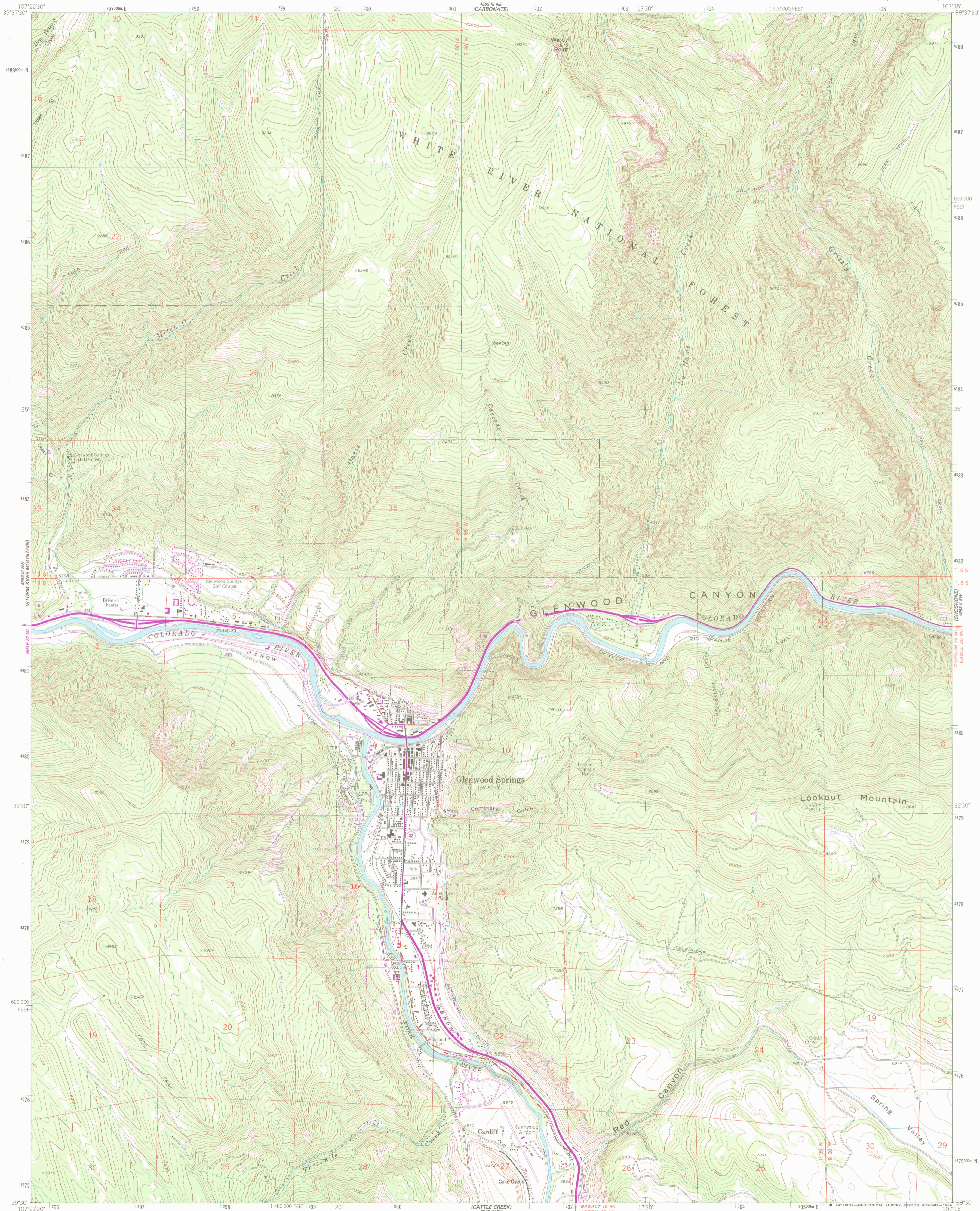


UNITED STATES
DEPARTMENT OF THE INTERIOR
GEOLOGICAL SURVEY

GLENWOOD SPRINGS QUADRANGLE
COLORADO—GARFIELD CO.
7.5 MINUTE SERIES (TOPOGRAPHIC)



Mapped, edited, and published by the Geological Survey

Control by USGS and NOS/NOAA

Topography by photogrammetric methods from aerial photographs taken 1960. Field checked 1961

Polyconic projection 1927 North American Datum
10,000-foot grid based on Colorado coordinate system, central zone
1000-meter Universal Transverse Mercator grid ticks,
zone 13, shown in blue

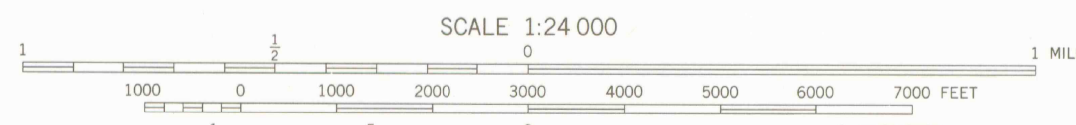
Fine red dashed lines indicate selected fence and field lines where
generally visible on aerial photographs. This information is unchecked

Where omitted, land lines have not been established

There may be private inholdings within the boundaries of
the National or State reservations shown on this map

To place on the predicted North American Datum 1983
move the projection lines 6 meters north and
53 meters east as shown by dashed corner ticks

UTM GRID AND 1982 MAGNETIC NORTH
DECLINATION AT CENTER OF SHEET

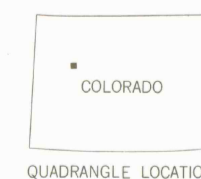


CONTOUR INTERVAL 40 FEET
DOTTED LINES REPRESENT 20-FOOT CONTOURS
NATIONAL GEODETIC VERTICAL DATUM OF 1929

THIS MAP COMPLIES WITH NATIONAL MAP ACCURACY STANDARDS
FOR SALE BY U. S. GEOLOGICAL SURVEY, DENVER, COLORADO 80225, OR RESTON, VIRGINIA 22092
A FOLDER DESCRIBING TOPOGRAPHIC MAPS AND SYMBOLS IS AVAILABLE ON REQUEST

Revisions shown in purple compiled from aerial photographs
taken 1979 and other source data. This information not
field checked. Map edited 1982

ROAD CLASSIFICATION
Primary highway, hard surface
Secondary highway, hard surface
Interstate Route
U. S. Route
State Route
Light-duty road, hard or improved surface
Unimproved road



GLENWOOD SPRINGS, COLO.

39107-E3-TF-024

1961
PHOTOREVISED 1982
DMA 4563 III SE-SERIES V877

LIBRARY USE ONLY