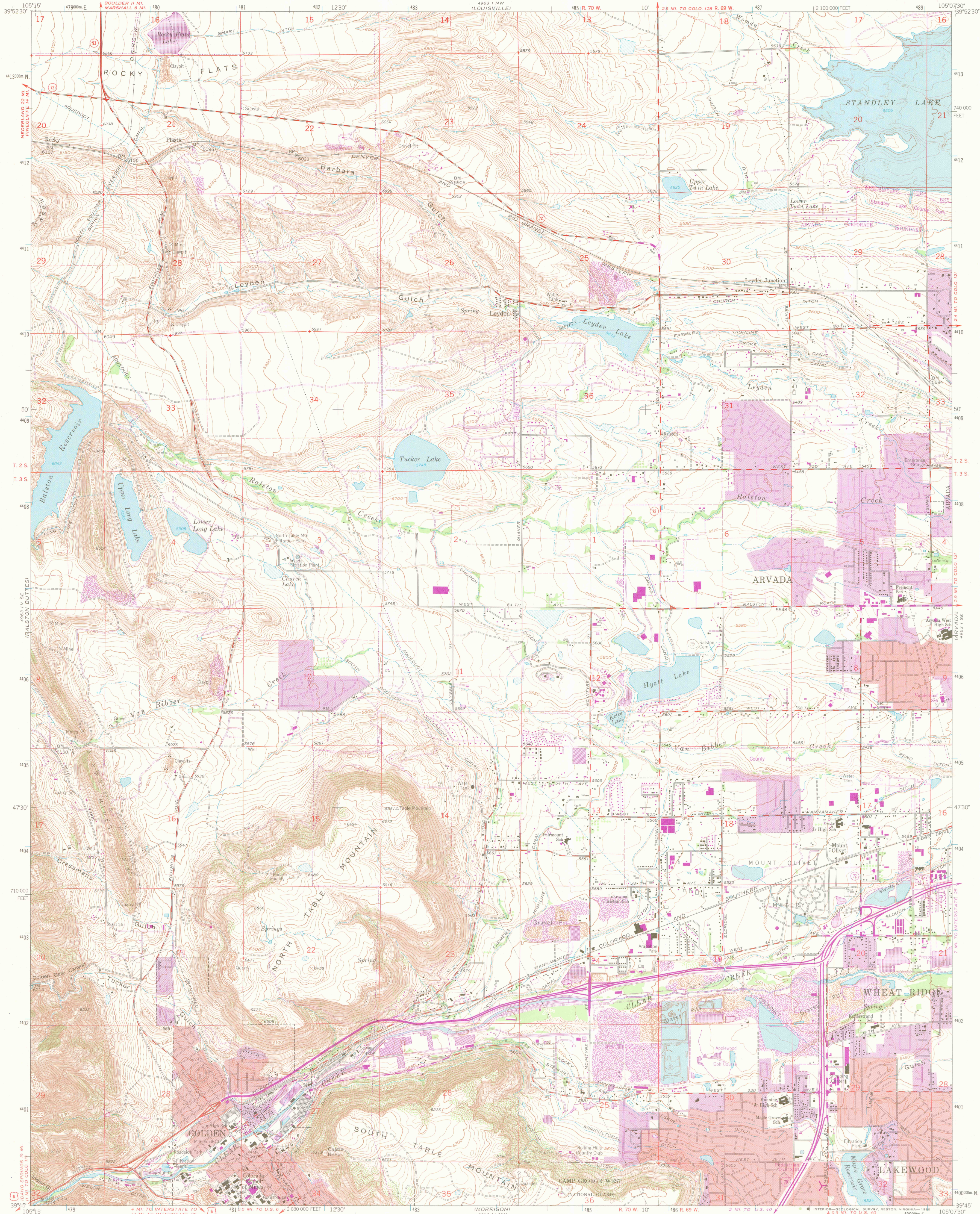


UNITED STATES  
DEPARTMENT OF THE INTERIOR  
GEOLOGICAL SURVEY

GOLDEN QUADRANGLE  
COLORADO-JEFFERSON CO.  
7.5 MINUTE SERIES (TOPOGRAPHIC)



Mapped, edited, and published by the Geological Survey  
Control by USGS and NOS/NOAA

Topography by photogrammetric methods from aerial  
photographs taken 1954 and 1955. Field checked 1957  
Revised from aerial photographs taken 1964  
Field checked 1965

Polycyclic projection. 1927 North American datum  
10,000-foot grid based on Colorado coordinate system, central zone  
1000-meter Universal Transverse Mercator grid ticks,  
zone 13, shown in blue

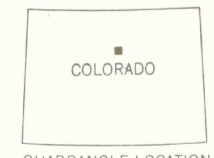
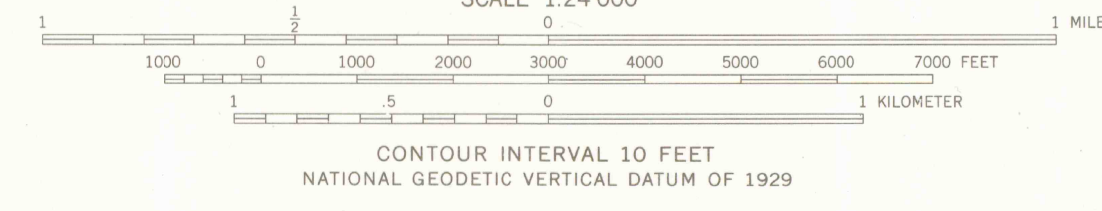
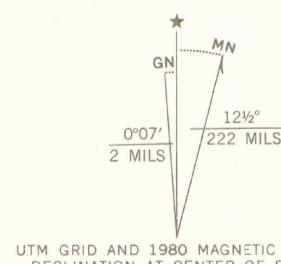
Red tint indicates areas in which only landmark buildings are shown

Fine red dashed lines indicate selected fence lines

To place on the predicted North American Datum 1983  
move the projection lines 5 meters north and  
48 meters east as shown by dashed corner ticks

Revisions shown in purple compiled from aerial photographs  
taken 1978 and other source data. This information not  
field checked. Map edited 1980

Purple tint indicates extension of urban areas



ROAD CLASSIFICATION  
Heavy-duty ——— Light-duty ———  
Medium-duty ——— Unimproved dirt ———  
U.S. Route ——— State Route ———  
Interstate Route ———

GOLDEN, COLO.  
N3945-W10507.5/7.5

1965  
PHOTOREVISED 1980  
DMA 4963 1 SW-SERIES V877

LIBRARY USE ONLY

FEB 12 1981  
MAP ROOM  
ARTHUR LAKES LIBRARY