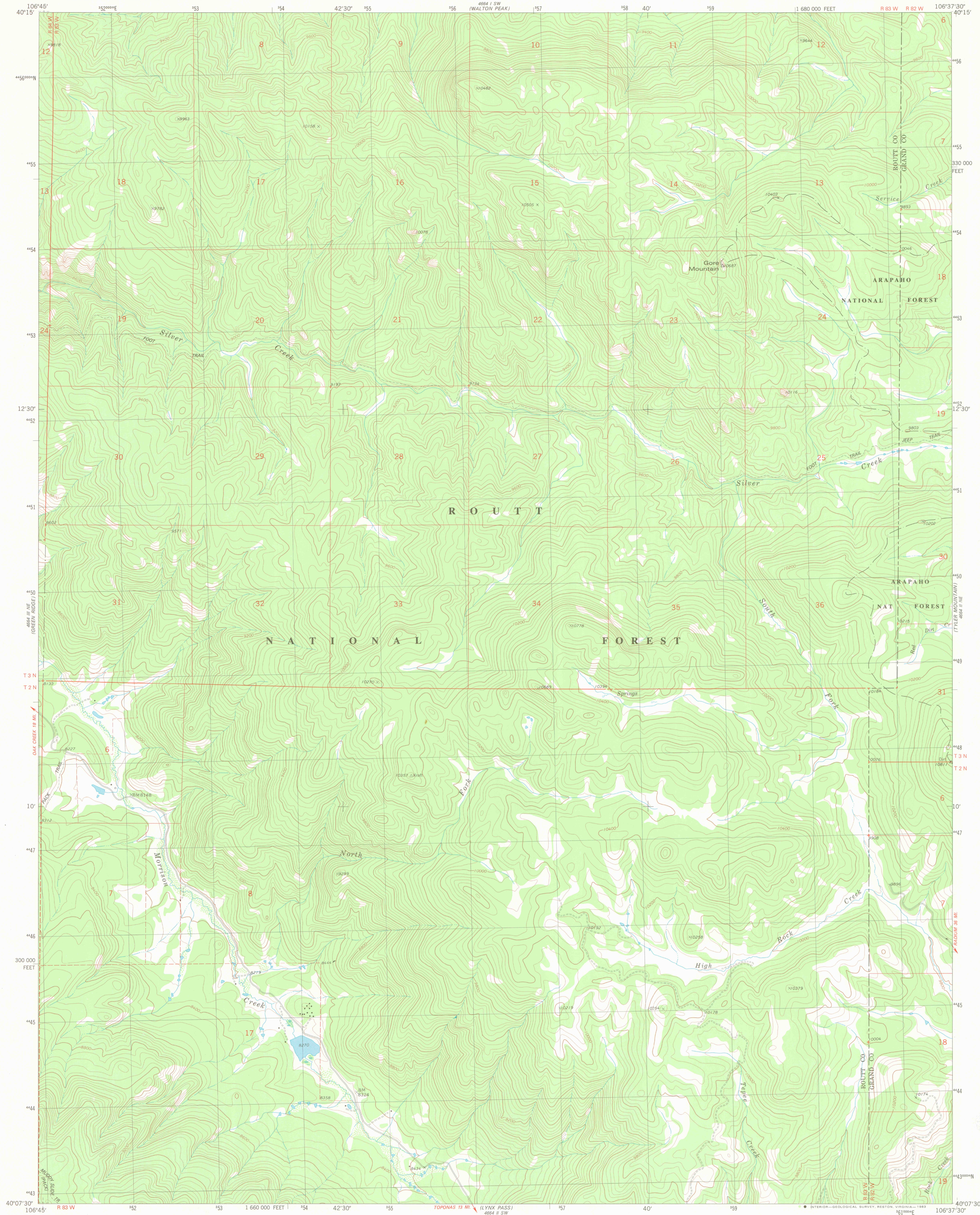
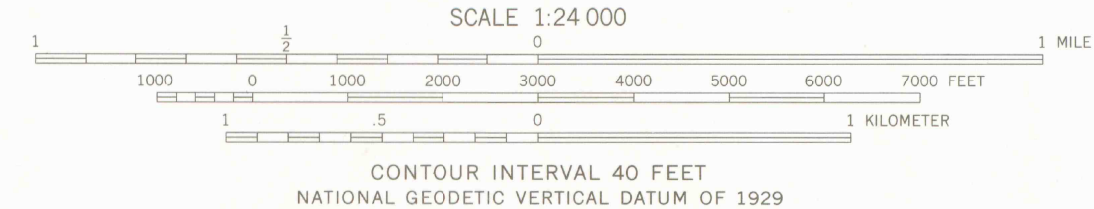
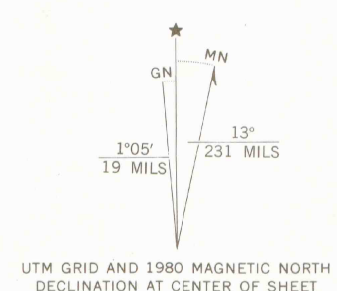


UNITED STATES
DEPARTMENT OF THE INTERIOR
GEOLOGICAL SURVEY

GORE MOUNTAIN QUADRANGLE
COLORADO
7.5 MINUTE SERIES (TOPOGRAPHIC)
NW/4 GORE PASS 15' QUADRANGLE



Mapped, edited, and published by the Geological Survey
Control by USGS and NOS/NOAA
Topography by photogrammetric methods from aerial photographs
taken 1975. Field checked 1976. Map edited 1980
Projection and 10,000-foot grid ticks: Colorado
coordinate system, north zone (Lambert conformal conic)
1000-meter Universal Transverse Mercator grid, zone 13
1927 North American datum
To place on the predicted North American Datum 1983
move the projection lines 5 meters north and
51 meters east as shown by dashed corner ticks
Fine red dashed lines indicate selected fence lines
Certain land lines are omitted because of insufficient data
There may be private inholdings within the boundaries of the
National or State reservations shown on this map



ROAD CLASSIFICATION
Primary highway, hard surface
Secondary highway, hard surface
Unimproved road
Interstate Route
U. S. Route
State Route

GORE MOUNTAIN, COLO.
NW/4 GORE PASS 15' QUADRANGLE
N4007.5-W10637.5/7.5
1980
DMA 4664 II NW-SERIES V877

THIS MAP COMPLIES WITH NATIONAL MAP ACCURACY STANDARDS
FOR SALE BY U. S. GEOLOGICAL SURVEY, DENVER, COLORADO 80225, OR RESTON, VIRGINIA 22092
A FOLDER DESCRIBING TOPOGRAPHIC MAPS AND SYMBOLS IS AVAILABLE ON REQUEST

OFFICE COPY
LIBRARY USE ONLY

G 3700
s24
s4
MAP ROOM