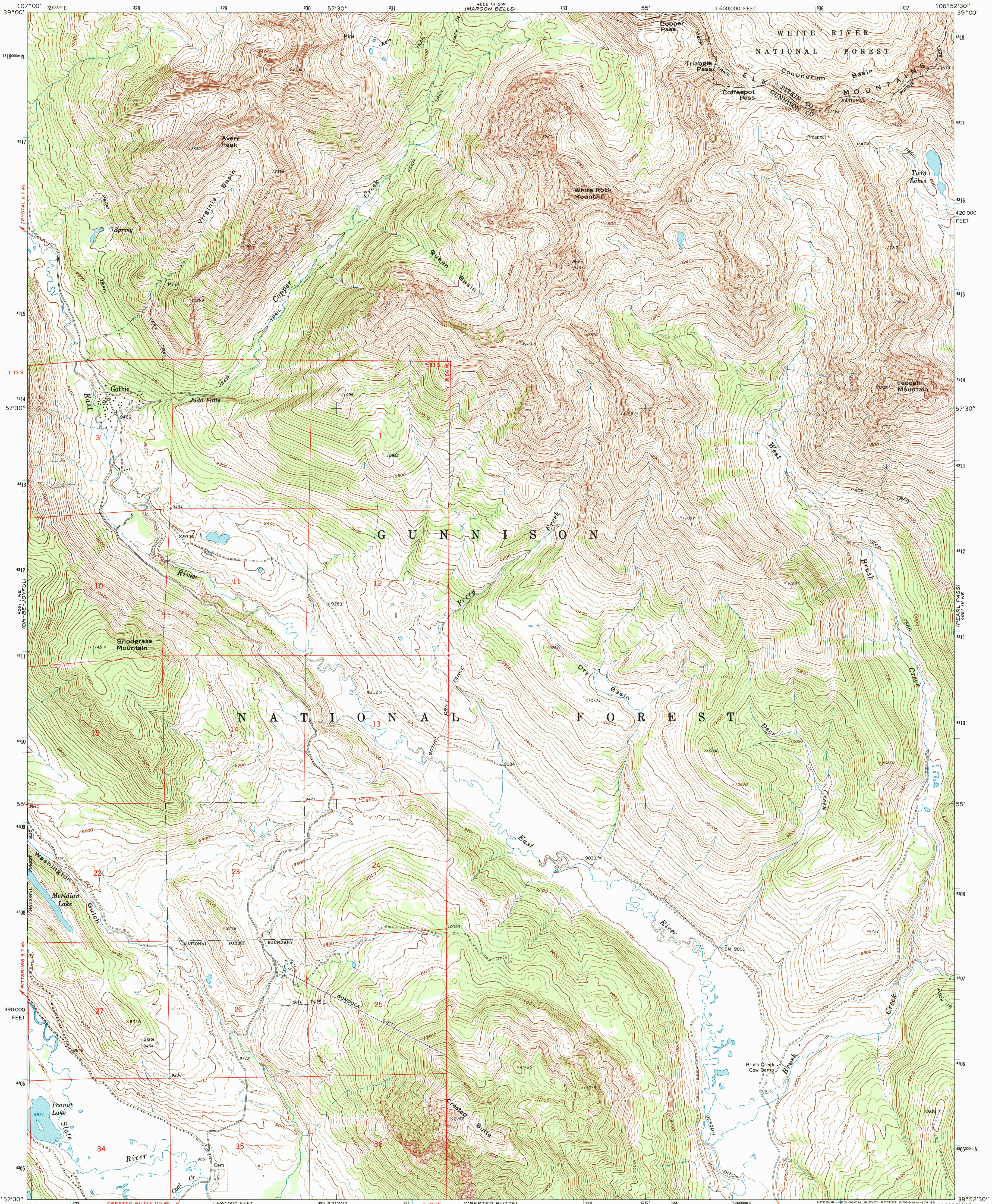
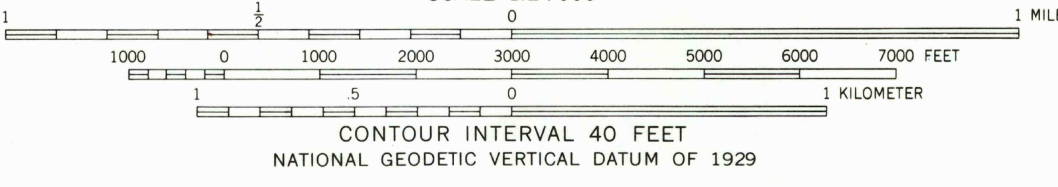
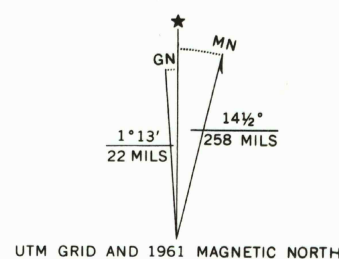


UNITED STATES
DEPARTMENT OF THE INTERIOR
GEOLOGICAL SURVEY

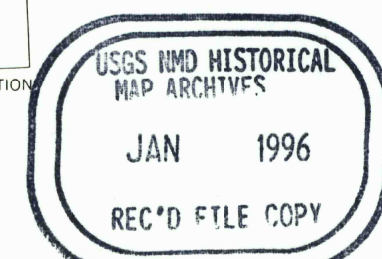
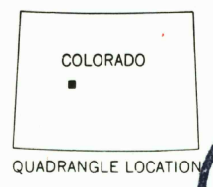
GOthic QUADRANGLE
COLORADO
7.5 MINUTE SERIES (TOPOGRAPHIC)
NW/4 CRESTED BUTTE 15' QUADRANGLE



Mapped, edited, and published by the Geological Survey
Control by USGS and USC&GS
Topography by photogrammetric methods from aerial
photographs taken 1958. Field checked 1961
Polyconic projection. 1927 North American datum.
10,000-foot grid based on Colorado coordinate system, central zone
1000-meter Universal Transverse Mercator grid ticks,
zone 13, shown in blue
Fine red dashed lines indicate selected fence and field lines where
generally visible on aerial photographs. This information is unchecked
Certain land lines are omitted because of insufficient data



THIS MAP COMPLIES WITH NATIONAL MAP ACCURACY STANDARDS
FOR SALE BY U. S. GEOLOGICAL SURVEY, DENVER, COLORADO 80225, OR RESTON, VIRGINIA 22092
A FOLDER DESCRIBING TOPOGRAPHIC MAPS AND SYMBOLS IS AVAILABLE ON REQUEST



ROAD CLASSIFICATION
Light duty ————— Unimproved dirt =

GOthic, COLO.
NW/4 CRESTED BUTTE 15' QUADRANGLE
N3852.5-W10652.5/7.5
1961
AMS 4661 IV NW-SERIES V877

