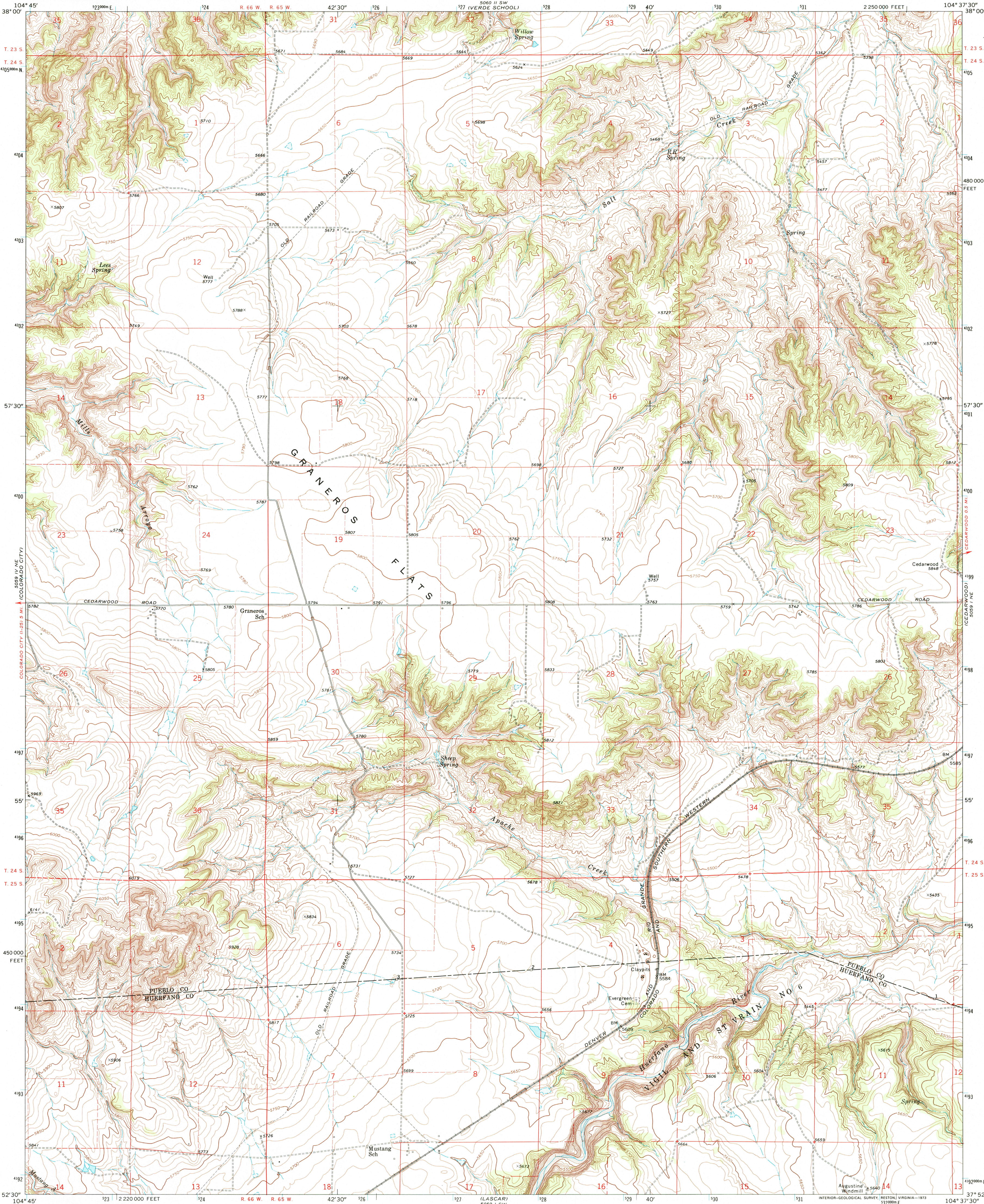




U.S. DEPARTMENT OF THE INTERIOR
U.S. GEOLOGICAL SURVEY

GRANEROS FLATS QUADRANGLE
COLORADO
7.5 MINUTE SERIES (TOPOGRAPHIC)



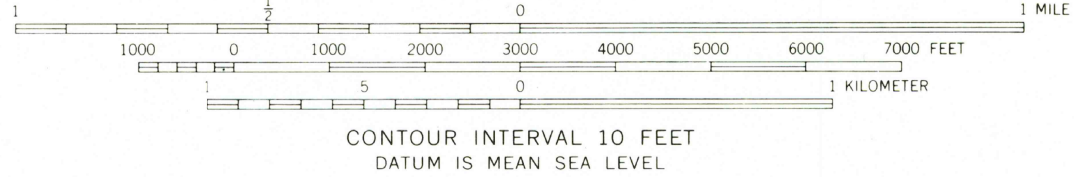
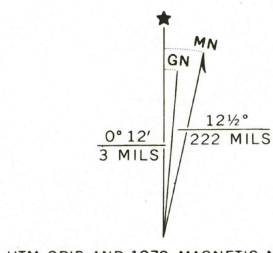
Mapped, edited, and published by the Geological Survey

Control by USGS and USC&GS

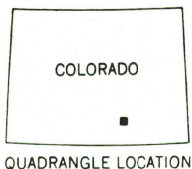
Topography by photogrammetric methods from aerial photographs taken 1969. Field checked 1970

Projection and 10,000-foot grid ticks: Colorado coordinate system, south zone (Lambert conformal conic) 1000-meter Universal Transverse Mercator grid ticks, zone 13, shown in blue. 1927 North American datum

Fine red dashed lines indicate selected fence lines



CONTOUR INTERVAL 10 FEET
DATUM IS MEAN SEA LEVEL



ROAD CLASSIFICATION
Primary highway, hard surface
Secondary highway, hard surface
Interstate Route
U.S. Route
State Route
Light-duty road, hard or improved surface
Unimproved road

RECEIVED

MAY 31 1999

GRANEROS FLATS, COLO.
N 3752.5-W 10437.5/7.5

USGS NMD
HISTORICAL MAP ARCHIVES

1970

AMS 5059 1 NW-SERIES V877

THIS MAP COMPLIES WITH NATIONAL MAP ACCURACY STANDARDS
FOR SALE BY U.S. GEOLOGICAL SURVEY, P.O. BOX 25286, DENVER, COLORADO 80225
A FOLDER DESCRIBING TOPOGRAPHIC MAPS AND SYMBOLS IS AVAILABLE ON REQUEST