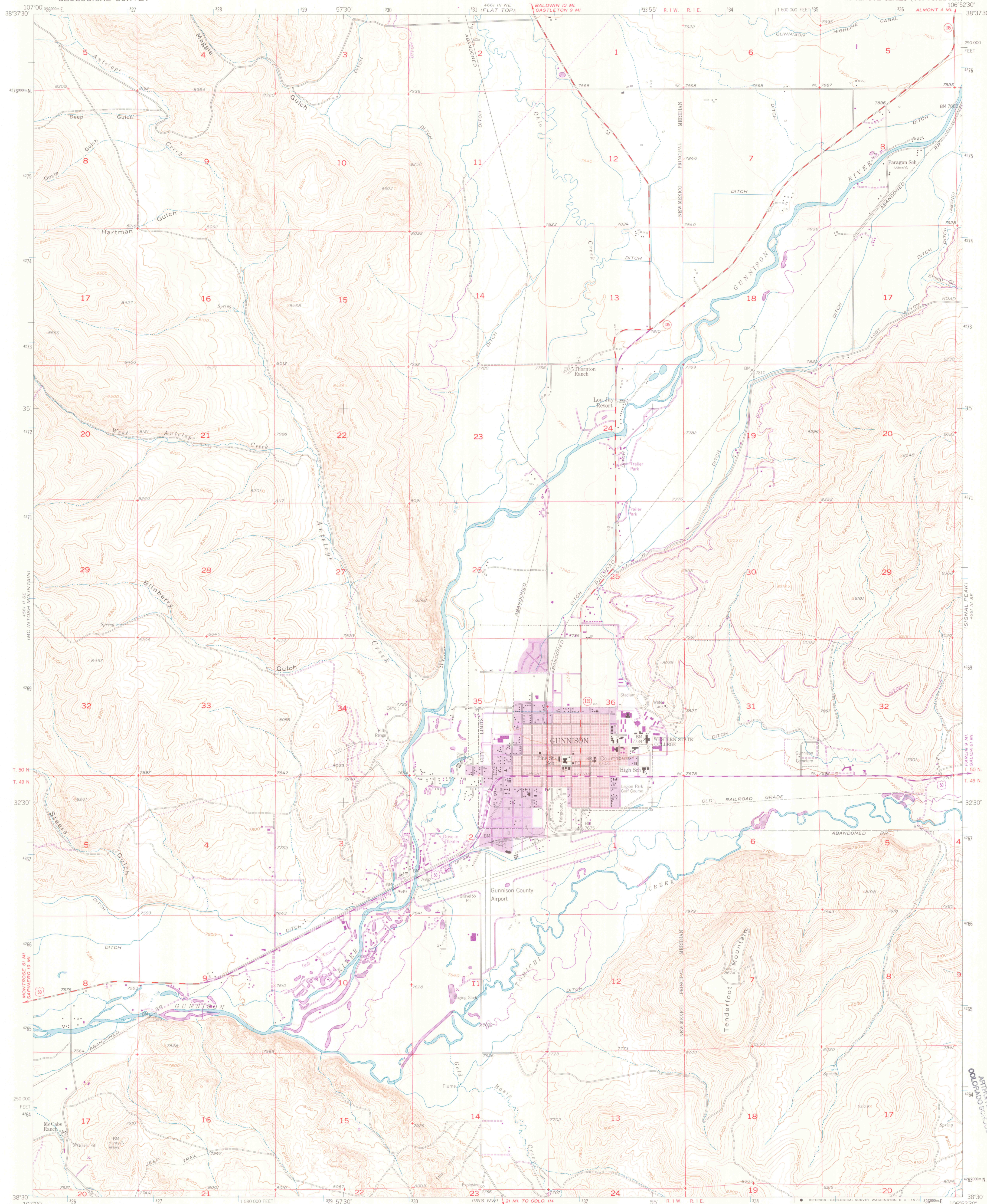
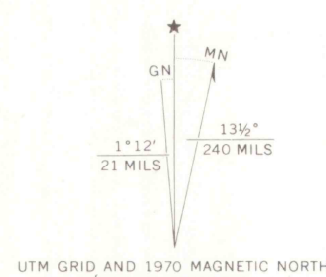


UNITED STATES
DEPARTMENT OF THE INTERIOR
GEOLOGICAL SURVEY

GUNNISON QUADRANGLE
COLORADO-GUNNISON CO.
7.5 MINUTE SERIES (TOPOGRAPHIC)



Mapped, edited, and published by the Geological Survey
Control by USGS and USC&GS
Topography by photogrammetric methods from aerial photographs
taken 1950. Field check 1954
Polyconic projection. 1927 North American datum
10,000-foot grid based on Colorado coordinate system, central zone
1000-meter Universal Transverse Mercator grid ticks,
zone 13, shown in blue
Red tint indicates areas in which only landmark buildings are shown
Dashed land lines indicate approximate locations
Revisions shown in purple compiled from aerial photographs
taken 1970. This information not checked
Purple tint indicates extension of urban areas



SCALE 1:24,000
1 1000 0 1000 2000 3000 4000 5000 6000 7000 FEET
1 5 10 KILOMETER
CONTOUR INTERVAL 20 FEET
DATUM IS MEAN SEA LEVEL
THIS MAP COMPLIES WITH NATIONAL MAP ACCURACY STANDARDS
FOR SALE BY U.S. GEOLOGICAL SURVEY, DENVER, COLORADO 80225, OR WASHINGTON, D.C. 20242
A FOLDER DESCRIBING TOPOGRAPHIC MAPS AND SYMBOLS IS AVAILABLE ON REQUEST

ROAD CLASSIFICATION
Heavy-duty ————
Medium-duty ————
U.S. Route ————
State Route ————
Light-duty ————
Unimproved dirt ————
GUNNISON, COLO.
N3830—W10652.5/7.5
1954
PHOTOREVISED 1970
AMS 4661 III SW—SERIES V877

JUN 1995
U.S. GEOLOGICAL SURVEY
ATLANTIC REGION
COLORADO SCHOOL OF MINES
OFFICE COPY
3701
C222
824
US