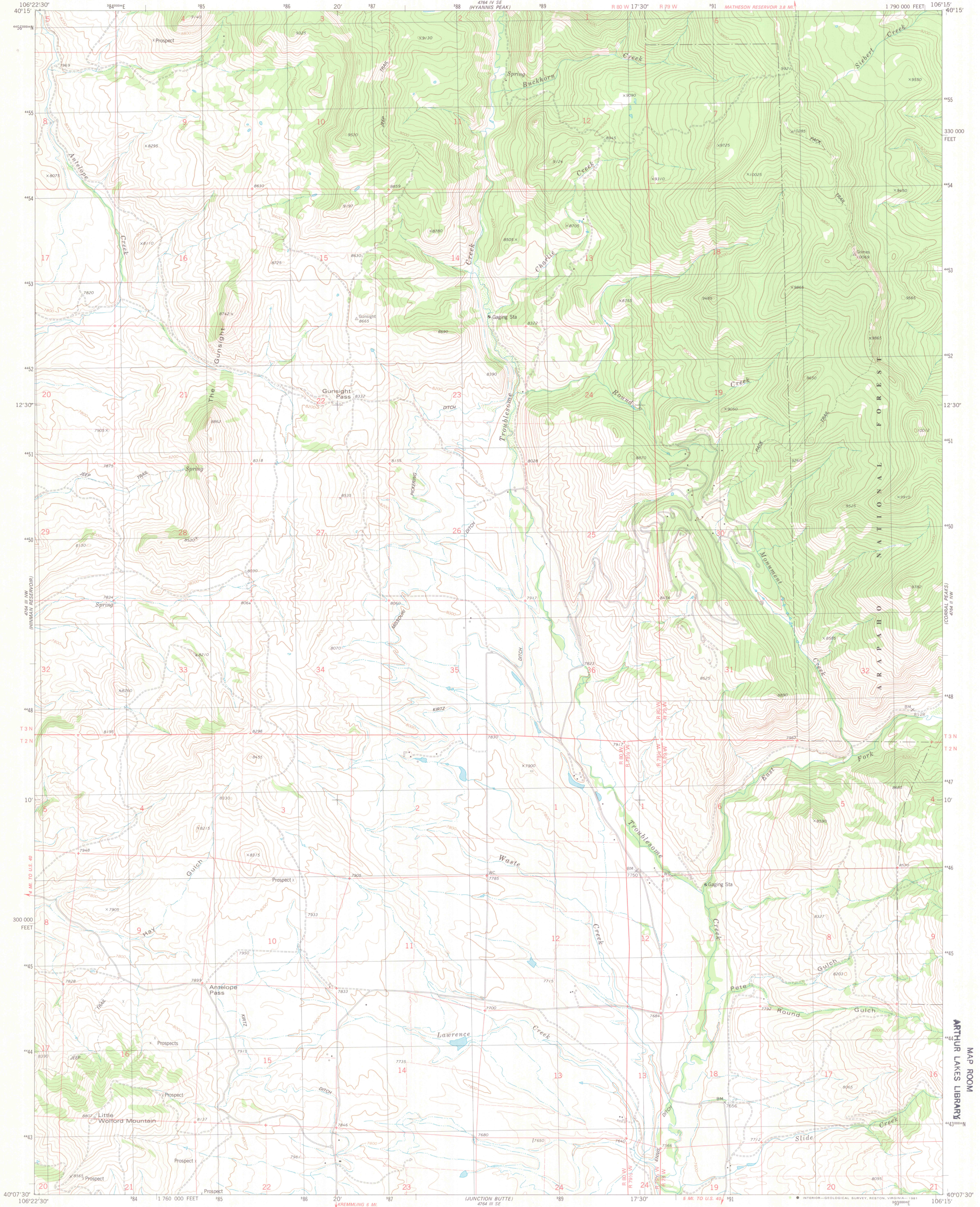


UNITED STATES  
DEPARTMENT OF THE INTERIOR  
GEOLOGICAL SURVEY

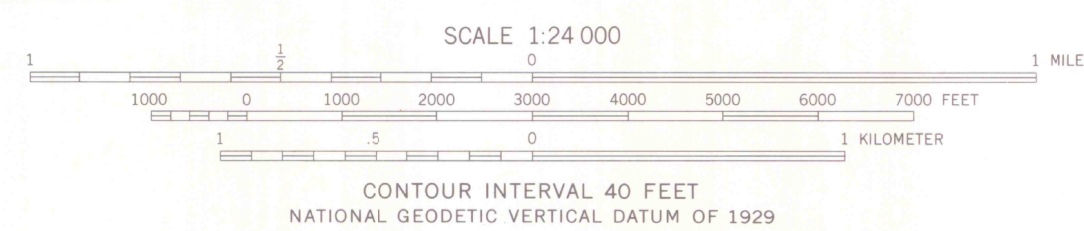
GUNSIGHT PASS QUADRANGLE  
COLORADO—GRAND CO.  
7.5 MINUTE SERIES (TOPOGRAPHIC)  
NE 1/4 KREMMLING 15' QUADRANGLE

594 1 SW  
(PARKVIEW MOUNTAIN)



Mapped, edited, and published by the Geological Survey

Control by USGS and NOS/NOAA  
Topography by photogrammetric methods from aerial photographs taken 1975. Field checked 1976. Map edited 1980  
Projection and 10,000-foot grid ticks: Colorado coordinate system, north zone (Lambert conformal conic)  
1000-meter Universal Transverse Mercator grid, zone 13  
1927 North American datum  
To place on the predicted North American Datum 1983 move the projection lines 6 meters north and 51 meters east as shown by dashed corner ticks  
Fine red dashed lines indicate selected fence lines  
Certain land lines are omitted because of insufficient data  
There may be private inholdings within the boundaries of the National or State reservations shown on this map



ROAD CLASSIFICATION  
Primary highway, hard surface  
Secondary highway, hard surface  
Unimproved road  
Interstate Route  
U.S. Route  
State Route  
Light-duty road, hard or improved surface  
Unimproved road

GUNSIGHT PASS, COLO.  
NE 1/4 KREMMLING 15' QUADRANGLE  
N4007.5-W10615.7.5

1980

DMA 4764 III NE—SERIES V877

ARTHUR LAKES LIBRARY

JUL 14 1981  
MAP ROOM



OFFICE COPY

LIBRARY USE ONLY