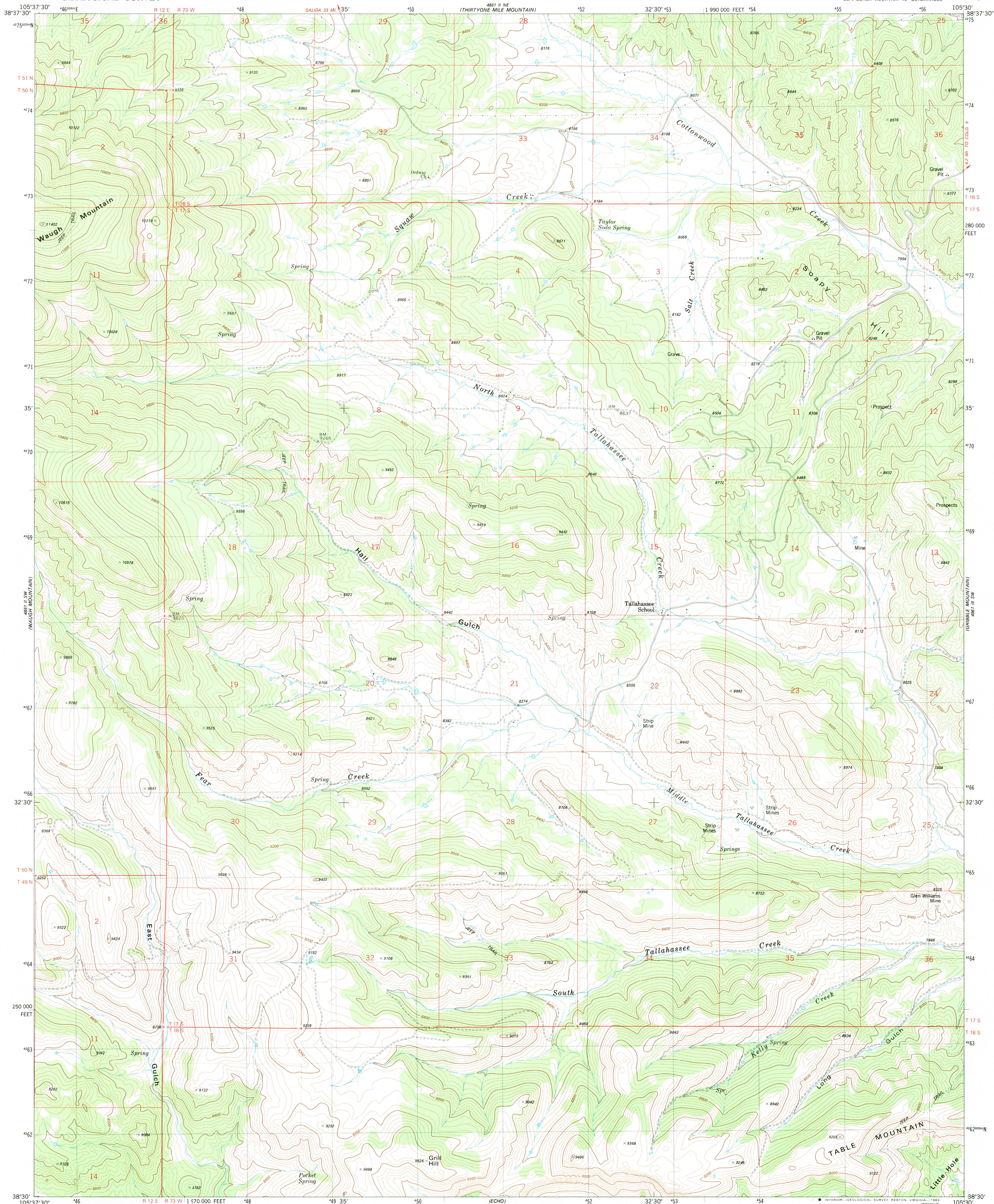


UNITED STATES
DEPARTMENT OF THE INTERIOR
GEOLOGICAL SURVEY

HALL GULCH QUADRANGLE
COLORADO-FREMONT CO.
7.5 MINUTE SERIES (TOPOGRAPHIC)
SE 1/4 BLACK MOUNTAIN 15' QUADRANGLE



Mapped, edited, and published by the Geological Survey

Control by USGS and NOS/NOAA

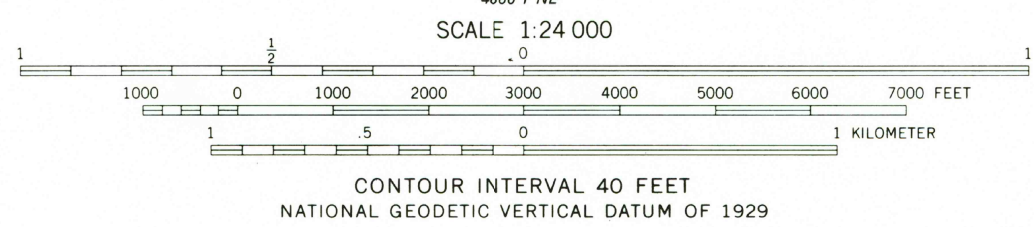
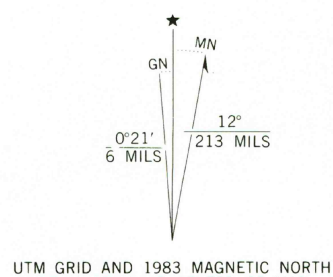
Topography by photogrammetric methods from aerial photographs taken 1975. Field checked 1976. Map edited 1983

Projection and 10,000-foot grid ticks: Colorado coordinate system, central zone (Lambert conformal conic) 1000-meter Universal Transverse Mercator grid, zone 13 1927 North American datum

To place on the predicted North American Datum 1983 move the projection lines 4 meters north and 49 meters east as shown by dashed corner ticks

Land lines are omitted in large areas of tracts or where not established

Fine red dashed lines indicate selected fence lines



ROAD CLASSIFICATION	
Primary highway, hard surface	Light-duty road, hard or improved surface
Secondary highway, hard surface	Unimproved road
Interstate Route	U. S. Route
	State Route

HALL GULCH, COLO.
SE 1/4 BLACK MOUNTAIN 15' QUADRANGLE
N3830-W10530/7.5

1983

DMA 4861 II SE-SERIES V877