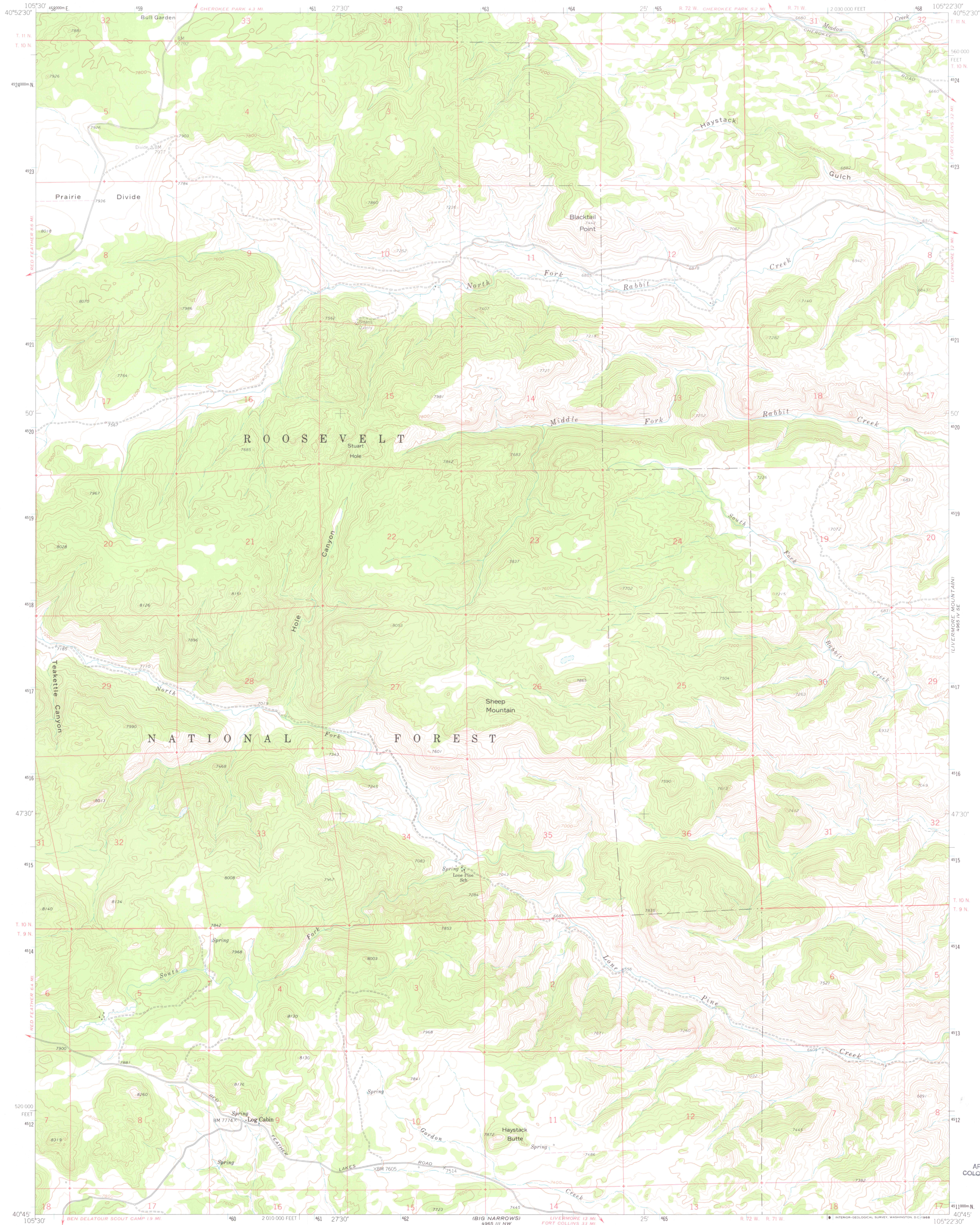


UNITED STATES  
DEPARTMENT OF THE INTERIOR  
GEOLOGICAL SURVEY

HAYSTACK GULCH QUADRANGLE  
COLORADO-LARIMER CO.  
7.5 MINUTE SERIES (TOPOGRAPHIC)



Mapped, edited, and published by the Geological Survey as part of the Department of the Interior program for the development of the Missouri River Basin.

Control by USGS and USC&GS

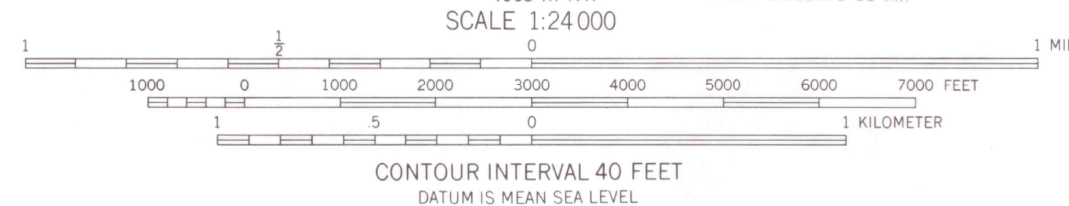
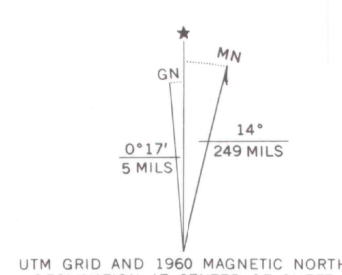
Topography by photogrammetric methods from aerial photographs taken 1958. Field checked 1960.

Polyconic projection. 1927 North American datum. 10,000-foot grid based on Colorado coordinate system, north zone.

1000-meter Universal Transverse Mercator grid ticks, zone 13, shown in blue.

Fine red dashed lines indicate selected fence and field lines where generally visible on aerial photographs.

This information is unchecked.



THIS MAP COMPLIES WITH NATIONAL MAP ACCURACY STANDARDS  
FOR SALE BY U. S. GEOLOGICAL SURVEY, DENVER, COLORADO 80225 OR WASHINGTON, D. C. 20242  
A FOLDER DESCRIBING TOPOGRAPHIC MAPS AND SYMBOLS IS AVAILABLE ON REQUEST



OFFICE COPY  
LIBRARY USE ONLY

HAYSTACK GULCH, COLO.  
N4045-W10522.5/7.5



1960  
AMS 4965 IV SW-SERIES V877

JAN 15 1998  
MAP ROOM  
ARTHUR LAKES LIBRARY  
COLORADO SCHOOL OF MINES

G 3700  
24  
24  
MAP ROOM