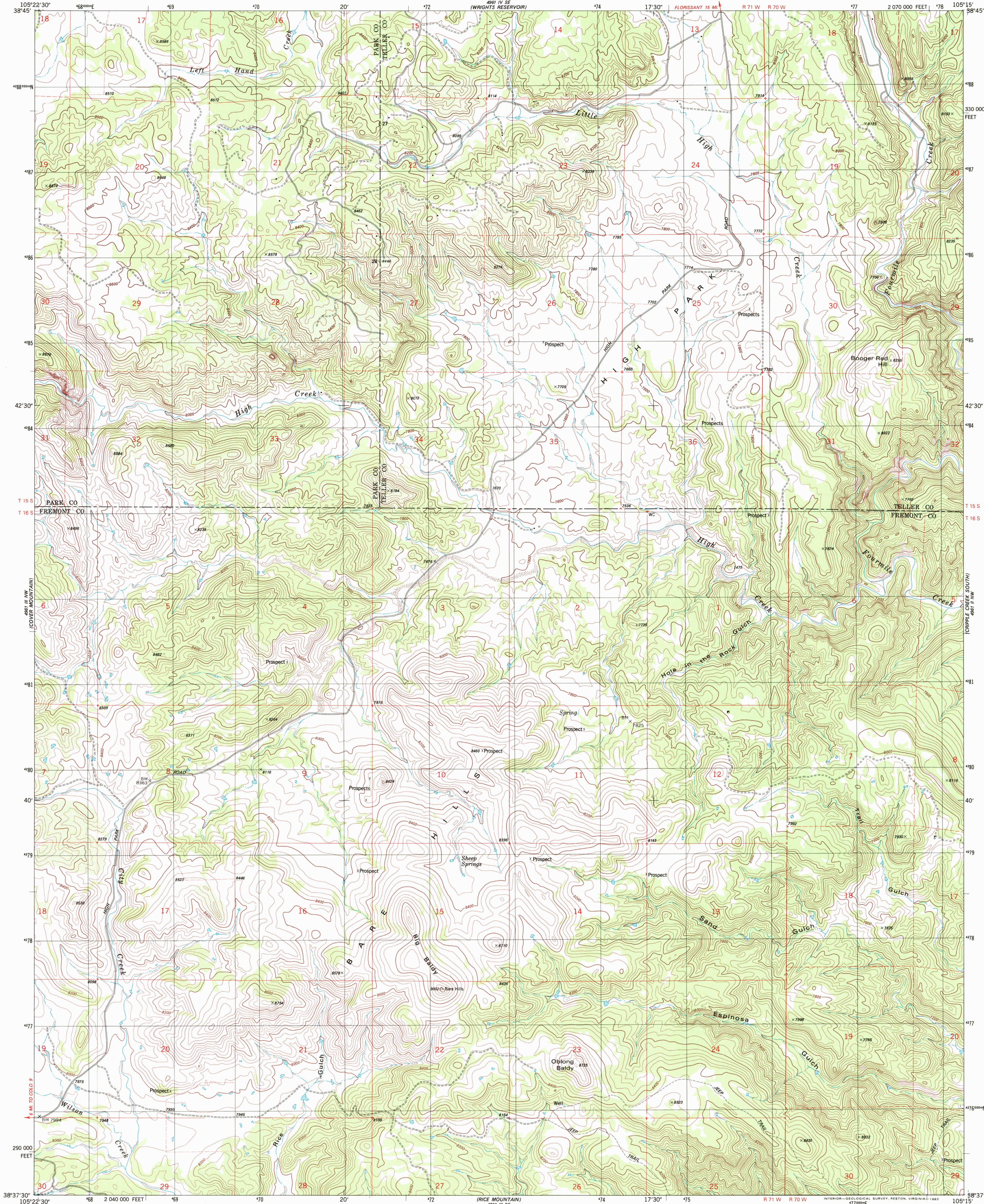


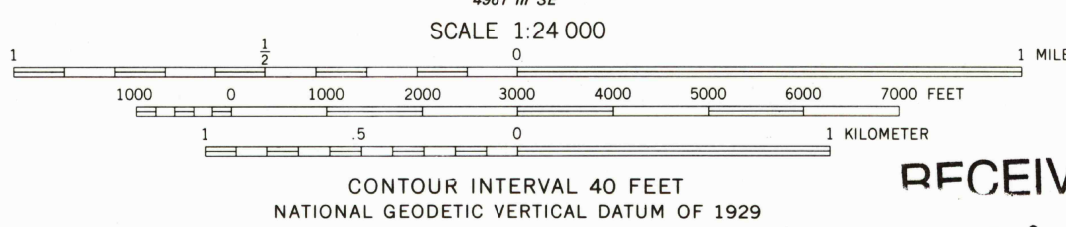
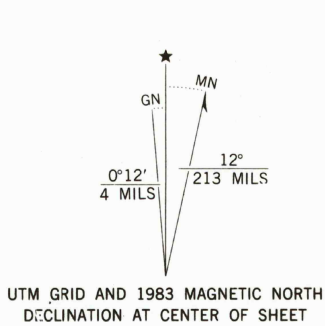


U.S. DEPARTMENT OF THE INTERIOR
U.S. GEOLOGICAL SURVEY

HIGH PARK QUADRANGLE
COLORADO
7.5 MINUTE SERIES (TOPOGRAPHIC)
NE 1/4 COVER MOUNTAIN 15' QUADRANGLE



Mapped, edited, and published by the Geological Survey
Control by USGS and NOS/NOAA
Topography by photogrammetric methods from aerial photographs taken 1975. Field checked 1976. Map edited 1983
Projection and 10,000-foot grid ticks: Colorado coordinate system, central zone (Lambert conformal conic) 1000-meter Universal Transverse Mercator grid, zone 13 1927 North American datum
To place on the predicted North American Datum 1983 move the projection lines 4 meters north and 49 meters east as shown by dashed corner ticks
Fine red dashed lines indicate selected fence lines



RECEIVED
JUN 3 0 2002



ROAD CLASSIFICATION
Primary highway, hard surface
Secondary highway, hard surface
Light-duty road, hard or improved surface
Unimproved road
Interstate Route
U.S. Route
State Route

HIGH PARK, COLO.
NE 1/4 COVER MOUNTAIN 15' QUADRANGLE
N3837.5-W10515/7.5

1983

DMA 4961 III NE-SERIES V877

FOR SALE BY U.S. GEOLOGICAL SURVEY
P.O. BOX 25286, DENVER, COLORADO 80225
A FOLDER DESCRIBING TOPOGRAPHIC MAPS AND SYMBOLS IS AVAILABLE ON REQUEST

