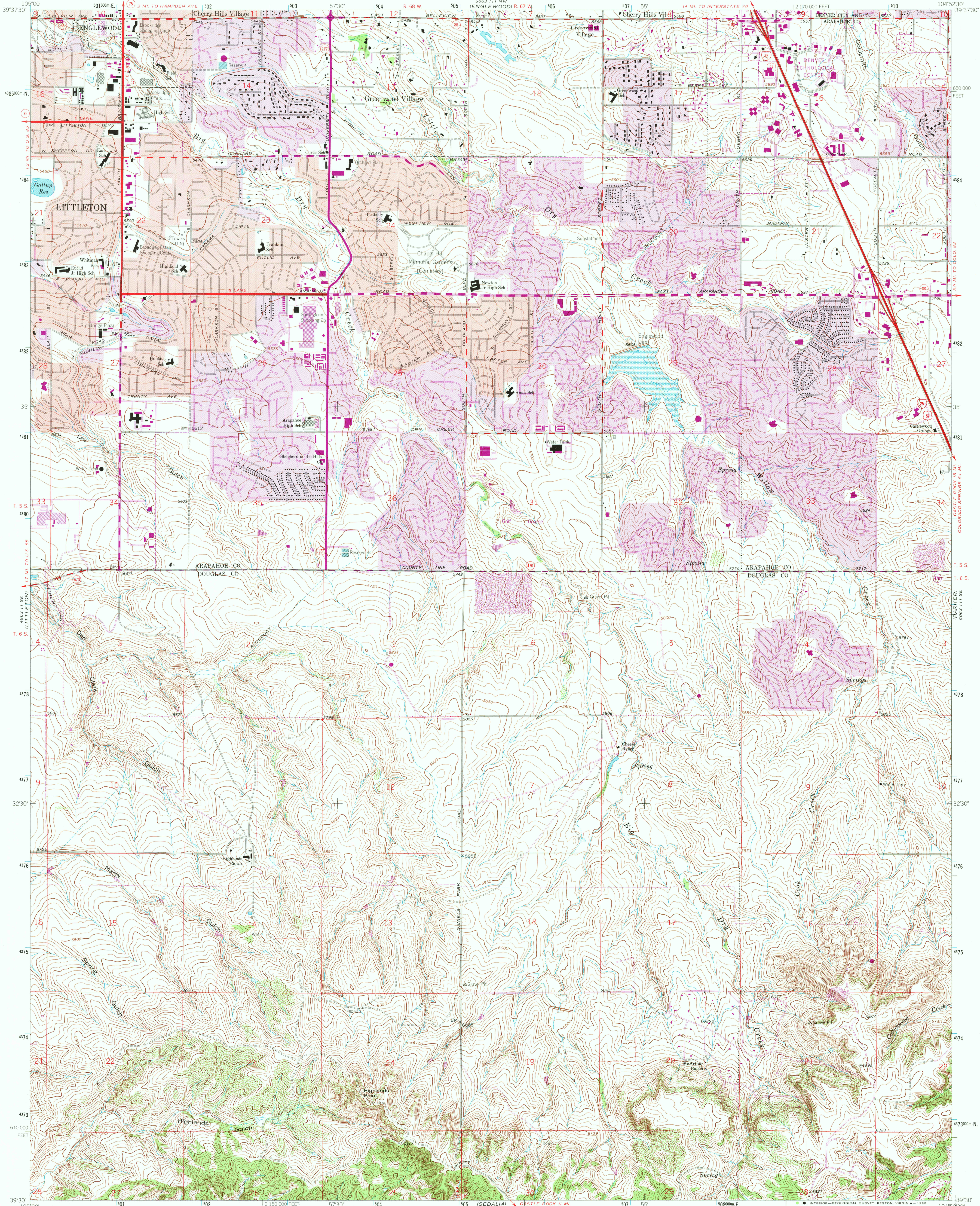


UNITED STATES
DEPARTMENT OF THE INTERIOR
GEOLOGICAL SURVEY

HIGHLANDS RANCH QUADRANGLE
COLORADO
7.5 MINUTE SERIES (TOPOGRAPHIC)



Mapped, edited, and published by the Geological Survey
Control by USGS and NOS/NOAA

Topography by photogrammetric methods from aerial photographs
taken 1964. Field checked 1965. Supersedes map dated 1957

Polyconic projection. 1927 North American datum
10,000-foot grid based on Colorado coordinate system, central zone
1000-meter Universal Transverse Mercator grid ticks,
zone 13, shown in blue

Red tint indicates areas in which only landmark buildings are shown

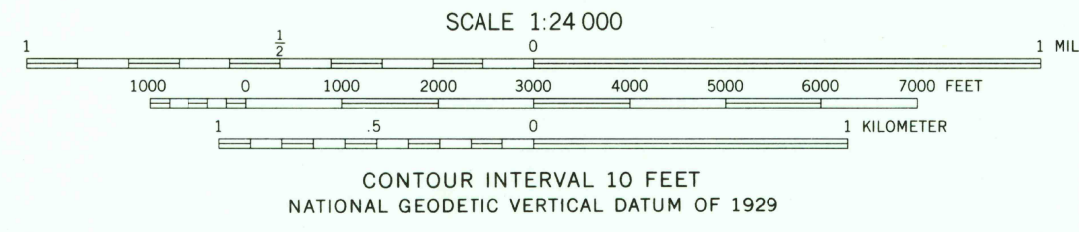
Areas covered by dashed light-blue pattern are subject
to controlled inundation

Fine red dashed lines indicate selected fence lines

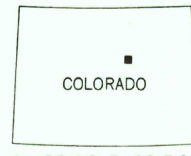
To place on the predicted North American Datum 1983
move the projection lines 5 meters north and
47 meters east as shown by dashed corner ticks

Revisions shown in purple compiled from aerial photographs
taken 1978 and other source data. This information not
field checked. Map edited 1980

Purple tint indicates extension of urban areas



ROAD CLASSIFICATION		
Heavy-duty	Light-duty	
Medium-duty	Unimproved dirt	
Interstate Route	U.S. Route	State Route



HIGHLANDS RANCH, COLO.
N3930 - W10452.5/7.5

USGS
Historical File
Topographic Division

1965
PHOTOREVISED 1980
DMA 5063 111 SW-SERIES V877

THIS MAP COMPLIES WITH NATIONAL MAP ACCURACY STANDARDS
FOR SALE BY U. S. GEOLOGICAL SURVEY, DENVER, COLORADO 80225, OR RESTON, VIRGINIA 22092
A FOLDER DESCRIBING TOPOGRAPHIC MAPS AND SYMBOLS IS AVAILABLE ON REQUEST

3650
FEB 3 1981