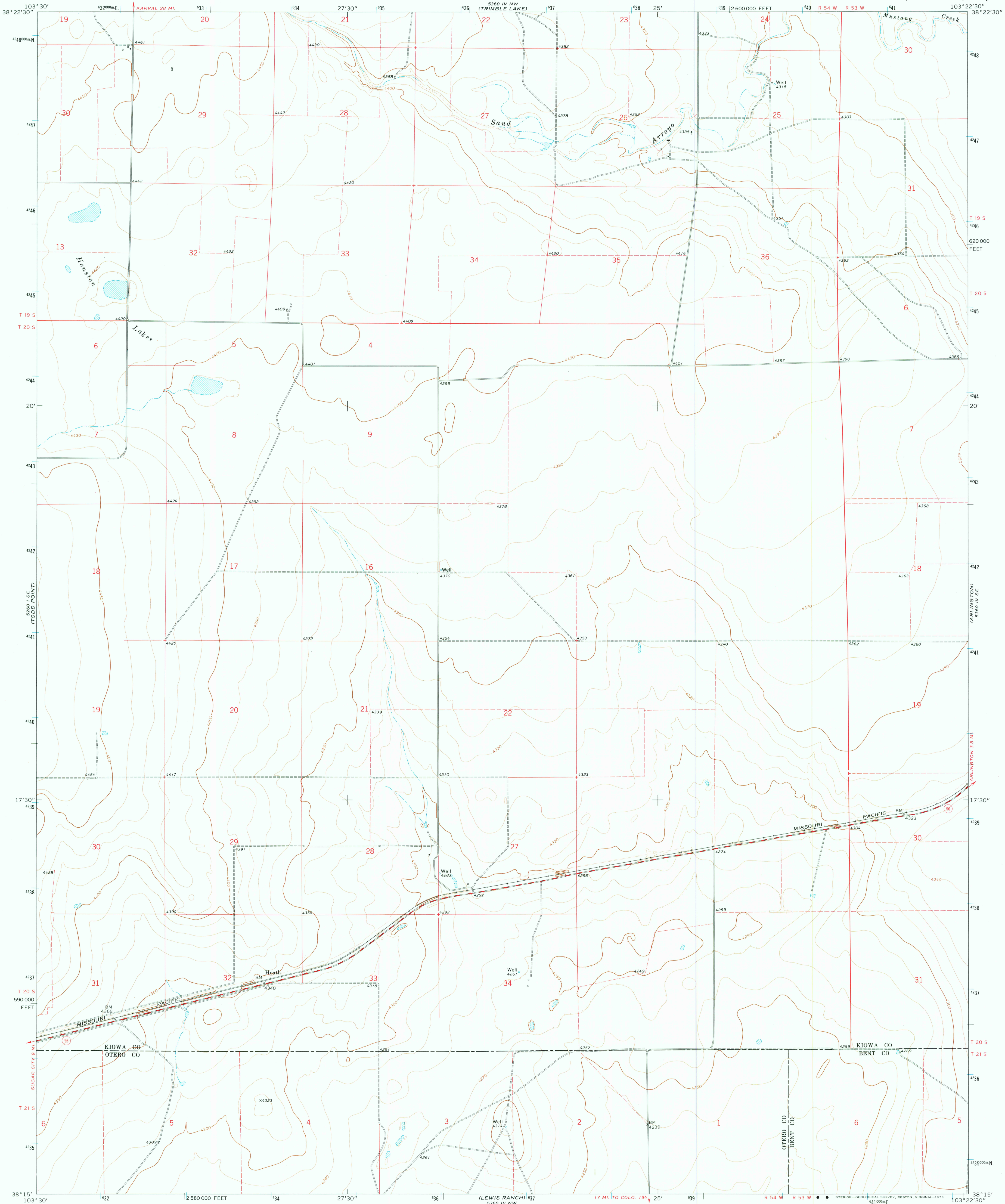
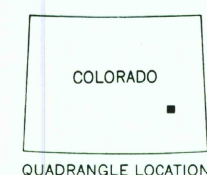
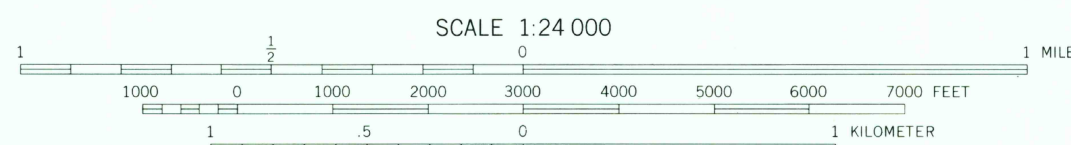
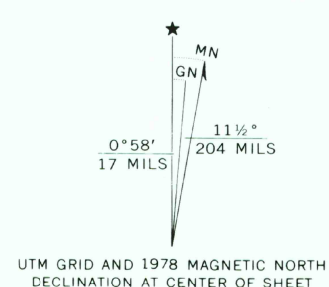


UNITED STATES
DEPARTMENT OF THE INTERIOR
GEOLOGICAL SURVEY

HOUSTON LAKES QUADRANGLE
COLORADO
7.5 MINUTE SERIES (TOPOGRAPHIC)



Maped, edited, and published by the Geological Survey
Control by USGS and NOS/NOAA
Topography by photogrammetric methods from aerial photographs
taken 1973. Field checked 1974. Map edited 1978
Projection and 10,000-foot grid ticks: Colorado
coordinate system, south zone (Lambert conformal conic)
1000-meter Universal Transverse Mercator grid ticks,
zone 13, shown in blue. 1927 North American datum
Fine red dashed lines indicate selected fence lines
Land lines are omitted in areas of extensive tract surveys



ROAD CLASSIFICATION
Primary highway, hard surface ————
Secondary highway, hard surface ————
Unimproved road ————
Interstate Route ————
U. S. Route ————
State Route ————

USGS HOUSTON LAKES, COLO.
Historical File N3815-W10322.5/7.5
Topographic Division 1978

AMS 5360 IV SW—SERIES V877

THIS MAP COMPLIES WITH NATIONAL MAP ACCURACY STANDARDS
FOR SALE BY U. S. GEOLOGICAL SURVEY, DENVER, COLORADO 80225, OR RESTON, VIRGINIA 22092
A FOLDER DESCRIBING TOPOGRAPHIC MAPS AND SYMBOLS IS AVAILABLE ON REQUEST

AUG 03 1978

1400