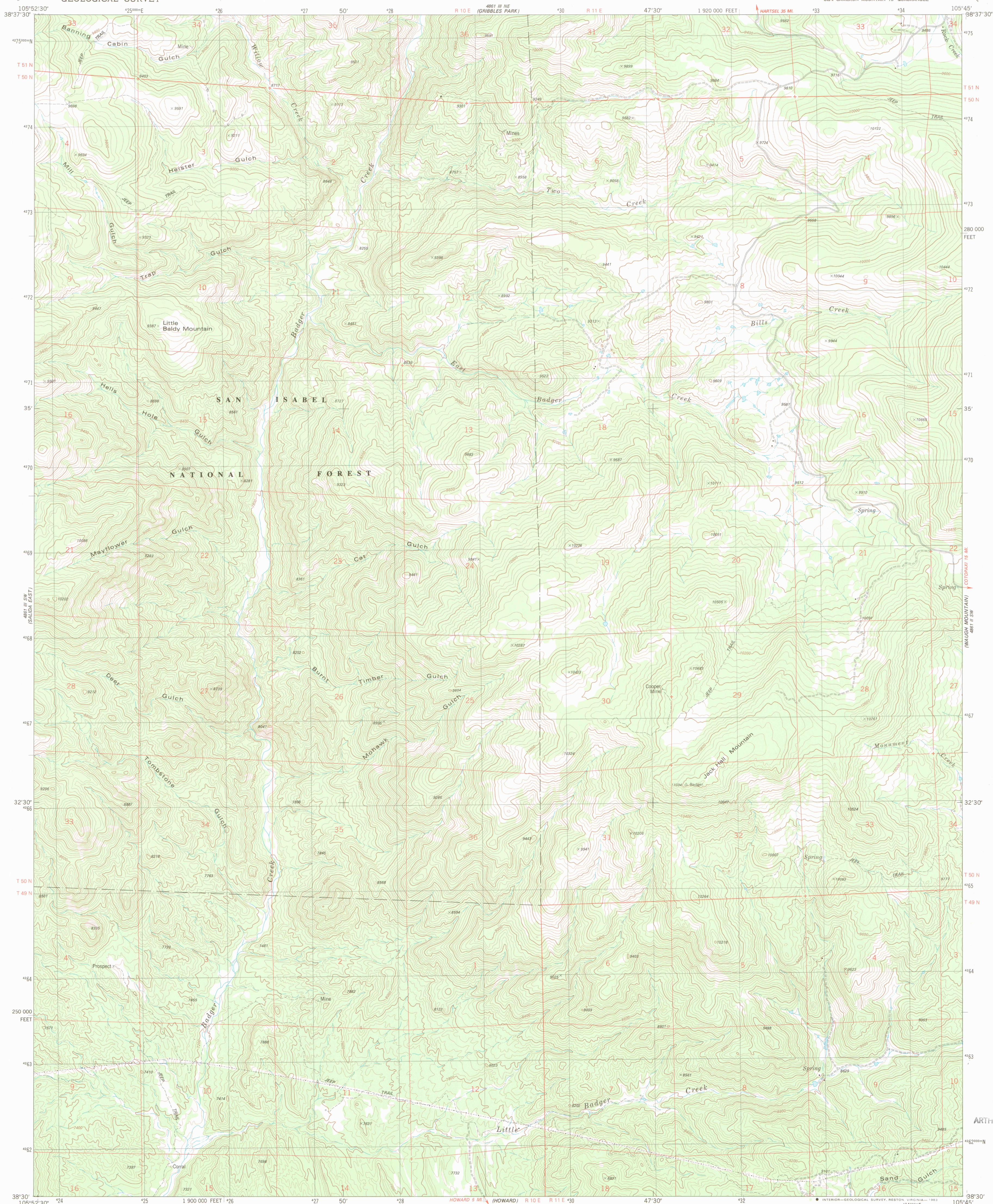


UNITED STATES
DEPARTMENT OF THE INTERIOR
GEOLOGICAL SURVEY

JACK HALL MOUNTAIN QUADRANGLE
COLORADO-FREMONT CO.
7.5 MINUTE SERIES (TOPOGRAPHIC)
SE/4 CAMERON MOUNTAIN 15' QUADRANGLE



Mapped, edited, and published by the Geological Survey

Control by USGS and NOS/NOAA

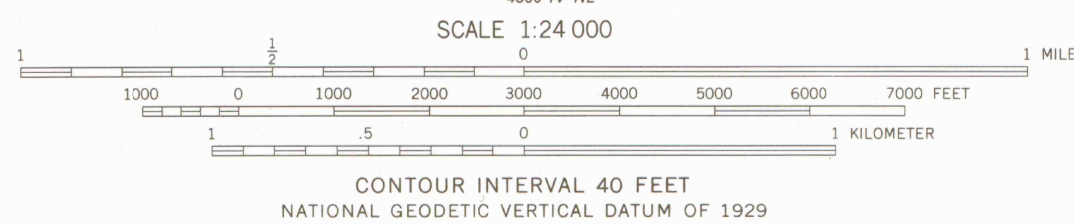
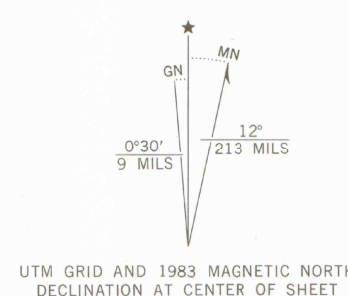
Topography by photogrammetric methods from aerial photographs taken 1975. Field checked 1976. Map edited 1983

Projection and 10,000-foot grid ticks: Colorado coordinate system, central zone (Lambert conformal conic) 1000-meter Universal Transverse Mercator grid, zone 13 1927 North American datum

To place on the predicted North American Datum 1983 move the projection lines 4 meters north and 50 meters east as shown by dashed corner ticks

Fine red dashed lines indicate selected fence lines

There may be private inholdings within the boundaries of the National or State reservations shown on this map



ROAD CLASSIFICATION	
Primary highway, hard surface	Light-duty road, hard or improved surface
Secondary highway, hard surface	Unimproved road
Interstate Route	U. S. Route
	State Route

JACK HALL MOUNTAIN, COLO.
SE/4 CAMERON MOUNTAIN 15' QUADRANGLE
N3830-W10545/7.5

1983

DMA 4861 III SE-SERIES V877

OFFICE COPY

THIS MAP COMPLIES WITH NATIONAL MAP ACCURACY STANDARDS
FOR SALE BY U. S. GEOLOGICAL SURVEY, DENVER, COLORADO 80225, OR RESTON, VIRGINIA 22092
A FOLDER DESCRIBING TOPOGRAPHIC MAPS AND SYMBOLS IS AVAILABLE ON REQUEST

APR 27 1984
MAP ROOM
ARTHUR LAKES LIBRARY

LIBRARY USE ONLY

C222
s24
U5