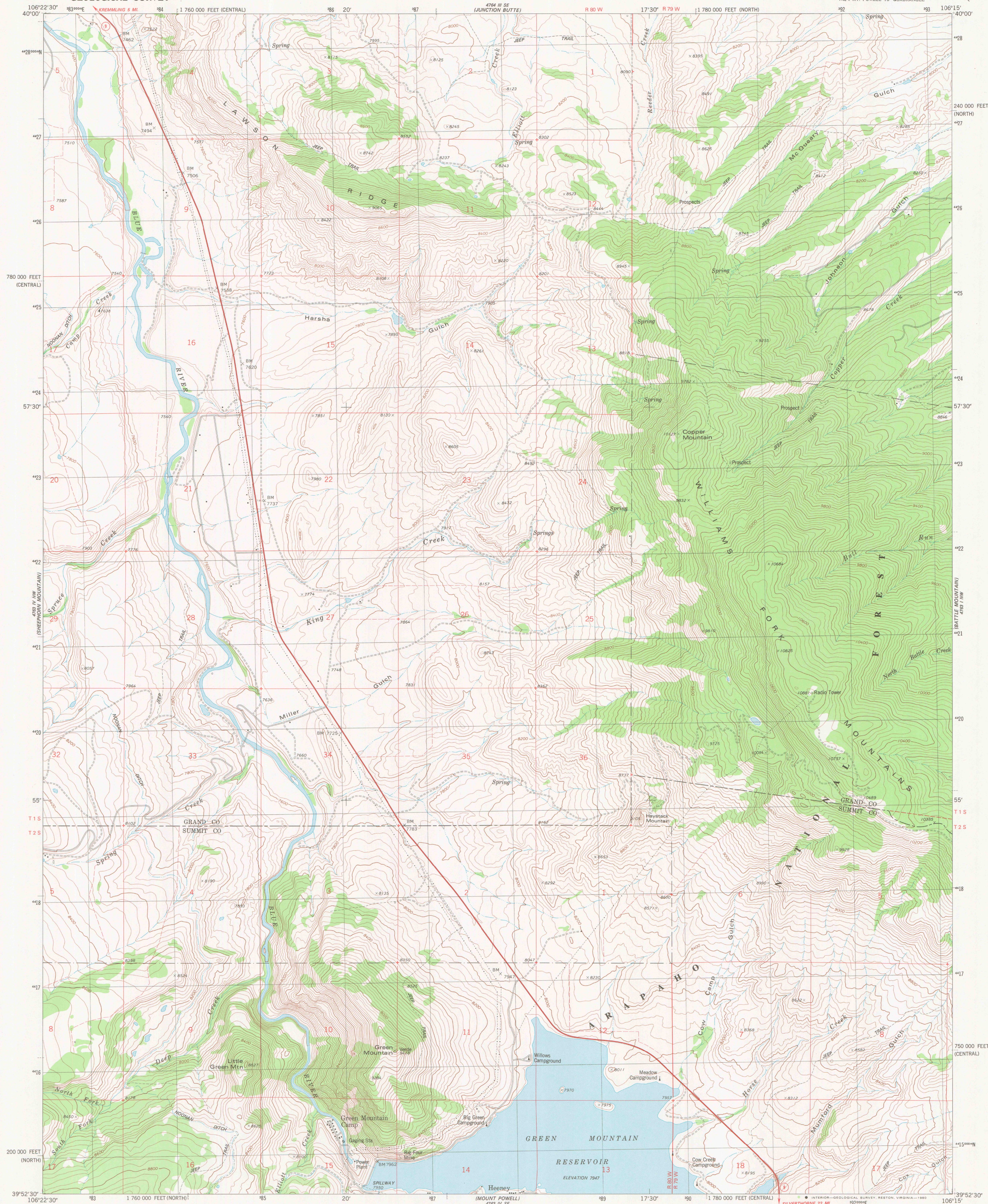
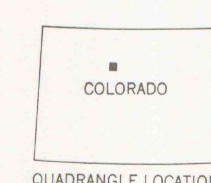
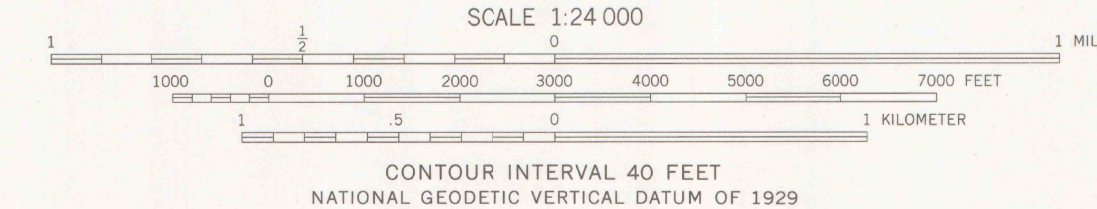
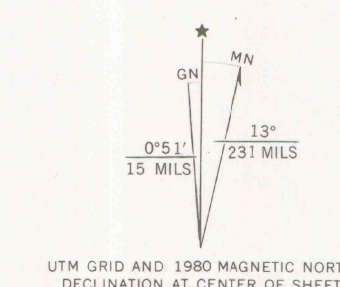


UNITED STATES  
DEPARTMENT OF THE INTERIOR  
GEOLOGICAL SURVEY

KING CREEK QUADRANGLE  
COLORADO  
7.5 MINUTE SERIES (TOPOGRAPHIC)



Mapped, edited, and published by the Geological Survey  
Control by USGS, NOS/NOAA, and U.S. Forest Service  
Topography by photogrammetric methods from aerial photographs  
taken 1975. Field checked 1976. Map edited 1980  
Projection: Colorado coordinate system, north zone  
(Lambert conformal conic)  
10,000-foot grid ticks based on Colorado coordinate  
system, north and central zones  
1000-meter Universal Transverse Mercator grid, zone 13  
1927 North American datum  
To place on the predicted North American Datum 1983  
move the projection lines 6 meters north and  
51 meters east as shown by dashed corner ticks  
Fine red dashed lines indicate selected fence lines  
Where omitted, land lines have not been established  
or are not shown because of insufficient data  
There may be private inholdings within the boundaries of the  
National or State reservations shown on this map



ROAD CLASSIFICATION  
Primary highway, hard surface  
Secondary highway, hard surface  
Unimproved road  
Interstate Route  
U.S. Route  
State Route

KING CREEK, COLO.  
NE 1/4 MT. POWELL 15' QUADRANGLE  
N3952.5-W10615.7.5  
1980

DMA 4763 IV NE—SERIES V877  
LIBRARY USE ONLY

OFFICE COPY  
FEB 12 1981  
MAP ROOM  
ARTHUR LAKES LIBRARY