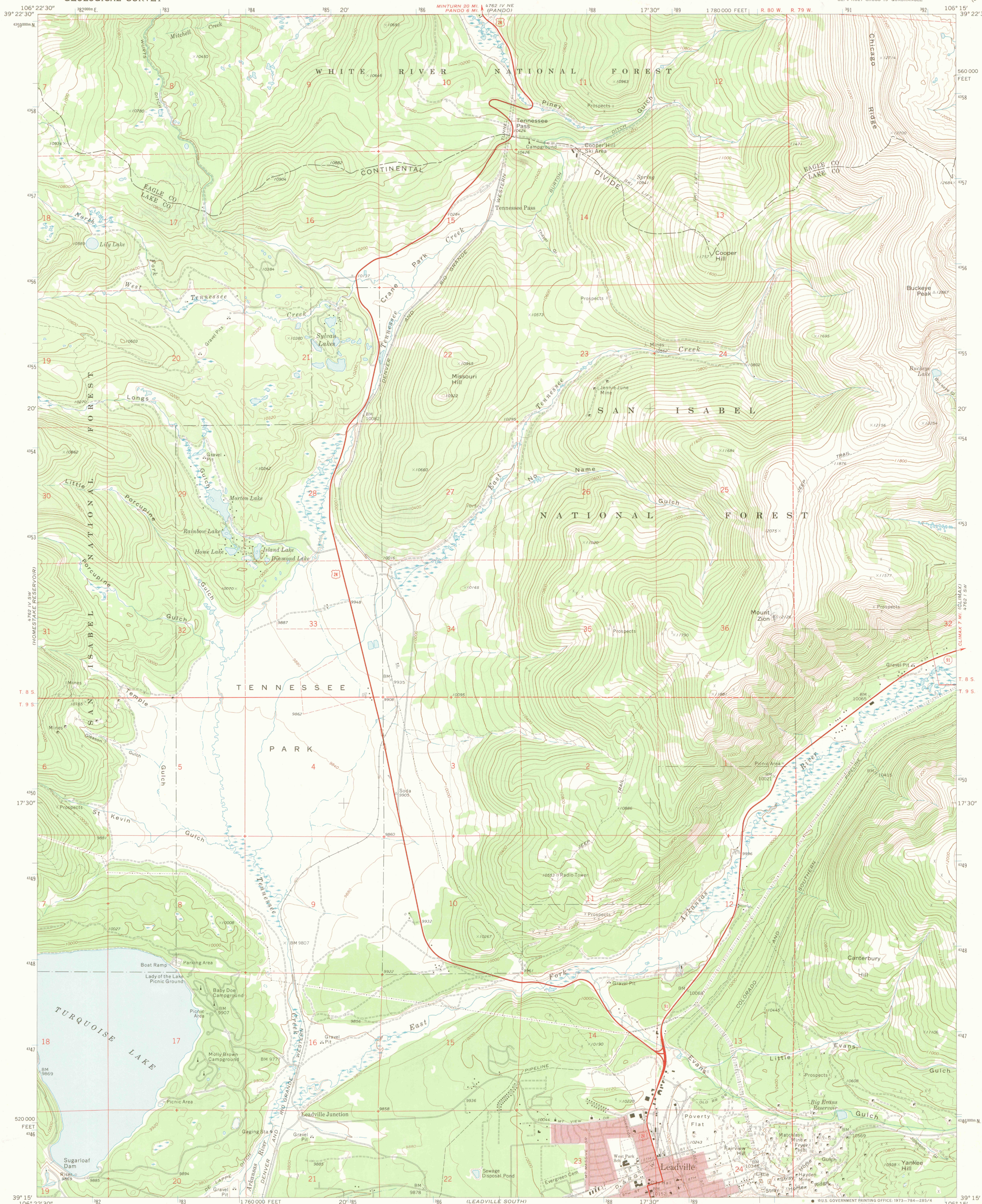


UNITED STATES
DEPARTMENT OF THE INTERIOR
GEOLOGICAL SURVEY

LEADVILLE NORTH QUADRANGLE
COLORADO
7.5 MINUTE SERIES (TOPOGRAPHIC)



Mapped, edited, and published by the Geological Survey

Control by USGS, USC&GS, and U. S. Bureau of Reclamation

Topography by photogrammetric methods from aerial photographs taken 1968. Field checked 1970

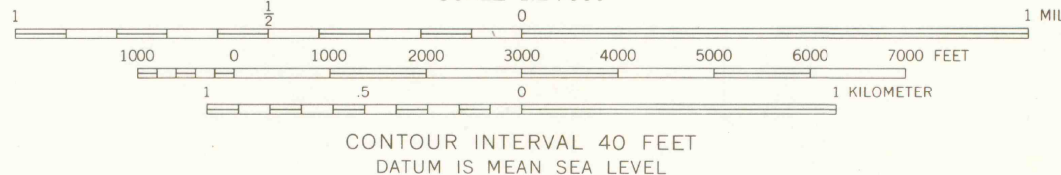
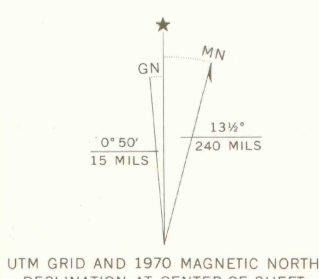
Polyconic projection. 1927 North American datum

10,000-foot grid based on Colorado coordinate system, central zone

1000-meter Universal Transverse Mercator grid ticks, zone 13, shown in blue

Fine red dashed lines indicate selected fence lines

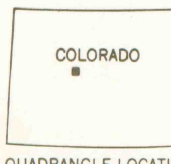
Where omitted, land lines have not been established or are not shown because of insufficient data



CONTOUR INTERVAL 40 FEET
DATUM IS MEAN SEA LEVEL

THIS MAP COMPLIES WITH NATIONAL MAP ACCURACY STANDARDS
FOR SALE BY U. S. GEOLOGICAL SURVEY, DENVER, COLORADO 80225, OR WASHINGTON, D. C. 20242
A FOLDER DESCRIBING TOPOGRAPHIC MAPS AND SYMBOLS IS AVAILABLE ON REQUEST

ROAD CLASSIFICATION	
Primary highway, hard surface	Light-duty road, hard or improved surface
Secondary highway, hard surface	Unimproved road
Interstate Route	U. S. Route
	State Route



U. S. GOVT
DOCUMENTS

LEADVILLE NORTH, COLO.
SE 1/4 HOLY CROSS 15' QUADRANGLE
N3915-W10615/7.5

1970

AMS 4762 IV SE—SERIES V877

ARTHUR LAKES LIBRARY
COLORADO SCHOOL OF MINES
AND MET. ENGINEERING

LIBRARY USE ONLY