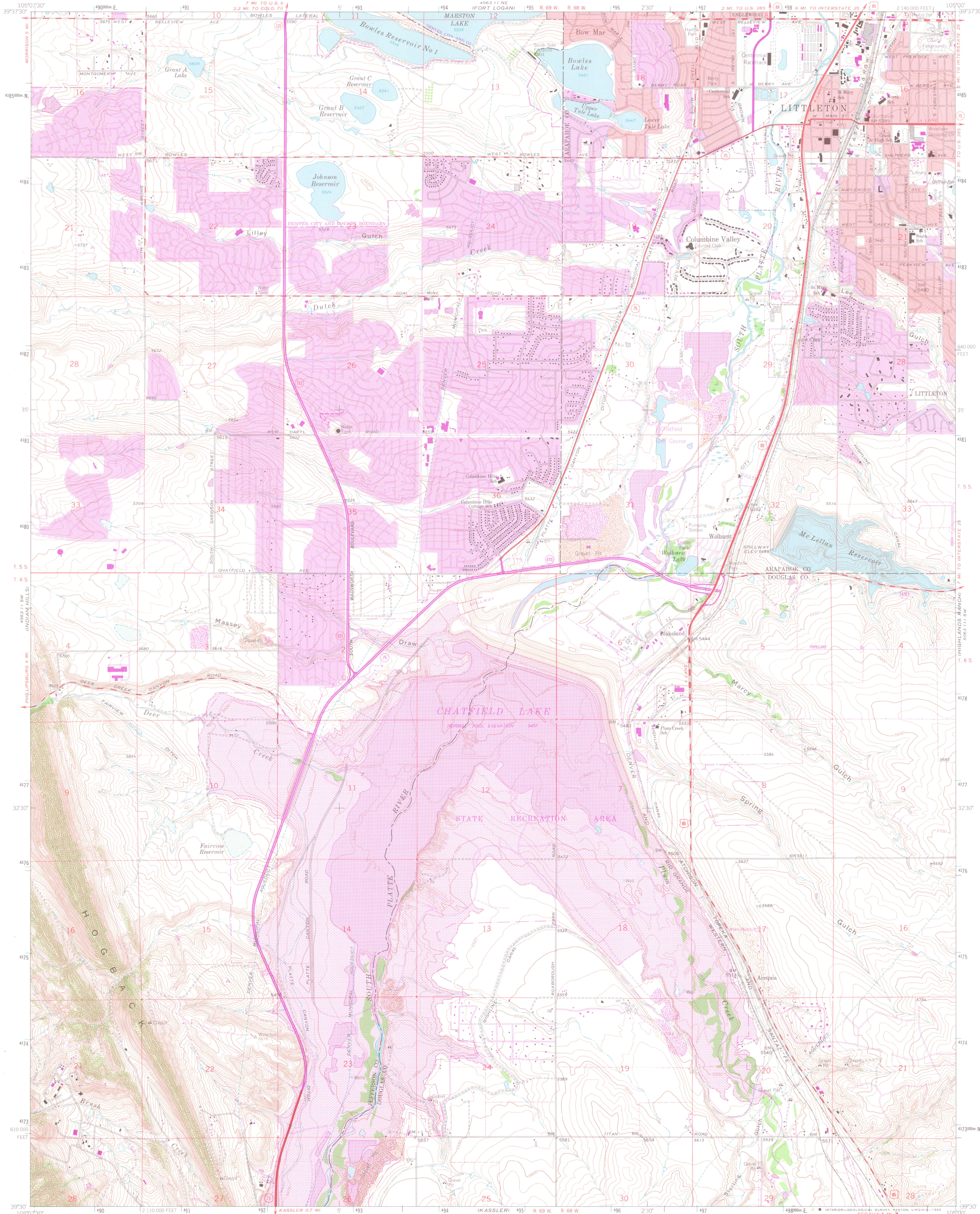


UNITED STATES
DEPARTMENT OF THE INTERIOR
GEOLOGICAL SURVEY

LITTLETON QUADRANGLE
COLORADO
7.5 MINUTE SERIES (TOPOGRAPHIC)



Maped, edited, and published by the Geological Survey

Control by USGS, NOS/NOAA and U.S. Bureau of Reclamation

Topography by photogrammetric methods from aerial photographs taken 1964. Field checked 1965. Supersedes map dated 1957

Polyconic projection. 1927 North American datum

10,000-foot grid based on Colorado coordinate system, central zone 13, shown in blue

1000-meter Universal Transverse Mercator grid ticks, zone 13, shown in blue

Red tint indicates areas in which only landmark buildings are shown

Fine red dashed lines indicate selected fence lines

There may be private inholdings within the boundaries of the National or State reservations shown on this map

To place on the predicted North American Datum 1983 move the projection lines 5 meters north and 48 meters east as shown by dashed corner ticks

