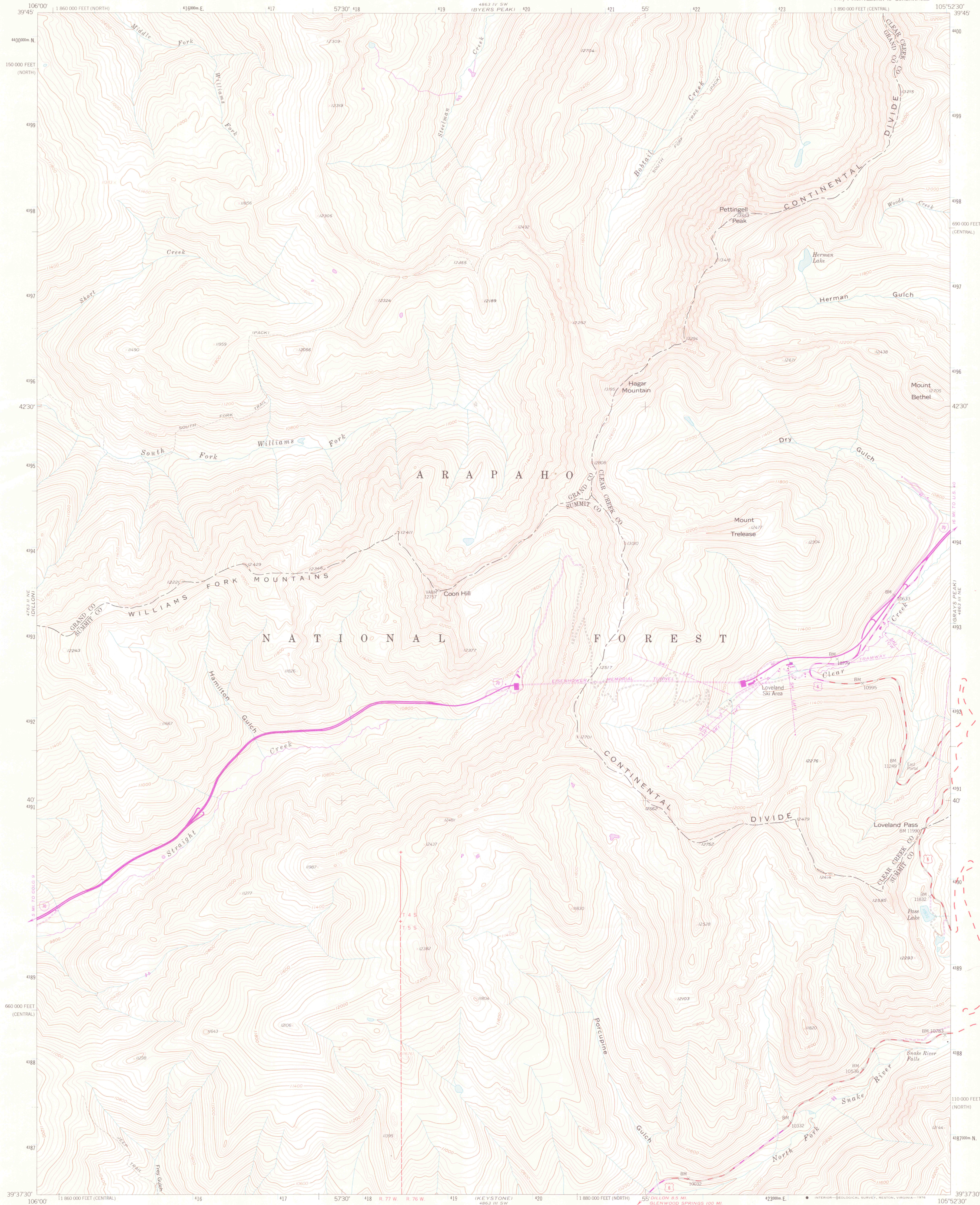
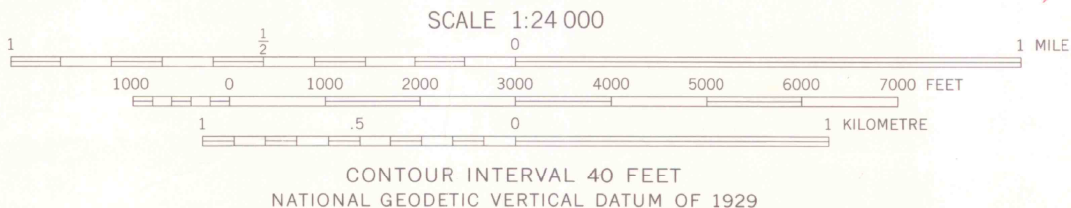


UNITED STATES
DEPARTMENT OF THE INTERIOR
GEOLOGICAL SURVEY

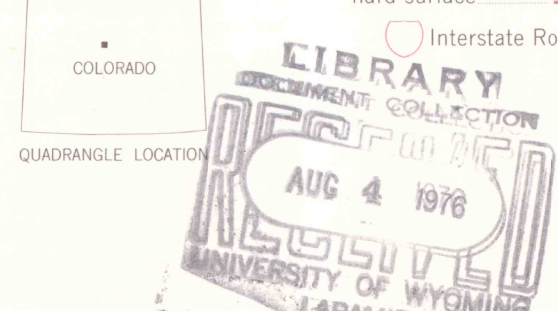
LOVELAND PASS QUADRANGLE
COLORADO
7.5 MINUTE SERIES (TOPOGRAPHIC)
NW/4 MONTEZUMA 15' QUADRANGLE



Mapped, edited, and published by the Geological Survey as part of the Department of the Interior program for the development of the Missouri River Basin. Control by USGS and NOS/NOAA. Topography from aerial photographs by photogrammetric methods. Aerial photographs taken 1953. Field check 1958. Polyconic projection. 1927 North American datum. 10,000-foot grid based on Colorado coordinate system, central and north zones. 1000-metre Universal Transverse Mercator grid ticks, zone 13, shown in blue. Dashed land lines indicate approximate locations. Certain land lines omitted because of insufficient data. Revisions shown in purple and recompilation of woodland areas compiled by the Geological Survey from aerial photographs taken 1974. This information not field checked.



ROAD CLASSIFICATION
Primary highway, hard surface
Secondary highway, hard surface
Unimproved road
Interstate Route
U. S. Route
State Route



LOVELAND PASS, COLO.
NW/4 MONTEZUMA 15' QUADRANGLE
N3937.5-W10552.5/7.5
1958
PHOTOREVISED 1974
AMS 4863 III NW-SERIES V877

637005
C1