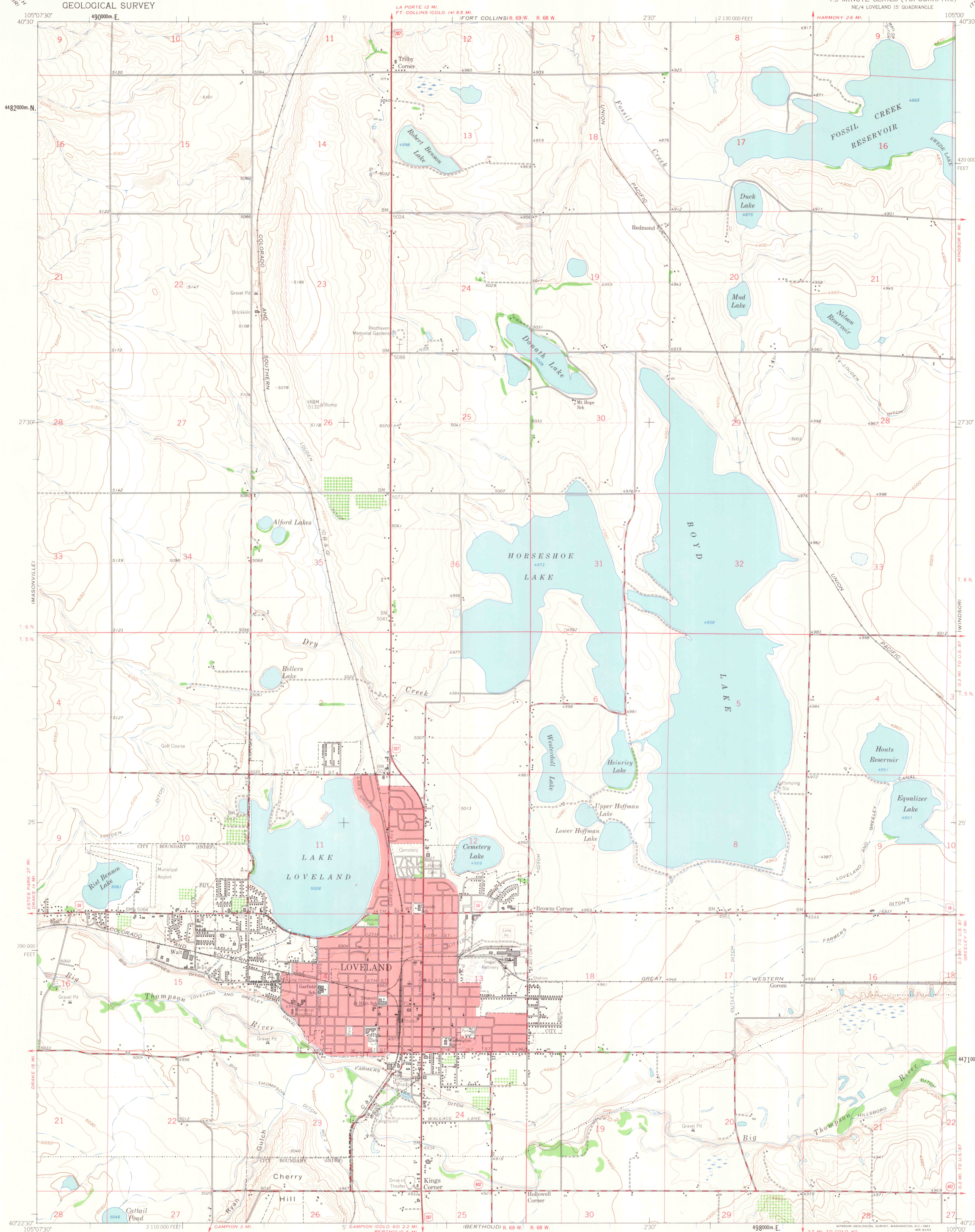


UNITED STATES
DEPARTMENT OF THE INTERIOR
GEOLOGICAL SURVEY

LOVELAND QUADRANGLE
COLORADO-LARIMER CO.
7.5 MINUTE SERIES (TOPOGRAPHIC)
NE/4 LOVELAND 15 QUADRANGLE



Maped, edited, and published by the Geological Survey

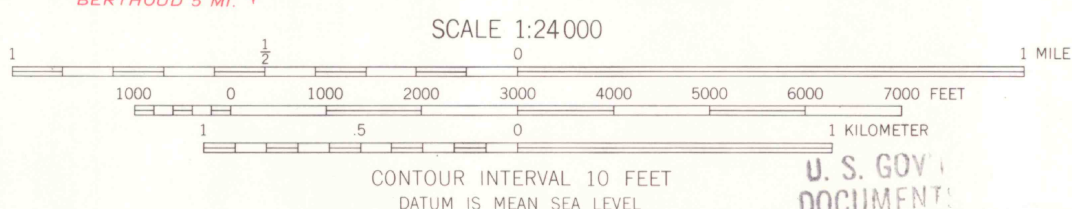
Control by USGS and USC&GS

Topography by photogrammetric methods from aerial photographs taken 1956 and 1958. Field checked 1960

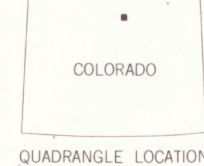
Polyconic projection. 1927 North American datum. 10,000-foot grid based on Colorado coordinate system, north zone 1000-meter Universal Transverse Mercator grid ticks, zone 13, shown in blue

Fine red dashed lines indicate selected fence and field lines where generally visible on aerial photographs. This information is unchecked

Red tint indicates area in which only landmark buildings are shown



ROAD CLASSIFICATION
Heavy-duty ——— Light-duty ———
Medium-duty ——— Unimproved dirt ———
U.S. Route —○— State Route —○—



LOVELAND, COLO.
NE/4 LOVELAND 15 QUADRANGLE
N4022.5-W10500.7.5

1962